

British Association of Dermatologists

# KNOW THE FACTS ABOUT COMMON SKIN CANCERS



## **WHERE** should I look?

Non-melanoma skin cancers can occur on any part of the body, but are most common on areas of skin that are most often exposed to the sun such as your head and neck (including lips and ears) and the backs of your hands. They can also appear where the skin has been damaged by X-rays, and on old scars, ulcers, burns and persistent wounds.

## **WHAT** should I look for?

Non-melanoma skin cancers vary greatly in what they look like. They tend to appear gradually on the skin, and slowly get bigger over time. They will not go away on their own without treatment.

## **WHAT** should I do if I find something?

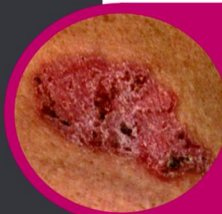
If you notice any of the warning signs listed on this leaflet, or if you are worried about any other changes taking place on your skin, even if they are not the same as those described here, you should tell your doctor as soon as possible.

If your doctor thinks you have a skin cancer or is not sure, they can refer you for free through the NHS to see a skin cancer specialist, usually a Consultant Dermatologist, who is an expert in diagnosing and treating skin cancer.

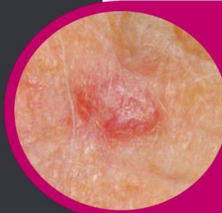
Some of the possible signs to look out for include:



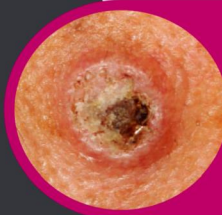
A scab or sore that won't heal. It may also bleed occasionally



A scaly or crusty patch of skin that looks red or inflamed



A flesh coloured, pearly lump that won't go away and appears to be growing in size



A lump on the skin which is getting bigger and that may be scabby



A growth with a pearly rim surrounding a central crater, a bit like an upturned volcano

  
**LA ROCHE-POSAY**  
LABORATOIRE DERMATOLOGIQUE  
Sole Sun Protection  
Brand Partner of

  
**SUN SAFETY PROGRAMME 2016**  
British Association  
of Dermatologists

**[www.bad.org.uk](http://www.bad.org.uk) | 020 7383 0266**  
Registered Charity No: 258474