

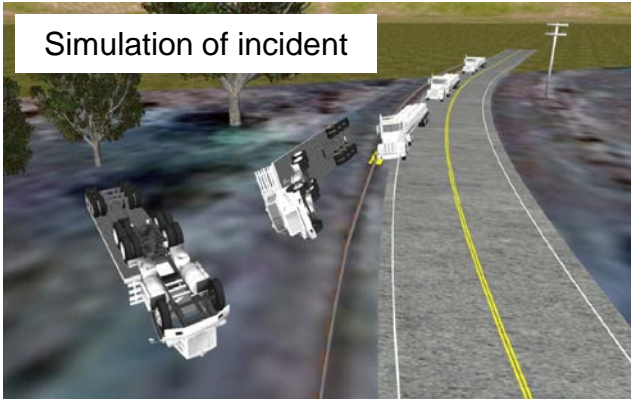
GLOBAL SAFETY ALERT

CONTRACT DRIVER FATALLY INJURED AFTER FALLING ASLEEP

INCIDENT DETAILS

A contracted driver was delivering bagged cement to a customer when he lost control of his truck, which then left the road and rolled over. The driver suffered fatal injuries as a result of the incident.

Simulation of incident



Final position of truck

KEY FINDINGS

- The evidence suggests the primary reason the driver lost control was because he fell asleep
- Although the driver had sufficient rest breaks, it's believed the combination of the warm weather and his recent lunch may have created the tiredness
- No brake or skid marks were found on the road and the GPS confirmed he was travelling under the speed limit
- No defects were identified on the truck and it had been maintained according to the required standards
- The driver had been trained, he was included in the third-party approval system and he was wearing his seatbelt
- Opportunities to strengthen journey planning and fatigue management procedures were identified

MANAGERS - KEY POINTS TO CHECK

- The CEMEX Global Fatigue Management requirements for drivers are in place and followed
- Driver training includes fatigue management procedures, including rest periods
- Effective journey planning processes are in place, particularly those involving long distances
- VFL 'drive along' activities are carried out to help influence safe driving behaviours
- All drivers fully understand our Driving Essentials and the requirements are strictly enforced

ALL PERSONNEL – ACTION TO TAKE

- Never drive tired!
- Always stop in a safe place to rest whenever you feel tired – you can put yourself and other road users at risk if you don't
- Plan your journey, especially long distances and know where safe rest places are located
- Eat lighter, nutritional meals and drink plenty of water to help avoid tiredness
- ALWAYS follow the CEMEX Driving Essentials!



Journey Planning



Fit & Alert



Remember