



MACHINERY GUARDING

GOOD AND BAD EXAMPLES





MACHINERY GUARDING



GUARDS NOT SECURED!





MACHINERY GUARDING

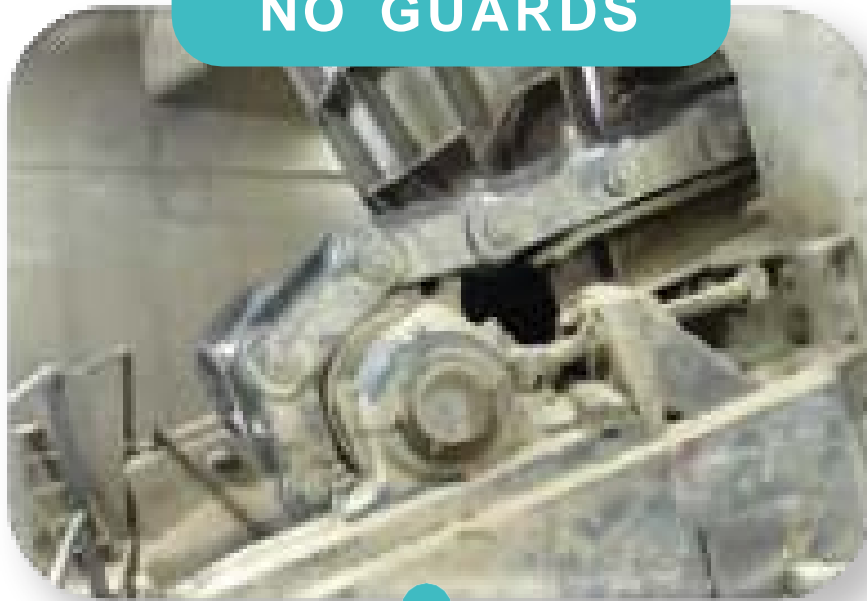


GUARDS SHOULD BE DESIGNED TO ENABLE LUBRICATION AND ADJUSTMENTS TO BE CARRIED OUT WITHOUT REMOVING GUARDS WHEREVER POSSIBLE



MACHINERY GUARDING

NO GUARDS

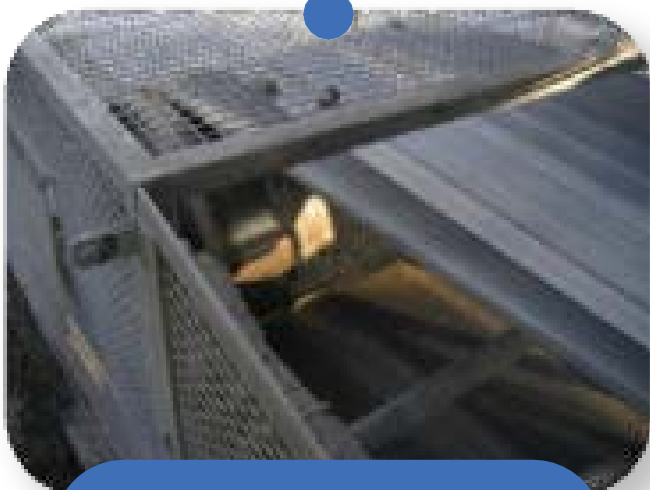


GUARDS NOT
SECURED

NEAR MISS /
HAZARD ALERT
REPORTING



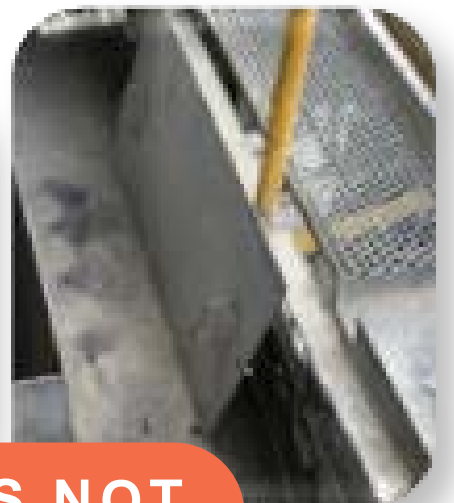
DAMAGED
GUARDING



INADEQUATE
GUARDING



GUARDS NOT
REPLACED





MACHINERY GUARDING

BAD EXAMPLES

