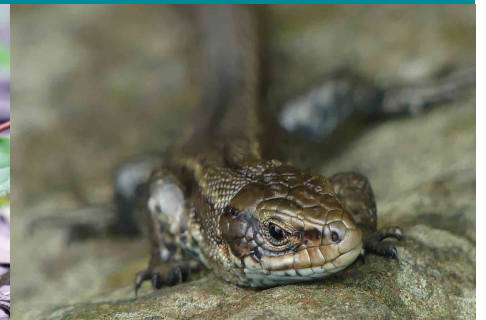


# Catching the moment...

## The MPA Nature Photo Competition 2021 *for all employees and contractors*



**In these times, it is more important than ever to acknowledge the power and positive impact of nature in all its diversity.**

**The fourth MPA Nature Photo Competition celebrates the unique role our members play in creating amazing habitats for wildlife and is open to all employees of MPA members and associates and contractors working on sites.**

Entries can be images of species (both fauna and flora) and habitats (including their landscape setting) found on operational quarries, partly or fully restored sites or any site plant.

The competition is open until **16 September 2021** and any photographs entered must have been taken between 1 January 2020 and 15 September 2021 to allow all the seasons and different wildlife to be captured.

Winners will be announced and images showcased at the MPA Quarries & Nature event in Autumn 2021. They will also be included in the Quarries & Nature calendar for 2022. Here are some from this year's.

Prizes of vouchers for photographic equipment will be awarded to first, second and third placed winners.



**You can enter a maximum of 5 images (between 1MB and 5MB each in size) which should be sent as separate emails direct to MPA at [naturephotos@mineralproducts.org](mailto:naturephotos@mineralproducts.org) – please read terms and conditions below.**

**For further information please contact Elizabeth Clements at MPA [elizabeth.clements@mineralproducts.org](mailto:elizabeth.clements@mineralproducts.org) or 07775 894 285**

### Terms & Conditions

Email your photos one at a time in JPEG format to [naturephotos@mineralproducts.org](mailto:naturephotos@mineralproducts.org), up to 5MB (1MB minimum), telling us where the photo/s was taken and when. You should also include a brief description to put the photo/s into context. Please keep large resolution copies of your photos, in case your entry is successful, for promotional and printing purposes.

Please tell us your full name, age, company, job role, location and a contact phone number with your submissions.

You must hold the copyright for or have the right to use the image/s. Please abide by your company's health & safety regulations and gain permission to photograph if required.

By submitting an entry you give MPA permission to use your image(s) in future publicity. The entrant will receive

acknowledgement where their entry is used.

Entries from professional photographers (those whose main income is their photography) are not eligible to enter. No photoshopped composites, faked or doctored images are permitted.

The judges' decision is final.