



Welcome to UK News 20th May 2021
your weekly update from around CEMEX UK

View UK News on: www.cemexuknews.co.uk

Follow us on twitter too: @CEMEX_UK



HEALTH & SAFETY

Rollover Awareness



The two main causes of rollovers are soft ground and speed around corners. The Health & Safety team have analysed the data for our region and produced two informative posters to promote rollover awareness.

Please use these posters on your sites to remind drivers of the risks. They can be found at the end of this

document and in the download section of the UK News website: www.cemexuknews.co.uk/downloads

A rollover video was created last year and can be accessed [here](#). Please re-watch with your teams.

As you may be aware, this week is the UN Global Road Safety Week (17th – 21st May) and it would be great if we can all support this. We have experienced several road traffic incidents this year, including a tragic fatality in the Philippines, and this is an opportunity to re-emphasise the importance of following our Driving Essentials and adopting safe driving behaviours at all times.

Safety Improvements in Asphalt



This week's safety spotlight is on the Asphalt business, who are currently working on adding extra safeguards on our bitumen tanks; they have telemetry that texts Jason Barker and the Site Manager if the bitumen temperature goes above or below set perimeters.

This has two benefits – it warns if the heating has gone off so they have time to investigate and it doesn't affect our ability to supply customers, and also provides early warning if the temperature starts to elevate. If bitumen elevates in temperature it can explode or set on fire.

At Preston they have built a Parking/Maintenance bay for the loading shovel at the side of the weigh bridge. This bay allows the shovel to be completely secluded from site traffic and can be worked on safely. It is also much safer for conducting the daily mobile plant checks. A mirror has been installed directly behind the bay for easier checking of lights functioning.

Guidance for On-Site Meetings



BEHAVIOURS THAT SAVE LIVES

With the next phase of the lifting of the lockdown measures, there can be a temptation to think things have returned to normal, however, we still need to maintain our guard if we are to look after ourselves and each other, especially with the news of further COVID variants.

This is particularly relevant to visitors to our operational sites, where an increase in numbers has been reported in recent days, some unannounced, despite the government's advice to minimise travel and to continue to work from home if you can.

With this in mind, everyone is asked to note the following guidance before arranging any site visits:

DO:

- Consider whether your visit is really necessary
- Confirm with the site management it is ok to visit
- Limit the number of people attending, most sites will not have the facilities to host more than 2 or 3 people
- Participate in the twice weekly lateral flow testing programme
- Check in via the NHS COVID-19 App on arrival
- Adhere to the site COVID requirements, CEMEX Protocols and the Four Key Behaviours that Save Lives
- Maintain the mask and move policy
- Meet outside where possible, where it is essential to meet indoors, observe maximum occupancy limits and ensure good ventilation...where possible, open the windows!
 - As a rough guide a meeting room for the maximum of 6 people needs to be over 60m² to comply with CEMEX guidelines, e.g. larger than 12m x 5m
- Limit your time on site

DON'T:

- Assume it's ok to visit and turn up unannounced
- Hot desk
- Relax the requirements for hands, face, space, fresh air...maintain 2 metres physical distancing and sanitise hands regularly
- Assume others will clean up and sanitise work areas after you

Think Thrombosis



During lockdown many people have been less active than usual.

Working from home or not being able to go out and about so much mean that we have been moving less and sitting more. These are the perfect conditions for thrombosis – or blood clots – to occur.

A thrombosis can happen to anyone and without warning or symptoms. They often go unrecognised or undiagnosed. Remember if in doubt check it out! Go to your doctor and get it checked.

To avoid the risks of thrombosis moving is key. Take a break from your desk regularly, do some stretches whilst you wait for the kettle to boil, go for a walk after work rather than just watching TV or gaming, do a home workout or commit to an exercise class! Keep the weight down and stay hydrated.



To find out more go to: <https://thrombosisuk.org>

There is a poster at the end of this document and in the download section of UK News website www.cemexuknews.co.uk/downloads which you can use on your site or at home!!



CUSTOMER CENTRICITY

Time for a Brew.....



Well done to the team up in Humberside for the Broadacre School pour last week.

Customer, Martin Standley, tweeted about the job commenting on the expertly placed 200m³ pour – he even had time for a brew!

1 Million Tonnes by Rail Already



It is fantastic to share with you that we have already achieved one million tonnes of aggregate moved by Rail from Dove Holes in 2021.

Massive thanks to the collaboration of the Dove Holes team and the operational staff at our depots. All movements were achieved safely and efficiently supporting our sustainability agenda and serving our customers safely.

Nick Watson, Supply Chain Planning Analyst, commented: "Given the UK picture this time last year it's no surprise we achieved the number a few days earlier this year. However, with last year being the best overall year on record for Rail, it is great to continue the trend of growing the capacity year on year."

Always Check you are Delivering to the Right Contract



All too frequently we are made aware of deliveries being made to the wrong site. Sometimes the error is noticed and the load can be re-directed to the correct site or returned, but on too many occasions the Technical department are asked to visit sites where remedial work is required as the material has been installed.

Supplying the wrong mix to site is by far the largest cause of product liability cost to our business in the removal of that material and the placement of the correct material. Removing hardened concrete is



extremely expensive and a rough rule of thumb is that it costs £1,000 for every 1m³ of material supplied.

Please always check the customer and delivery address before the load leaves the site and before unloading.

This and other topics are explored in the new Quality Matters alerts from the Technical team. Mike Higgins, National Technical Manager, commented: "The Quality & Product Technology team holds regular review sessions with the various businesses in the UK to make quality related improvements. Part of the most recent discussions were in relation to training, communicating learning points from issues such as complaints and quality near misses and sharing best practices in relation to product and service quality.

A regular communication containing these items will be circulated, please take time to address the content of each communication, even if it relates to a different business, there may well be points contained which translate across operations. There will also be short training sessions delivered virtually on key quality issues under the Quality Matters banner."

The first content for the Quality Matters initiative is QuA-1005. Please take the time to review and ensure the message is understood by relevant teams, there is potential for significant liability and impact to customer satisfaction when material is delivered to the wrong site. The Quality Matters document can be found at the end of this document or in the download section of the UK News website: www.cemexuknews.co.uk/downloads

If anyone has quality related content for the Quality Matters drive please contact Mike, Terry Mulcahy, Chris Clarke or any member of the Quality & Product Technology team.



PROFITABILITY

London River Freight Partnership Cuts CO₂ by 75%



CEMEX has agreed a new five-year partnership with Walsh, a leading provider of river, road and rail freight solutions in London.

This contract will see Walsh running barges on the River Thames to transport aggregates from CEMEX's wharf at Dagenham to its Readymix plant at Fulham with a 75% CO₂ saving compared to road transport. It equates to a saving of more than 5,000 lorry movements annually on London's roads. This further demonstrates CEMEX's Future In Action commitment to net zero CO₂.



Marine aggregates are processed at Dagenham and the site also receives limestone by sea from the company's Raynes quarry in North Wales. Both materials are used in the Fulham plant to produce concrete that is supplied into the London market.



David Alec Hart, CEMEX Supply Chain Director for UK and France, commented: “We are pleased to have agreed this new partnership with Walsh, who are perfectly placed to support us with the supply of materials into our Fulham site. We are always looking for ways to enhance the sustainability of our logistics operation, and the use of river freight supports our drive to be a responsible business by reducing congestion and air emissions in our great capital city.”

Lex Russell, Materials Director for CEMEX UK, added: “Our Fulham Readymix plant is a vital part of our London operation, so it is important that it receives a consistent and reliable flow of materials from our Dagenham Wharf. Using the Thames provides a congestion-free, sustainable route through the centre of London and maximising the opportunities for river freight was encouraged in the Greater London Authority’s strategic plan for the city.”

This contract will transport CEMEX materials on the Thames with one barge service completed every day. The use of a river barge to transport these materials takes trucks off the road, each loaded barge carries 400 tonnes which saves the equivalent of 20 HGV lorries travelling across the centre of London.

This contract with Walsh has been agreed as CEMEX prepares to invest in its Fulham Readymix site to ensure it can continue to meet demand for construction materials in the capital into the long-term. Opportunities to develop the partnership with Walsh further, are being explored.

New Loading Shovel for Aston



In January the main concreting plant in Birmingham, “Aston”, had a new Erie Strayer tilting mixer installed at a cost of approximately £800,000. CEMEX is investing to improve other areas at the site as well – one being to introduce a loading shovel.



“Due to its location and the road network the site was struggling at times to get the materials required for the day’s production,” explains Jim Wainwright, Ops Manager West Midlands. “Sometimes work would cancel and we would have to cancel at short notice which then had a knock-on effect to the haulier, and trucks that couldn’t be cancelled were waiting for up to two hours to tip. We have now installed a new bay where we can store sand and gravel to give us extra storage space and be more flexible on site. This has also had a massive benefit to the hauliers and has helped them run a more cost effective business.

As an addition, the loading shovel has a quick release bucket and came with a set of forks which has enabled us to off load fibres, admix etc. The site is more cost effective to run and has improved its capability for day to day running. This is a win, win, for both CEMEX and R. Adams and Sons (haulier).

All the team below have had a massive impact on further improving the site and the loading shovel:

- Josh Markhew, Plant Manager
- Joe Elles, Relief Manager
- Nigel Street, Senior Relief Manager
- Howard Reid, Company fitter

I would like to thank Christian Vale for his help and support for making this possible.”



Smart Innovation Calling



We are calling on all of you who have ideas and suggestions that can help us make a progress or reinvent our Company and construction. Put your ideas forward!



The three priority areas we are focused to explore are aiming to:

- **Achieve our climate action targets**
- **Address the needs of the cities of the future**
- **Radically improve efficiency and enable smart working**

Submit your ideas by 23rd July via the Smart Innovation Hub on SharePoint:

<https://cemex.sharepoint.com/sites/SmartInnovationHub>

Europump Wins ScanMarket Tender



Following the use of ScanMarket (Strategic Sourcing tool) Europump has been chosen to provide an annual service agreement for the inspection, repair and calibrations of fuel pump systems across UK Aggregates.

Thanks go to Aggregate Operations feedback working closely with Procurement, to help get this result... for any similar requirements across CEMEX, please reach out to Europump.

First Batch of China Liebherr Parts Heading to Oldbury Readymix



Liebherr parts from China are packed, labelled, casted and soon to leave Shanghai. This is the first of three UK sites to receive Readymix wear spares with Bramshill and now Stepney, London closely following next.

Many thanks go to the collaboration and efforts between Procurement (West Materials) and UK Operations team in making this happen.





Baby Birds at Bromsgrove



Whilst the offices at Bromsgrove have been a little quieter than usual during lockdown, the birds haven't been! Jim Wainwright, West Midlands Operations Manager, saw the baby Blue Tits hatch on the 'nestcam' set up in the bird box. The parents are working hard to feed the seven hungry beaks!



We asked Jim to give us some more information on his feathered friends.... "I put the bird box up last year and they started to make a nest but then I think they got spooked and moved out which was disappointing. This year I was hopeful that she would nest, every day she added to the nest and worked hard to make it her own. She laid 11 eggs altogether, but from what I can tell there are only eight that have hatched – still great news.

The box is on a pole just outside my office. I have a monitor as one of the pictures shows next to my PC screen. She is really busy at the moment constantly feeding them throughout the day. I am amazed how quickly they are developing, over the Bank Holiday weekend they grew feathers!"

Walk it out, Talk it out



The Halkyn team is excited to announce that they are going to be fund raising for the charity, Mind, in order to support mens mental health within the construction industry.



Phillipa O'Leary, Quarry Manager, explains: "Here at Halkyn quarry we want to encourage our employees to talk about their mental health.

The construction industry has the highest suicide rate out of all industries, and we want to make sure our employees feel supported, that they feel confident asking for help, and most importantly they feel like there's always someone to talk to no matter what the problem.

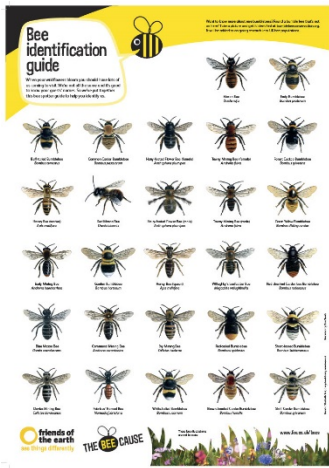
Each week, beginning 11th May, for the next six weeks we'll be taking time out from our working schedule and going on a boundary walk around the quarry. This will be an hour away from the work environment where people can connect to each other and speak about what is going on in their lives outside of work.

Please support us in whilst we walk and talk and build a better future for the construction industry!"

Donate on our JustGiving page: <https://www.justgiving.com/fundraising/halkynboundarywalk>



Help us Celebrate World Bee Day!



This week marks the day of the Bee. There are lots of different types of bees, most people know what a Bumble Bee or a Honey Bee looks like, but many don't realise there are many different types, some look like wasps and some look like flies.



This guide at the end of this document and in the download section of the UK News website: www.cemexuknews.co.uk/downloads shows you the variety of different bees: There are over 250 different types in the UK but this lists the most common ones!!

Good places to spot bees across our operations include grassland locations – Raynes, Halkyn, Southam, Kensworth, Denge and urban sites Jarrow and Stanwell (near Heathrow Airport).

Broadly speaking, bees are in trouble, they feed on sources of nectar from flowers. Changes in how we farm using chemicals to get rid of insect pests has also caused problems for our native bee population.

Some people don't realise that without our native bees to pollinate our food crops we wouldn't have almost all of our fruits and many vegetables. Gardens have become less friendly to bees too, we can help this by adding native flowers to our garden and cut the grass less, allowing grassland flowers a chance to flower and set seed – you could join **#NoMowMay** and see what flowers pop up in your grass.

Feel free to spot bees on your site and take a photo to send into Sean Cassidy: sean.cassidy@cemex.com He'd love to see what different sorts of bees we have on our sites.

Spotting bees and thinking about what you can do to help them is a part all of us can play in helping bees and nature around us. A child friendly Bumble Bee guide can be found here:

[https://www.bumblebeeconservation.org/assets/documents/BBCT_Kids_ID_sheet_\(big_8\).pdf](https://www.bumblebeeconservation.org/assets/documents/BBCT_Kids_ID_sheet_(big_8).pdf)

Buildings Hard Problem – Making Concrete Green....



Today we use more concrete than any other substance – apart from water. That means it accounts for about 8% of the carbon dioxide (CO₂) we emit into the atmosphere. That is substantially more than the aviation industry, which makes up about 2.5% of emissions. The challenge for the industry is how to produce our materials sustainably.



The BBC produced a great article in tandem with the Global Cement and Concrete Association about the recent innovations and continuing challenges of making our industry sustainable in a way which all countries can manage.



Did you know that China made more concrete between 2011 and 2013 than the US did in the whole of the 20th Century? Around 90% of future cement production will take place outside of the wealthy OECD countries so the new technology has to be affordable to all.

CEMEX's Vertua® concrete range was mentioned as well as other innovations from players in our industry such as Calix and Heidelberg. The article is well worth a read, here is the link:

<https://www.bbc.co.uk/news/business-56716859>

Photo from Getty images shows the Pantheon in Rome – almost 2,000 years old and built from concrete.



EMPLOYEES

25 Years for Derek Marchant



Huge congratulations from everyone at the plant to Derek Marchant, Plant Manager at Peterlee mortar plant in the North East.

Derek completed 25 years service with the company on 20th May. Thank you for all your dedication and hard work over the years Derek.

Carly Flitton gets a Distinction



Well done to Carly Flitton who recently achieved a Distinction in her Level 3 Customer Service Training NVQ. She has had to contend with working from home and putting in many hours out of her own time to achieve this high standard.

Carl Milton commented: "What an achievement despite all the challenges we have had. You have certainly led the group in this pilot of the training."

Pearson, the awarding body, were also impressed and commented: "It was a great result, and to achieve a Distinction when this standard is particularly challenging is amazing."

Long Service Congratulations



Well done and thank you to the following people for reaching a long service milestone this week. We really appreciate all your contributions and hard work over the years:

- Owen Williams – 15 years – Lead Driver – Halkyn
- Iain Beckwith – 25 years – Multi Skilled Operative – Dove Holes



New Sustainability focused CPD Course



Well done to the Technical team who have launched a new, RIBA-accredited CPD course for architects and engineers called 'Concrete – Focus on Sustainability'

This CPD tackles the key issues facing specifiers who aim to accomplish their sustainability goals while continuing to specify safely and effectively. The presentation will cover the current conversation, the various initiatives from the industry that aim to tackle climate change, and the technologies available within construction materials that are designed specifically to aid these goals. By the end of the CPD participants should have a greater understanding of:

- Initiatives geared towards sustainability in specification
- Material technologies available to reduced embodied carbon
- Comparisons between available material options based on structural requirement
- Examples of construction projects completed with sustainable materials
- How to specify sustainable materials
- Relevant opportunities for using alternative materials to meet sustainability objectives
- Advantages/disadvantages of differing concrete components
- How to interrogate relevant standards for further detailed guidance

Mat Saunders, National Product Support & CPD Co-Ordinator, commented: "The conversation around sustainability is currently at the forefront of the minds of everyone globally, and as an organisation we have a responsibility to contribute to that discourse in a positive manner.

This is why we felt that educating industry professionals on what cement and concrete technology can do to help specifiers, clients and contractors meet their sustainability targets, while still using concrete to build safe, efficient, beautiful structures that we all live and work in, was paramount. Even at this early stage the course has been wildly popular, and we anticipate a significant uptake over the rest of 2021 and beyond."

CEMEX Cycle To Work Scheme – Last Chance!



Are you considering a healthier, more sustainable way of travelling? If so, then CEMEX Cycle to Work scheme may be just what you are looking for! The scheme has been extended by a week and now closes on Friday 21st May.

What is a tax free bike (Cycle to Work) scheme?

Cycle to work is a government initiative that was introduced in 2001 to encourage more people to commute to and from work by bike, enabling people to make healthier choices and reducing the UK's carbon footprint.

The initiative also allows you to make huge Tax and National Insurance savings on the cost of a new bike and safety accessories. These savings are achieved via salary sacrifice which is managed by your employer and lets you spread the cost to make payments more convenient!



Where can I redeem my Letter of Collection?

Cycle2Work is supported by a wide range of specialist bike dealers, catering to everyone regardless of their needs, budget, location or journey to work! This includes:

cycle2work

halfords

**cycle
republic**

tredz

**Independent
Bike Shops**

What's more, you can also benefit from regular discount offers at Halfords, Tredz or Cycle Republic – saving you even more on your perfect bike and accessories!

You can apply online by going to www.cemexlifestyle.co.uk and search for Cycle to Work, or by calling **01908 303498**.

Internal Vacancies

IVC Ref	Position	Company	Location	Closing date
115-05-2021	Operative	Aggregates	Ryall	21/05/2021
116-05-2021	Engineering Project Manager	UK Engineering	Any Hub Office	28/05/2021
117-05-2021	Bulk Tanker Driver (Nights)	Cement	Rugby Plant	27/05/2021
118-05-2021	Technical Systems Administrator	Quality and Product Development, Materials West Europe	Rugby	25/05/2021
119-05-2021	Technical Sales Support	Readymix	Rugby Office	21/05/2021
120-05-2021	Customer Service Agent	Building Products	Rugby Office	21/05/2021
121-05-2021	Lead Driver	Supply Chain Logistics	Angerstein Wharf	04/06/2021
122-05-2021	LGV Driver	Supply Chain Logistics	Dagenham	04/06/2021

For further details on other roles and a full listing of other vacancies, together with information on how to apply, please log on to CEMEX Shift > My Services > Internal Vacancies>New IVCs.



We would love to hear from you for the next edition

To send us a story: either click on 'submit a story' on the UK News website or email gb-communicationsandpublicaffairs@cemex.com

If you can, please include a photo too (taken in super fine landscape setting and saved as a jpeg.) Thank you.

Employee Assistance Programme

Free, confidential support and counselling available for all employees

If you're worried about a work, family or personal issue then the Employee Assistance Programme can help, 24/7.

Support with everything from consumer rights to bereavement, depression & anxiety to childcare.

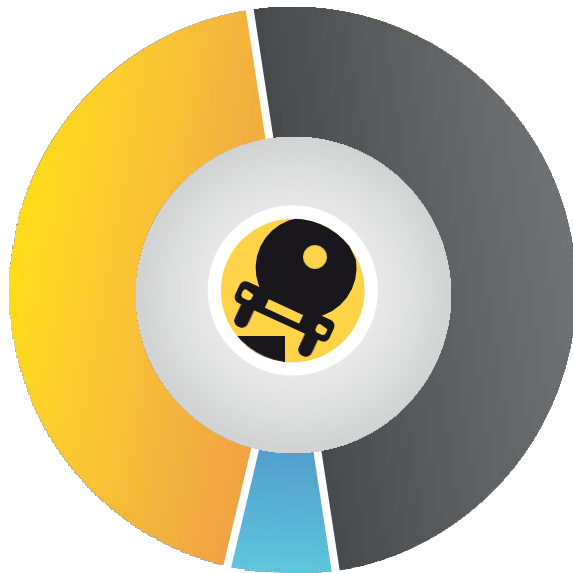
Visit www.lifestyle-support.co.uk (username: cemex / password: cemex) or call **0808 1682143**





VEHICLE ROLLOVERS

Recent analysis of vehicle rollovers has identified the main 2 causes are Soft Ground and Speed/Cornering.



SPEED / CORNERS
44%

MECHANICAL / DEFLECT
6%

SOFT GROUND
50%



Safety Checks

Carry out your vehicle checks before driving and make sure your load is stable and secure.



Journey Planning

Assess the risks and plan your journey to use the safest route.



Seatbelts Save Lives

Wear your seatbelts and make sure any passengers do as well.



Watch our Speed

Keep below the limit and adjust your speed to suit road and weather conditions.



Keep a Safe Distance

Leave enough space between you and the vehicle in front so you can stop safely.



Fit and Alert

Ensure you are fit to drive: hydrated, well rested, and free from the influence of alcohol or drugs.



Do not Overtake

Unless it is safe and legal to do so.



Mobile Phone

Use of a hand-held mobile phone whilst driving is prohibited.



Other Road Users

Stay alert to other road users, particularly motorcyclists, cyclists and pedestrians.



Respect the Law and other Drivers

Know and follow the road rules and be courteous to other drivers.



Site Safety

Check for hazards when on site, be highly visible and assess the risks before unloading.



Remember

- Your family depends on you. So drive to arrive safely at all times!

Please drive to the road and site conditions

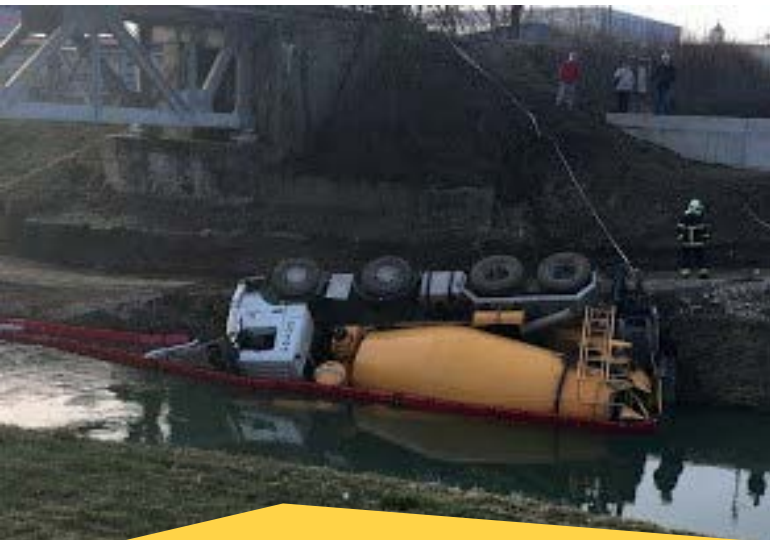


STOP THINK ACT



VEHICLE ROLLOVERS

Recent analysis of vehicle rollovers has identified the main 2 causes are Soft Ground and Speed/Cornering.



Seatbelts Save Lives

Wear your seatbelt and make sure any passengers do as well



STOP THINK ACT

THINK THROMBOSIS



A blood clot can occur in anyone and without any warning signs or symptoms. The most common occur in the limbs (called a DVT), or in the lungs (PE) combined this is known as VTE. Too often they can go unrecognised and undiagnosed. The following symptoms are indicative of DVT or PE but are not exclusive nor exhaustive. Remember if in doubt get checked out!

Deep Vein Thrombosis (DVT)

- Unexplained pain can be the only symptom
- Swelling, including the ankle or foot
- Redness or noticeable discolouration
- Warmth

Pulmonary Embolism (PE)

- Unexplained shortness of breath
- Rapid breathing
- Chest pain (may be worse upon deep breath)
- Rapid heart rate
- Light headedness or passing out

The restrictions of lockdown, and the switch to working remotely for many of us, may mean that we are being less active, which is a risk factor for thrombosis.

It's important to be aware of the risk of thrombosis and do what you can to prevent it – in particular, keep hydrated and stay active!



Tips for getting more active

- Take breaks throughout your working day. Set reminders on your phone or in your calendar.
- Get some daily exercise. Go for a walk or jog before you start work or, do a home workout at lunchtime.
- Do some exercises while you're waiting for the kettle to boil.
- Take a short break and get some chores done e.g. watering the plants
- Take five minutes at the end of meetings to get up and stretch.
- Do something active in the evening rather than sitting in front of the TV or gaming. A walk after dinner, for example.
- Make a commitment – booking online for a virtual workout or outdoor fitness class.

For more information, visit: <https://thrombosisuk.org/>

Graphics and information taken from [BUPA](#) and [Thrombosis UK](#).



DELIVERY TO THE RIGHT CONTRACT

All too frequently we are made aware of deliveries being made to the wrong site. Sometimes the error is noticed, and the load can be re-directed to the correct site or returned, but on too many occasions the Technical Department are asked to visit sites where remedial work is required, as the material has been installed. The examples listed below all occurred within the last 6 months.

Supplying the wrong mix to site is by far the largest cause of product liability cost to our business in the removal of that material and the placement of the correct material. Removing hardened concrete is extremely expensive and a rough rule of thumb is that it costs £1000 for every 1m³ of material supplied.

Example 1 – Re-directed - out of specification

BCM Construction Ltd placed an 80m³ pour, on load 8 the driver was issued a ticket for a delivery addressed to O'Keefe Construction but the load on board was in fact the BCM load. The driver duly delivered the load to O'Keefe but was intercepted before he discharged at the site.

The driver was then instructed to deliver the load back to BCM; however, the concrete was circa 2 hours old at point of delivery.

The Technical Manager was not contacted regarding redirecting the load and BCM chose not to reject it, resulting in potentially nonconforming material being used in the structure.

Example 2 – Delivered - installed with incorrect admixture

We had been delivering to 2 pours running concurrently, 169m³ for Amodeo Ltd and 20m³ to Holbrook Homes. The driver had not delivered to either site, but it is believed the larger pour had been discussed and the assumption was made that this was where the load was for. The delivery ticket was not checked either by the driver or on site, and the load was poured into the floor slab.

Fortunately, both mixes were RC28/35 although, due to the customer specification and preference, Amadeo had requested a low dosage of WRA to reduce retardation for power floating, the mix placed had the standard dose.

The variation in admixture dosage rates could have made power floating of the concrete slab very difficult and time consuming for the customer, this could have incurred large additional costs, which the customer would be looking to CEMEX to reimburse

Example 3 – Delivered - installed wrong aggregate size and additional parameters

A Driver was loaded with C28/35 Pump 10mm S4 and WRA, the 3rd load meant for Creagh Concrete Products Ltd. The driver failed to check the delivery ticket and wrongly delivered the material to Keller Ltd. where the concrete was used in the piling operation. Keller Ltd had ordered a C28/35 Pump 20mm S4 DC-2 with 55% Fines with a superplasticizer.

Although both materials had the same characteristic strength requirement, the additional parameters of each mix were markedly different, as would be the performance characteristics during placement.

Again, it was fortunate that the wrongly delivered material complied with the customers' requirements, and also the additional DC-2 parameters.

LEARNING POINTS

In all of the examples listed we have been lucky. On each occasion we were fortunate that the material we actually delivered had similar strength and other characteristics, otherwise these could have been very costly mistakes.

The examples are also just those that have been recorded, how often does this happen without being highlighted.....

Before we send a delivery out, we must.....

- Ensure the correct material is loaded on to the vehicle
- Ensure the correct delivery details are printed legibly on the delivery ticket
- Ensure the driver of the vehicle is aware of the customer and delivery address

Delivery drivers must

- Ensure they have checked the material is loading is completed
- Ensure they are fully aware of the customer and address they are required to deliver to

PLEASE ALWAYS CHECK THE CUSTOMER AND DELIVERY ADDRESS BEFORE THE LOAD LEAVES THE SITE AND ADDITIONALLY BEFORE UNLOADING



Bee identification guide

When your wildflowers bloom you should have lots of us coming to visit. We're not all the same and it's good to know your guests' names. So we've put together this bee spotter guide to help you identify us.



Want to know more about rare bumblebees? Found a bumble bee that's not on here? Take a picture and get it identified at bumblebeeconservation.org. It will be added to on-going research into UK bee populations.



Mason Bee
Osmia rufa



Early Bumblebee
Bombus pratorum



Buff-tailed Bumblebee
Bombus terrestris



Common Carder Bumblebee
Bombus pascuorum



Hairy-footed Flower Bee (female)
Anthophora plumipes



Tawny Mining Bee (female)
Andrena fulva



Forest Cuckoo Bumblebee
Bombus sylvestris



Honey Bee (worker)
Apis mellifera



Red Mason Bee
Osmia bicornis



Hairy-footed Flower Bee (male)
Anthophora plumipes



Tawny Mining Bee (male)
Andrena fulva



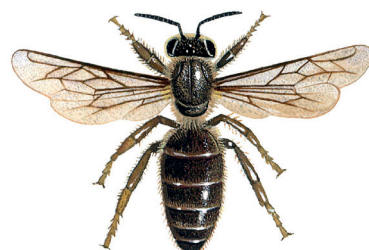
Great Yellow Bumblebee
Bombus distinguendus



Early Mining Bee
Andrena haemorrhoa



Garden Bumblebee
Bombus hortorum



Honey Bee (queen)
Apis mellifera



Willughby's Leafcutter Bee
Megachile willughbiella



Red-shanked Carder-bee Bumblebee
Bombus rudarius



Blue Mason Bee
Osmia caerulea



Communal Mining Bee
Andrena carantonica



Ivy Mining Bee
Colletes hederae



Red-tailed Bumblebee
Bombus lapidarius



Short-haired Bumblebee
Bombus subterraneus



Davies Mining Bee
Colletes daviesanus



Fabricius' Nomad Bee
Nomada fabriciana



White-tailed Bumblebee
Bombus lucorum



Brown-banded Carder Bumblebee
Bombus humilis



Shrill Carder Bumblebee
Bombus sylvarum

Illustrations by Chris Shields

Friends of the Earth Trust, a registered charity. www.foe.co.uk

These bee illustrations are not to scale

www.foe.co.uk/bees

