

SAFETY ALERT

UK SA08/2021 – 16.07.21

Display Until
27/08/2021



CONTRACTOR TRIPS & FALLS

DETAILS OF THE INCIDENT

The injured person, a Supervisor from a contract cleaning company, was assisting a new cleaner on their first day. When making their way to the bottom site welfare facilities, they had to cross an area with no defined walkway apart from designated entry / exit points, marked by door frames. When traversing this zone the Supervisor needed to pass a parked forklift truck. When doing so, she attempted to step over the forks and tripped, falling to her hands and injuring her knees.

KEY FINDINGS

- The Supervisor had an induction that day and a comprehensive site tour.
- The pedestrian access point by the welfare facilities was changed due to a recent replacement of the toilet block.
- When this change was made, no consideration was given to where the forklift trucks park.
- The area where there isn't a walkway is quite busy with mobile plant movements.
- The route across the open area was not obvious and is quite long.
- As part of the induction the Supervisor was instructed not to walk behind forklift trucks – this is due to reduced visibility when they are in operation.
- The Supervisor's vision was obscured by steamed up safety glasses due to the high ambient temperatures that day.



HOW COULD THIS HAVE BEEN AVOIDED?

- Carry out a Management of Change review when changing processes or equipment to capture any issues that might arise.
- Mobile plant should have designated parking that does not obscure pedestrian routes.

KEY REVIEW POINTS

- Review the use or the Management of Change process
- Provide a better / dedicated parking area for mobile plant away from pedestrian areas.
- Ensure pedestrian routes are fit for purpose.
- Routes across open areas should be as short as possible, avoiding busy areas.

Look after yourself
and each other



Don't let anyone act unsafely, always stop unsafe practices.

Personal Protective
Equipment



Always wear the correct PPE.

Tools and Equipment



Use the right, well maintained, tools/
equipment for the job. Never make do.

Safe Systems



Follow safe systems of work, site rules,
signage and traffic signals.



STOP THINK ACT

SAFETY ALERT

UK SA09/2021 – 16.07.21

Display Until
27/08/2021



FALLING KNIFE CAUSES PUNCTURE WOUND

DETAILS OF THE INCIDENT

New cables had recently been fixed to elevated cable trays by two electricians. Both electricians were working from their own steps alongside each other. Whilst dressing in the newly installed cables, the electricians were using a fixed blade Stanley knife to cut the excess from the ties. The morning was quite warm so one of the electricians went to take his jumper off leaving a fixed blade Stanley knife on top of his step ladders. The other electrician then went to move his steps and the knife fell and hit the injured person on top of his left forearm causing a 20 millimetre laceration and puncture to his forearm. First Aid was given on site by compressing a medium bandage over the laceration. The Project Manager of the site then drove the injured party to hospital, where they x-rayed the injury and inserted two stitches to close the wound up. The injured person returned to work the next day.

KEY FINDINGS

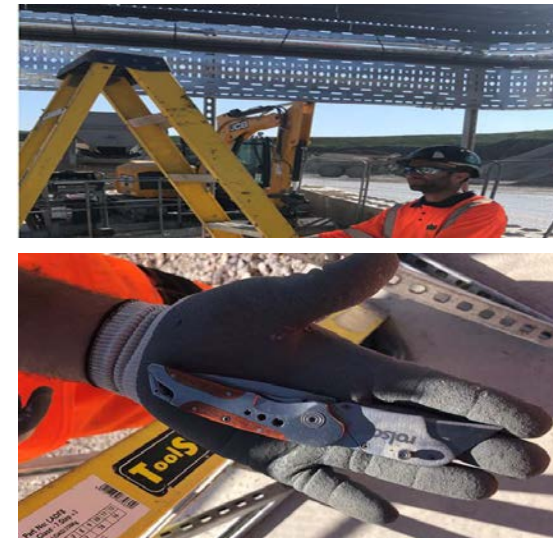
- Induction and daily brief completed prior to work commencing.
- Contractors were operating under a Permit To Work with Risk Assessment, Method Statement & WorkSafe. The hazard of working with Stanley knives had not been taken into consideration within the Risk Assessment and Method Statements.
- The CEMEX rule of not using fixed blade knives had not been communicated to the Contractors.
- Incorrect tool selected and used for the task.
- Injured person was wearing a very light hi-viz jerkin, maybe overalls could of offered more protection.
- Other safer forms of access could have been used for example tower scaffold.

KEY REVIEW POINTS

- Ensure all risk assessments and method statements are thoroughly reviewed by all parties, followed and amended where needed.
- Ensure all CEMEX rules are communicated in full and understood.
- Ensure all CEMEX sites are checking for fixed blade knives.

HOW COULD THIS HAVE BEEN AVOIDED?

- Produce a formal check sheet making Contractors aware of all company rules.
- Carry out point of work risk assessment (e.g. Take 5) before a task and whenever a change occurs.
- Ensure appropriate measures are applied when working at height.
- Ensure tools / equipment aren't left on platforms and are stored appropriately.
- Ensure all Risk Assessments and Method Statements are agreed and adhered to by all parties.



Look after yourself and each other

Don't let anyone act unsafely, always stop unsafe practices.

Safe Systems

Follow safe systems of work, site rules, signage and traffic signals.

Tools and Equipment

Use the right, well maintained, tools/equipment for the job. Never make do.

Working At Height

Use appropriate access equipment and fall protection.

Personal Protective Equipment

Always wear the correct PPE.



STOP THINK ACT