

# SAFETY ALERT

UK SA16/2021 – 29.11.21

Display Until  
07.01.22



## VEHICLE ROLLOVER...DRIVER REQUIRES 24 STITCHES

### DETAILS OF THE INCIDENT

A contract tanker driver was travelling on the A515 in Ashbourne when he lost control of the back end of the vehicle and it rolled over, skidding along the road and colliding with another vehicle. It is believed the movement on the back end of the vehicle was caused by catching the soft verge, and when the driver attempted to steer away from the verge this caused the vehicle to destabilise and tip over...

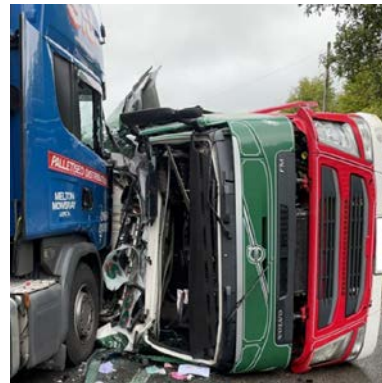
The Emergency services attended the incident and the driver was cut from the vehicle. The driver sustained cuts and grazing to his arm and was taken to hospital where he received 24 stitches in his right arm and was released 5 hours later.

### KEY FINDINGS

- The driver was wearing his seatbelt which saved him from more serious injury or even death.
- The driver was travelling at 32mph, well within the 50mph limit when the accident occurred.
- Weather conditions were poor with heavy rain and fog patches
- The driver was not using his mobile phone
- The driver had recently completed the MPQC Site Safety Awareness course which covers soft verge / rollover risk

### KEY REVIEW POINTS

- Remind drivers to wear their seatbelt...This helped avoid serious injuries in this incident.
- Drive to the weather conditions not to the speed limit; travelling significantly lower than the limit reduced the severity of this incident.
- Consider whether alternative routes are available that avoid known local hazard spots.
- Confirm Driver inductions make specific reference to known hazards, such as soft verges in this case.
- Liaise with local councils as appropriate to see if road improvements can be made.



### Driving

Drive safely, ensure you are authorised and that vehicles/mobile plant are well maintained.



#### Journey Planning

Assess the risks and plan your journey to use the safest route.



#### Seatbelts Save Lives

Wear your seatbelt and make sure any passengers do as well.



#### Watch your Speed

Keep below the limit and adjust your speed to suit road and weather conditions



#### Remember

– Your family depends on you.  
So drive to arrive safely at all times!



STOP THINK ACT