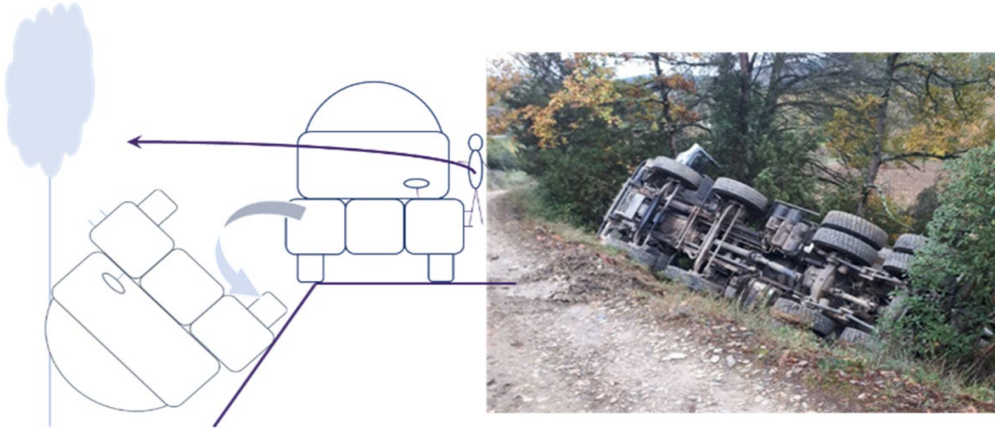


GLOBAL SAFETY ALERT

CONTRACTOR FATALLY INJURED

INCIDENT DETAILS

A contractor was reversing his readymix truck along a site access track in a rural area. After approximately 100m the vehicle deviated from the center line, however the contractor driver stopped immediately when alerted by the job site manager who was guiding him. He paused the rotation of the truck mixer drum and got out of his cab. At that moment, the truck tipped over on to the passenger side and the driver, who was then standing on the driver's side cab steps, was thrown to the opposite side of the truck and he collided with a tree.



- The truck deviated from the center of the road and stopped partially on the embankment in an unstable position
- The access road was uphill and without space to turn at the jobsite, requiring the driver to reverse along the 300m access road; however, the road was sufficiently wide and in good condition.
- The truck was not fitted with a rear-view camera, which would have provided the driver with an additional view of the access road.
- It appears there could have been a failure of concentration by the driver who deviated from the centre line of the access road when reversing.

February 1st, 2022

SA 2022 / 01

MANAGERS – KEY POINTS TO CHECK

- All trucks have the correct safety features, as required by our company standards and there is an audit process to identify any deficiencies.
- All drivers are trained and regularly reminded about how to make pre-maneuver assessments, the importance of double checking their reversing zone and how to reverse safely
- There is enough information about customer sites in terms of hazards and control measures to ensure a safe delivery and this information is transmitted to relevant drivers

ALL PERSONNEL – ACTION TO TAKE

- Always thoroughly assess your intended maneuver zone and then please double check to be sure it's safe
- Never reverse if you have any doubt about whether it's safe, or if your line of travel is unclear
- Report any hazard that you identify on customer sites and stop any delivery if you think it's unsafe
- Always maintain direct visual contact with a signaler when you are assisted during maneuvers



Look after yourself
and each other



Safe
Systems



Site
Safety