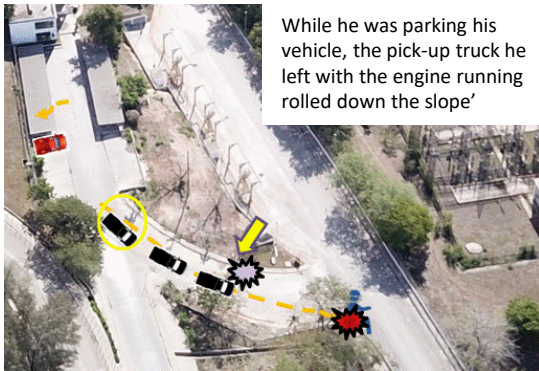


# GLOBAL SAFETY ALERT

## MEMBER OF THE PUBLIC FATALLY INJURED

### INCIDENT DETAILS

An employee 'jump-started' a company pick-up truck (utility car), using another vehicle and afterwards, with the handbrake activated he left the engine running to help re-charge the battery while he parked the other vehicle. While doing this, the pick-up truck started to roll forwards and down a slope in a straight line to a resting point after crashing through a fence and colliding with the person.



While he was parking his vehicle, the pick-up truck he left with the engine running rolled down the slope'

Trajectory of the Pick-up



View of impacted fence and final position of pick-up truck

Point of impact

### KEY FINDINGS

- Our employee carried out the jump-start operation on a slope and he didn't use wheel chocks.
- There was a policy for the use of wheel chocks on vehicles, but it did not specify light vehicles (utility vehicles) were in scope.
- The handbrake was activated and the light on the vehicle dashboard was on, but it did not work, because the brake bands were worn out.
- Problems with the emergency brake were not identified or reported.
- There was no policy for assigning responsibilities for the maintenance and when to take such vehicles out of service.

### MANAGERS – KEY POINTS TO CHECK

- All employees and contractors have received the relevant policies and procedures for the correct way to fully isolate vehicles to prevent them from accidentally moving and the requirements are strictly enforced.
- Sufficient training is provided to make sure everyone understand the requirements and how to deploy them safely and they are reminded to never take risks.
- Utility vehicles are included within effective maintenance regimes and responsibilities are clearly defined, including the reporting of faults and when to take a vehicle out of service.

### ALL PERSONNEL – ACTION TO TAKE

- Always follow the vehicle isolation safety procedure to prevent the potential for vehicles to move and to prevent others from driving the vehicle.
- Wheel Chocks are an important part of the vehicle isolation procedure, please take the time to use them, they can save a life!
- If you are aware of a fault with your vehicle, report it to your supervisor and log it using your pre-start check/defect reporting system. Depending on the type of fault, the vehicle will be taken out of service until its repaired.



Isolation  
Procedures



Tools /  
Equipment



Safe  
Systems