



UK NEWS



Welcome to UK News 26th May 2022
your weekly update from around CEMEX UK

View UK News on: www.cemexuknews.co.uk

Follow us on twitter too: @CEMEX_UK



HEALTH & SAFETY

Well Done Pat for Stepping In



Patrick Gregory, Relief Plant Manager at Hendon Concrete plant, displayed exemplary behaviour, stepping in to support individuals involved in a road traffic incident.

Pat was in his CEMEX van sitting in stationary traffic on the A120 dual carriageway near Colchester. The traffic had been at a standstill for over an hour when people started to get out of their cars. A couple of cars ahead of Pat, a mother and toddler had got out of their car, meanwhile, a motorcyclist was driving between the stationary cars. The toddler ran out between the cars and was unfortunately hit by the motorcyclist. Although his speed was low the child was knocked to the ground.

Pat grabbed his first aid kit and rushed to support the injured toddler, distressed mother and motorcyclist. Pat administered first aid on the toddler, bandaging a large cut on his forehead. He also provided comfort to the mother who was in shock and very distressed, and to the young motorcyclist who was also very upset. By staying calm and acting quickly, Pat was able to support the people involved until the emergency services arrived.

Pat's Manager, Nigel Bateman, Senior Operations Manager London, commented: "We are very proud of what Pat did to ease the situation and administer first aid. This is a great example of good behaviour – stepping in, staying calm and providing support where needed during a stressful situation. Well done Pat."

Rail Safety Awareness Completed



Over the last two weeks, 14 CEMEX colleagues from across the business completed their Rail Safety Awareness training course at two locations – Dove Holes quarry in Buxton and Stourton Asphalt plant in Leeds. Some were taking it as a refresher while others were taking it for the first time. Congratulations to everyone who took part – all passed with flying colours.

The course, run by Colette Ranford from Victa Railfreight, covered instructions, knowledge and understanding to ensure trainees are competent when walking safely on or about our CEMEX railway yards and sidings. Course content included an overview of rail terminology and definitions, the railway environment, our responsibilities when working in the



rail environment, safe walking around rail yards and sidings, safe working, emergency situations and effective communication.

Tina Baxter, Communications Adviser, attended the course at Stourton plant. She said: “My role involves visiting different CEMEX rail yards with photographers, film crews and other types of visitors and the course has given me the confidence to work safely in these challenging environments. It gave me an excellent overview of railway terminology and environments and an awareness of hazards that can be found around a rail yard, how to keep myself, my colleagues and my visitors safe around the rail yard, what my responsibilities are and what to do if we see hazards.”

Global Safety Alerts

SAFETY ALERTS

In the UK News downloads section [here](#) and at the end of this document, you can read two Safety Alerts relating to two fatal incidents in our operations overseas.

Sadly a contractor died in the first incident (SA 2022 No. 05) when he was crushed by a ground investigation drill rig as it overturned. Two members of the public died in the second incident (SA2022 No. 06) when a contracted truckmixer collided with the rear of their car.

Please review the Alerts with your team, including employees and contractors in your discussions. While the specific equipment in the first Alert is not common, the discussion is a good opportunity to highlight the need for effective risk assessment and planning of contract activities, with relevant hazards, risks and precautions being communicated to the work team. It is also an opportunity to stress the need to follow Safe Systems of Work wherever winching or towing activities are taking place, and the benefit of taking the time to Stop & Think and Take 5 before starting a task to help ensure we stay out of the line of fire.

If anyone is aware of equipment similar to that in the Alert being in use in our operations, please advise a member of the Health & Safety Team so a specific review can be carried out.

The second incident acts as a reminder for us all, of the risk of driving while tired and the need to stop and take a break from driving if suffering from fatigue. In addition, for Haulage Drivers, it is essential we monitor and comply with CEMEX requirements and legislation regarding driving hours.

Please take action to address any shortfalls in standards.

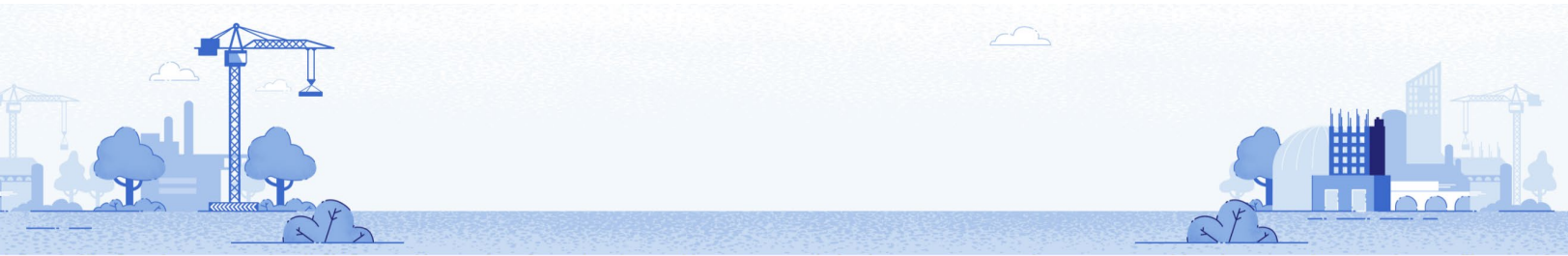
Please also display the Alerts on your relevant noticeboards.

UNGC Leaders' Summit 2022



On 1st and 2nd June, you can participate in the largest sustainability event in the world – a multisession digital experience convening thousands of global leaders for 26 hours in every time zone.

The United Nations Global Compact Leaders' Summit brings together thousands of forward-thinking business leaders, SDG stakeholders, activists, policy makers and emerging leaders from across the globe



who are taking action on the SDGs and shaping the future. CEMEX is part of the UNGC since 2004.

Join virtually for over 24 hours of inspired conversation, purposeful networking, and meaningful takeaways. Access with your CEMEX email. Register [here](#).



CUSTOMER CENTRICITY

Midlands Shipping Relaunches in Birmingham



Readymix Midlands will relaunch their Shipping team from Monday 30th May following a recent restructure which saw two offices consolidate into one.

This is an exciting time for CEMEX's biggest metro market outside of London and a great opportunity for us to improve our service offering to our customers. An ambitious timeline of only two months has seen the recruitment and training of four new Transport Planners, who will work alongside the original Shippers to form our new team based at Oldbury.

They launch on Monday 30th May – 0121 368 2204 – with just the three options for our customers – Press 1 for orders for Birmingham, 2 for West Midlands and 3 for East Midlands.

Paul Cooke, Readymix Freight Manager UK, said: "Thanks to everyone's support for making this work, with a special mention for Naomi Gough (who will Team Lead the new team) and Jamie Helps who has relocated in the short term from Wick office to support with training and development."

Rob Sims, General Manager for UK Materials: Midlands, South West & Wales, added: "It is great to see our Planning team now in the Oldbury office, with a full team ready to help deliver on our service promise to ensure our customers get the best experience possible."

Exciting times ahead for Team Midlands.



FUTURE IN ACTION

May RSPB Blog Out Now

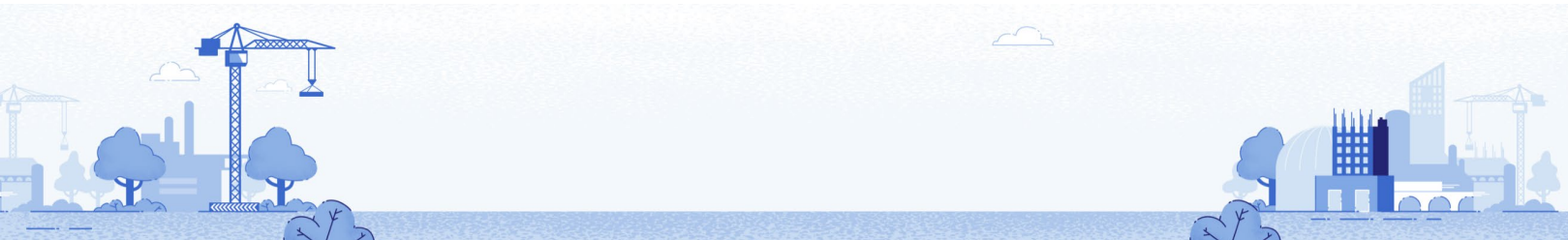


The May 2022 edition of Earthly Matters, the blog dedicated to the partnership between CEMEX and the RSPB, has now been published.

We hope you enjoy this edition of the blog – please do get in touch on: gb-communicationsandpublicaffairs@cemex.com with any feedback or wildlife stories you would like to share.

In this month's edition:

- Planting trees for the Jubilee



- Connecting with Nature
- Importance of Deadwood

You can read it [here](#).

Book Drive Reminder



Earlier this month we shared how CEMEX is supporting pupils at Long Lawford Primary School near Rugby Cement plant, by donating a new book vending machine. This has now arrived at school and will be supporting the school's 'Reading for Pleasure' initiative which aims to create a positive mindset for pupils to view reading.

To bring it to life we want to stock it with books and this is where we are looking for your support to donate your unwanted/outgrown books.

This could be an opportunity to spring clean your children's bookshelves and donate any books they no longer want. We welcome books in good condition, they can be any size.

You can find out the types of books we need by reading our previous article [here](#).

You can drop off your book donations at the receptions of both CEMEX House and at Rugby Cement plants. Donations need to be dropped off by 10th June please.

Thank you!

Lend-A-Hand – Get Involved



Were you inspired by the Dove Holes Night Shift team's lend-a-hand activities (read all about it [here](#)) and want to get involved in lend-a-hand?

To celebrate #WorldEnvironmentDay we are encouraging activities that support CEMEX's commitment to climate action, environmental protection and improving the well-being of community members.

You may be aware of areas near by that require cleaning, litter picking, painting or tree planting. Get together with your team members and decide which activity you can undertake in your local area. Team members are welcome to select a date around 5th June rather than on the day itself due to the Jubilee weekend.

Once you have identified a potential activity, you can reach out to the site Supervisor/ Manager and agree on a date for the activities.

Here are a few quick steps to planning the activity:

- Nominate someone to coordinate the activities.



- Ensure the coordinator finalises site identification and obtaining relevant authorisation for the activity both internally and externally – likely the relevant council if the activity is being done in a public space.
- Coordinator is welcome to identify and propose a suitable partner for the event (not compulsory).
- The coordinator can get team members to sign up through Benevity – Volunteering for the environment | CEMEX UNITE (benevity.org).
- Alternatively enter team member details on this form Volunteering Group List of participants.
- The coordinator needs to identify resources and equipment required for the activity.
- Social impact will organise a few tools so get in touch and find out what is available.

Get together with your team members and use this volunteering activity not only as a team building opportunity but as a chance to look after your physical and mental well-being by getting involved in physical activity.

Do not hesitate to contact socialimpactuk@cemex.com if you want to know more. Please sign up and make a difference!!

To find out more about CEMEX UNITE's lend-a-hand initiative please our video [here](#).

Pygmyweed Invasion



In the UK News downloads section [here](#) and at the end of this document, you can read the Biodiversity Briefing, giving information on the invasive plant, New Zealand Pygmyweed, which has been found on several CEMEX sites.

If you suspect you have New Zealand Pygmyweed at your site, it's important to contact Sean Cassidy. It's also important not to spread the invasive species – don't walk on it or disturb it – even small fragments could be carried to other sites. Don't try to dig it out with mobile plant or

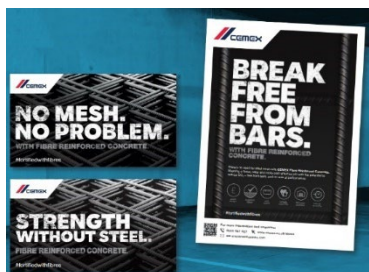
equipment, experience has shown this only spreads the invasive species faster, so expert advice or supervision is required.

For further details or information, please contact a member of the Sustainability Department.

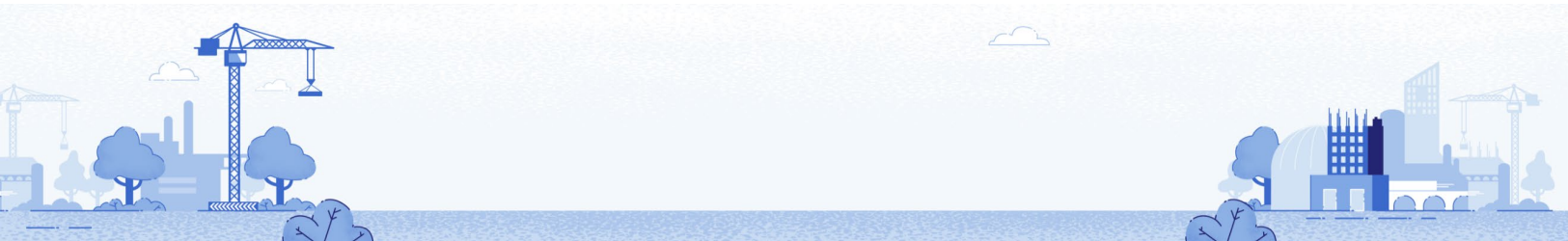


PROFITABILITY

Taking Advantage with Advanced Reinforced Concretes



Statistics compiled by the Department for Business, Energy and Industrial Strategy have shown that the cost of concrete-reinforcing bars has risen by 43.6 per cent year on year, while the price of fabricated structural steel has jumped by 35.9 per cent. It was reported that March saw the biggest instant price hike British Steel have imposed. Experts believe that the ongoing impact of the Russian invasion of Ukraine could push prices further still.



Hoping to take advantage of the soaring steel prices, CEMEX is increasing its marketing activities to promote our range of Fibre Reinforced Concrete, forming part of our overall VAPS strategy.

In May, we launched our 'Break free from bars' Fibres campaign, promoting how steel mesh, a traditional reinforcement for concrete, can be replaced by Fibre Reinforced Concrete.

How can Fibre Reinforced Concrete benefit our customers?

- Saves money: Reduced use of steel material and storage/labour time
- Reduced construction time: Removes the time needed to place the mesh
- Less waste: As no need for cutting and placing of steel
- Reduced storage: No storage of steel mesh on site
- Minimal handling: No cutting, placement and fixing of traditional mesh required. Can be placed using standard techniques, with no specialist equipment needed
- Faster to place: Concrete and fibre reinforcement is placed in a single operation

In June we will continue to promote our macro fibres but will also be promoting our ADVANCED range of high-performance concrete with our 'Fortified with fibres' and 'Strength from within' campaigns. Our ADVANCED range includes ADVANCED Flooring, ADVANCED Paving, ADVANCED Design, ADVANCED Decking and ADVANCED Beam & Block.

Also look out for a new Admixtures being launched in June. ISOFIBER 1100 is a next-generation natural micro-fibre solution, ideal for reducing the risk of cracking in concrete.

As part of our media campaigns, we will be sharing posts on social media – we would love you to share these in your own feeds to help maximise our reach.

We have produced a guide 'Inside Fibres' telling you all you need to know about fibres. This guide was created for internal use, please do not share externally. You can download it from the UK News website: www.cemexuknews.co.uk/downloads A copy can also be found at the end of this document.

You can read even more about any of our ADVANCED products on the CEMEX UK website here: <https://www.cemex.co.uk/advanced-fibre-reinforced-concrete>



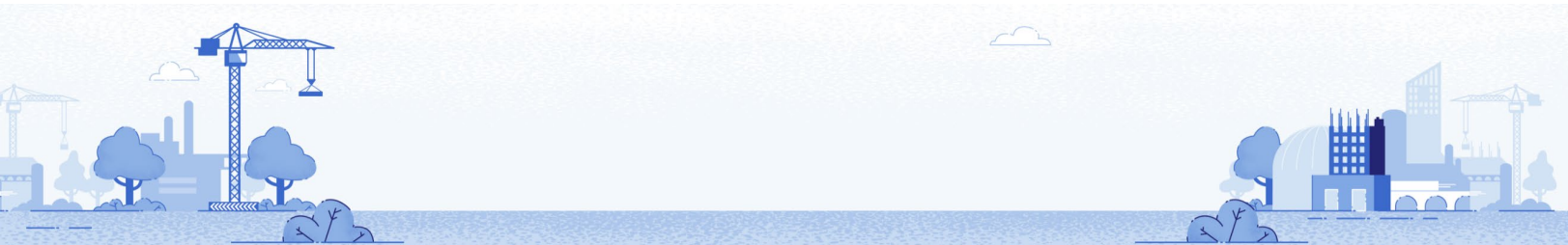
EMPLOYEES

Colin's Ride London 100



This Sunday, 29th May, our UK Security Manager, Colin Jones, will be taking part on the London Essex Ride 100 in support of Dementia UK.

As the name suggests, this event involves a 100 mile cycling challenge on closed roads through London, the Epping Forest and rural Essex. With an early off from the Embankment area of central London, Colin and his long time cycling partner, Alistair (both pictured), will join 25,000 other riders who have just eight hours to complete the challenge which culminates in a spectacular finish on the iconic Tower Bridge.



Colin is raising funds for Dementia UK, a charity very close to his heart. He said: "The Ride 100 is a huge event in the cycling calendar and it's a real privilege to be taking part. Many colleagues will know, Dementia and Alzheimer's has been a heart breaking challenge in the lives of my family and I for over three years, with both my parents being diagnosed within a week of each other. These are unforgiving illnesses that draw cruelly on the quality of life of all those that fall ill with it. Whilst there are moments of relief and of course humour, the dark truth it's like losing your parents while they're actually still here. ...

Take a moment to let that sink in and imagine how hard it is for those that suffer it! Dementia UK do amazing work providing life-changing care and support to sufferers and their families and I'm keen to raise as much funding as possible to help."

We wish Colin and all the competitors well for the event. You can follow his progress live on the day by downloading the RideLondon App for free. Should you wish to contribute to the cause, you can do so via the JustGiving platform at: <https://www.justgiving.com/fundraising/colinjones711>

Ryan Passes his HGV Test



Congratulations to Ryan Mayo who is the second of the Rugby based Driver Apprentices to pass his HGV C+E (HGV class1). Ryan has been with us since October and like his colleagues, passed his tanker discharge assessment and completed his MPQC site safety awareness course, in preparation for getting behind the wheel of one of our cement fleet. Well done to Ryan and thanks to his driver mentor, James Ward. We are looking forward to seeing Ryan progress through the apprenticeship and become a fully skilled CEMEX professional driver.

After passing his test Ryan commented: "I thought my driving lessons were really good and they were very understanding on the various things I needed more work on, they were very professional and always went the extra mile to help. There was no pressure of timings because everything was booked before. It feels amazing to have passed my test and I cannot wait to start driving for CEMEX."

Well done Ryan!

Long Service Awards



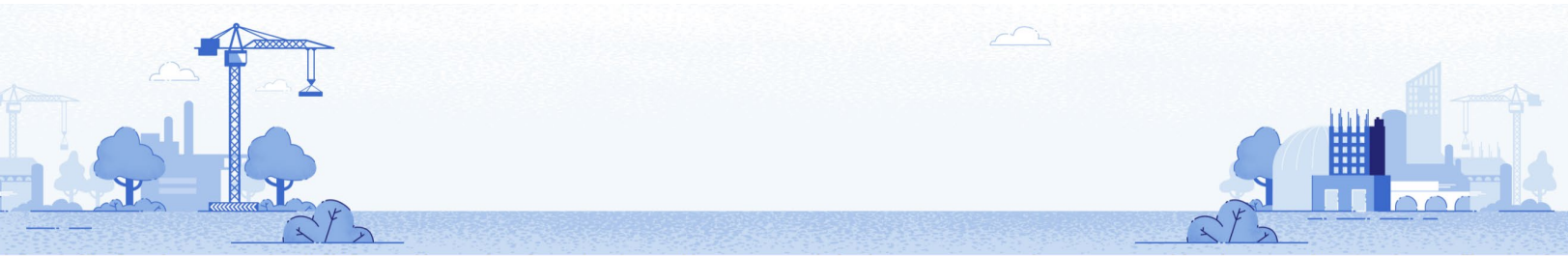
We would like to send a huge congratulations and thank you to the following colleagues for reaching long service milestones this month.

We appreciate all your contributions and hard work over the years:

Deborah Gregory, Administrator at Dove Holes, reached 25 years on 1st May 2022.

Jo Wright, Coordinator at Rugby, reached 15 years on 1st May 2022.

Karl Langford, Class 1 Driver at Rugby plant, reached 15 years on 1st May 2022.



Patrick Gregory, Relief Plant Manager at Hendon Concrete plant, reached 15 years on 14th May 2022.

Hannah Hyslop, Specification Manager at Bray, reached 15 years on 15th May 2022.

Imogen Parsons, Direct Tax Manager, reached 15 years on 23rd May 2022.

Internal Vacancies

IVC Ref	Position	Company	Location	Closing date
146-05-2022	Relief Plant Manager	Materials - Readymix	Yorkshire	27/05/2022
147-05-2022	Plant & Field Technician	Materials - Quality	Oldbury	31/05/2022
148-05-2022	Plant & Field Technician	Materials - Quality	Luton Plant	31/05/2022

We would love to hear from you for the next edition

To send us a story: either click on 'submit a story' on the UK News website or email gb-communicationsandpublicaffairs@cemex.com

If you can, please include a photo too (taken in super fine landscape setting and saved as a jpeg.) Thank you.

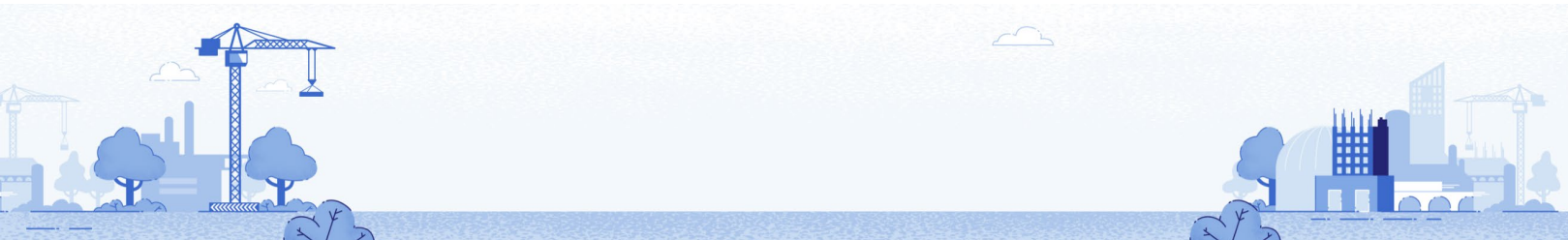
Employee Assistance Programme

Free, confidential support and counselling available for all employees

If you're worried about a work, family or personal issue then the Employee Assistance Programme can help, 24/7.

Support with everything from consumer rights to bereavement, depression & anxiety to childcare.

Visit www.lifestyle-support.co.uk (username: cemex / password: cemex) or call **0808 1682143**



GLOBAL SAFETY ALERT

CONTRACTOR FATALLY INJURED

INCIDENT DETAILS

A group of 3 contractors were carrying out exploration drilling activities at a site that isn't owned by CEMEX. To move the drilling machine to their next drilling point, because of the original design of the equipment, they needed to drag it using the machine's winch system and an anchor point. In this case, they used their truck as the anchor point. While doing this, one of the contractors needed to stand at the side of the machine to operate the winch controls (point 3 in the photo). During the dragging movement, the machine lost stability and suddenly rolled over to its side, trapping the contractor.



KEY FINDINGS

- The drilling machine is a skid mounted design (point 1) and has a winch (point 2) for a drag movement system. It weighs 1.5 Tons.
- The drilling machine design has been discontinued with production having ceased in 1997. The position of the equipment's controls places the operator in the line of fire in the event of a rollover. **Our operation has now removed theirs from service.**
- While trying to drag the machine, the truck (anchor point) was in the wrong position and force was applied in the direction of the camber and slope of the road.
- There was no specific risk assessment and safe system of work document for the activity of moving the drilling machine.

May 17th, 2022

SA 2022 / 05

MANAGERS – KEY POINTS TO CHECK

- Risk assessments are up to date and all relevant tasks have clear Safe Operating Procedures, with employees and contractors properly trained in the safe methods.
- Machinery and equipment is regularly inspected and certified for safe use.
- Obsolete machinery, and machinery that places people in the line of fire when used, is removed from operation – **Do you have a skid mounted drilling machine?**
- All equipment has a clear manufacturers approved operation manual in the local language, covering all activities and control of potential risks and it forms part of the training that's provided.

ALL PERSONNEL – ACTION TO TAKE

- Plan your activity carefully. Always Stop and Think before doing any task - **Take 5!**
- Be sure that you and your colleagues are never in the Line of Fire in case something goes wrong. If someone is at risk, please **Step In - Take 5 Together!**
- Be sure there is a clear Safe Operating Procedure for the job, and that you are properly trained. If you have any doubt, speak to your supervisor.



Look after yourself
and each other



Safe
Systems



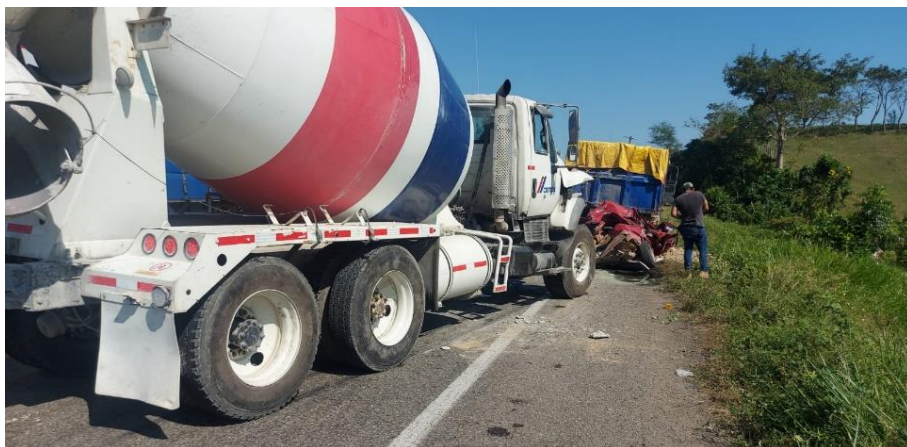
Tools and
Equipment

GLOBAL SAFETY ALERT

MEMBERS OF THE PUBLIC FATALLY INJURED IN TRAFFIC INCIDENT

INCIDENT DETAILS

A company mixer truck collided with a car that was parked at the side of the road behind a tipper truck that had broken down. The mixer truck impacted the car from the rear, crushing it between the two trucks. A passenger from the car passed away at the scene and a second person passed away in hospital a few days later.



The tire marks originated when the mixer truck was pulled back from the scene.

KEY FINDINGS

- The driver had fallen asleep while driving.
- The night before the incident the driver slept for only 6 hours.
- The motorway where the incident happened is a straight road of more than 33.5 km and this may have created some monotony and lack of focus.
- It was a hot day of 36° Celsius (96.8° F)
- The tipper truck and car didn't place any warning signs along the road.

MANAGERS – KEY POINTS TO CHECK

- The fatigue management policy is known by all personnel involved in the transport operations and it's strictly applied to all employee and contractor drivers.
- Effective systems are in place to proactively monitor truck drivers' rest days, working and driving hours.
- Truck defects are promptly dealt with, and trucks are not used until the defect is rectified if it poses a serious risk. This includes devices that will help keep drivers alert e.g., air conditioning.
- All drivers are constantly reminded about road hazards, to stay alert, and to never drive tired and these aspects are all included in driver training.

ALL PERSONNEL – ACTION TO TAKE

- **Never drive tired!** If you feel sleepy on the road, look for a safe place to stop and take a break.
- Always take your rest days and get plenty of rest and sleep between shifts. Your life, or someone else's may depend on it.
- Be alert to risks on the road and when you detect any new ones, provide information to your supervisor so that other colleagues can be informed.
- Always report faults on your vehicle using the pre-start check and defect reporting systems.



Stay Fit & Alert



Journey Planning



Safety Checks



Remember



INSIDE FIBRES

Everything you need to know about
Fibre Reinforced Concrete



Welcome to

INSIDE FIBRES

A special campaign focussed on adding value for the UK.

Adding fibres offer customers many extra benefits. We'll feature specifically two types of fibre solutions – **Micro and Macro**.

This also allows us to provide an overview of our value-added product range – **Cemex Advanced Concretes**.

MICRO FIBRES



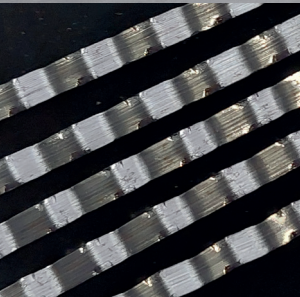
- Reduced surface cracking
- Tougher surface
- Concrete lasts longer
- Polypropylene, cellulose or natural hemp fibres

MACRO FIBRES



- Increased durability and post-crack performance
- Potential cost savings and CO₂ reduction verses steel mesh
- Polypropylene fibres

STEEL FIBRES



- Increased flexural strength and post-crack performance
- Increased ductility
- Fewer joints in floor

INSIDE MICRO FIBRES

1

CUSTOMER BENEFITS

- Reduces risk of plastic cracking
- Gives concrete a tougher surface - more resistant to impact damage
- Makes concrete more durable - it will last longer

2

APPLICATIONS

- Housing ground floor slabs
- Driveways
- Paths
- Hardstandings
- Patios
- Farm floors and paved areas
- Light commercial floors

3

TARGET CUSTOMERS

- Cash sale customers
- DIY and general public
- Small builder
- Landscaper and driveway contractor
- Farmers



Paving



Driveways



Conservatories



Foundations



Garage floors



Agricultural



**IDEAL TO UP-SELL
MICRO FIBRES ON BRANDED MIXES
– READYMIX PAVING AND FLOORING**



NATURAL HEMP FIBRES



ISOFIBER 1100 is a natural micro fibre for improving the properties of concrete and mortar building elements. The fibre guarantees a fast and three-dimensional distribution. It offers added value compared to existing polypropylene fibres, including the benefit of a non-plastic eco-solution.

INSIDE MACRO FIBRES

1 CUSTOMER BENEFITS

- Increased flexural strength
- Provides post-crack performance
- Increased impact and abrasion resistance

2 APPLICATIONS

- Internal floors
- External loading
- Roads and bridges
- Airports and taxiways

3 TARGET CUSTOMERS

- Contractors
- Groundworkers
- Civil engineers
- Flooring contractors



Internal floors



External loading



Airport taxiways



Car parks



Recycling plants



Bridges



There's no need for steel mesh with macro reinforced concrete. Meaning a faster, safer and more cost-effective job – free from bars, no loss of performance and potential CO₂ reduction.

Reduced construction time

Removes the time needed to place the mesh

Less waste

Concrete supplied with exact amount of reinforcement required

Saves money

Reduced use of steel material and storage/labour time

Reduced storage

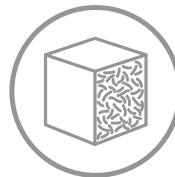
No storage of steel mesh on site

Minimal handling

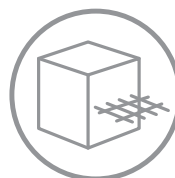
No cutting, placement and fixing of traditional mesh required
Can be placed using standard techniques, with no specialist equipment needed

Faster to place

Concrete and fibre reinforcement is placed in a single operation



ADVANCED REINFORCEMENT IS DISTRIBUTION EVENLY THROUGHOUT THE MIX



MESH REINFORCEMENT REQUIRES EXACT POSITIONING TO BE EFFECTIVE

OUR NEW CAMPAIGN

Launching in May is a new marketing and comms campaign communicating the benefits of using fibres as an alternative to steel mesh – **BREAK FREE FROM BARS.**

This will include print and digital advertising as well as promotion through our social media channels. Feel free to share any social media posts to your network.



SAVES MONEY



MINIMAL HANDLING



SUPERIOR FINISH



REDUCED STORAGE



LESS WASTE



FASTER TO PLACE

#fortifiedwithfibres



INTRODUCING OUR ADVANCED MACRO FIBRE CONCRETE RANGE

High-performance concrete – fortified with fibres.

CEMEX Advanced Concretes are pioneering products that combine micro and macro-synthetic fibres to give a new level of performance in reinforcement.



A mesh-free concrete, designed specifically to meet the demands of internal ground supported floor slabs.



APPLICATIONS

- General industrial flooring
- Workshop flooring
- Farm buildings
- Domestic flooring



A fibre-reinforced, mesh-free concrete, designed specifically to meet the demands of external ground supported floor slabs.



APPLICATIONS

- External ground supported slabs
- Roadways and pavements
- Farmyards and roadways
- Domestic driveways



A high-performance, fibre-reinforced concrete, offering bespoke concrete design solutions for both internal and external floor slabs applications.



APPLICATIONS

- Internal and external ground supported slabs
- Heavy duty floors with high abrasion risks
- Recycling plants
- Large plant machinery and yards
- Docks and maritime facilities
- Military sites



High performance, fibre-reinforced structural concrete toppings made with macro or steel fibres to reduce risk of cracking.



APPLICATIONS

- Traditional beam & block floors
- Insulated beam & block floors



A fibre-reinforced concrete for composite metal decking, when additional durability is needed.



APPLICATIONS

- Approved for use on the following composite metal decking systems
- Tota Comflor product range
 - CMF Metfloor product range

MACRO FIBRES FAQs

Can macro polypropylene fibres be used in structural concrete?

Yes. High-performance polypropylene fibres will enhance both plastic and hardened state properties of structural concrete. Additionally, they are often used to replace or supplement structural reinforcement. These are high-performance fibres outside of the Advanced range, and advice should be sought when considering replacement of structural reinforcement.

Is it more cost-effective to use advanced polypropylene fibre instead of crack control steel mesh?

Generally, yes. However, savings will be greater when heavier types of crack control steel mesh are being replaced. There is also a saving in handling and an increase in the site productivity, as the mixer can reverse right up to the point of placing.

Are any special finishing techniques required?

No. The concrete can be compacted and finished normally. Trowelling will help to embed the fibres into the concrete surface. Some fibres may be exposed but these can be easily removed on completion of finishing operations.

Can concrete with advanced polypropylene fibres be pumped?

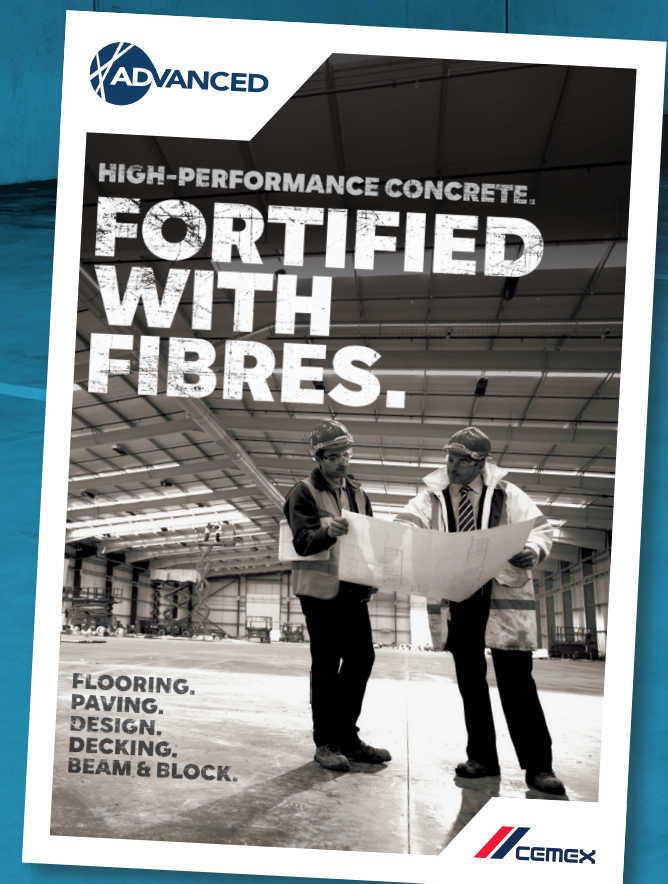
Yes. Although some adjustments to the mix design may be necessary depending on fibre dosage requirements.

Are movement joints necessary?

Yes. Contraction joints are necessary and should be spaced at intervals no greater than 8 metres. Bays should be kept as square as possible.



To complement the **BREAK FREE FROM BARS** campaign, we'll be running a social media campaign promoting Advanced, and introducing a new Advanced brochure.



If you have any questions, please contact:

Marketing – Caroline Gardner – caroline.gardner@cemex.com

Product – Mike Higgins – mike.higgins@cemex.com



BIODIVERSITY BRIEFING

New Zealand Pygmyweed/Swamp Stonecrop

Introduction

This briefing is designed to improve awareness of *Crassula helmsii*, an invasive species better known as New Zealand Pygmyweed or Swamp Stonecrop. The plant originates from Australia and New Zealand and has been introduced around the world over the last one hundred years. Gardeners used it to oxygenate ponds or small bodies of water until it was banned from sale at garden centres in 2014. The species escaped into the UK countryside during the 1950's and is now found at thousands of sites. The plant thrives in small or slow-moving water bodies, where it quickly forms impenetrable mats which kill or drive away native species. If left undetected it will rapidly form large dense mats on the surface or edges of water bodies. We are aware of its presence at a few CEMEX sites and so it is important we highlight the problem.

The invasive species is listed on Schedule 9 of the Wildlife and Countryside Act 1981, so it is an offence to plant or otherwise cause it to grow in the wild – the implication being that CEMEX sites must not become donor sites where the species can spread into the wider countryside as we could be liable for prosecution.

Removing New Zealand Pigmyweed

Early and regular treatment is highly recommended. In small ponds, regular digging out of the plant may be an effective control technique, but care needs to be taken as small fragments can disperse and regenerate. New Zealand Pygmyweed does seem to be less vigorous in ponds with plants that provide some shade, like that provided by the native bogbean *Menyanthes trifoliata*, for example. On the edges of water bodies, covering infestations with black polythene for at least three months during the growing season can also be effective, although be aware this technique has adverse effects on native species.



Pictures show New Zealand Pygmyweed (*Crassula helmsii*) which has leaves similar to native Stonecrop species. The flower however only has four prominent petals which is markedly different to native stonecrops which have five. The invasive species also forms extensive mats on or beside water bodies, no native stonecrop would do this.



Native English Stonecrop – five petals

Key Points

- If you suspect you have New Zealand Pygmyweed at your site, it's important to let us know – contact either **Sean Cassidy** or **Jenny Oldroyd (RSPB)** for further advice.
- It's important not to spread the invasive species – don't walk on it or disturb it – even small fragments could be carried to other sites.
- Don't try to dig it out with mobile plant or equipment, experience has shown this only spreads the invasive species faster, so expert advice or supervision is required.

For further details or information, please contact a member of the Sustainability Department.