

# SAFETY ALERT

UK SA04/2022 – 13.06.22

Display Until  
15.07.22



## HIPO (High Potential) Fire on High Voltage Electrical Drive Panel.

### DETAILS OF THE INCIDENT

- A Trailer Suction Hopper Dredger was 2 hours into its regular and routine seabed dredging operation when a fire alarm activated in Zone 8 (Pump Room.) It was ultimately discovered to be an electrical fire on the dredge pump drive within the adjoined Pump-Motor Room within the same fire detection zone.
- Initially following the alarm sounding, the cause of the fire alarm was not clear within the large fire alarm zone.
- Upon discovery the fire was successfully extinguished by the ship's crew using portable CO<sub>2</sub> extinguishers, with no injuries to personnel and no damage to other equipment.

### KEY FINDINGS

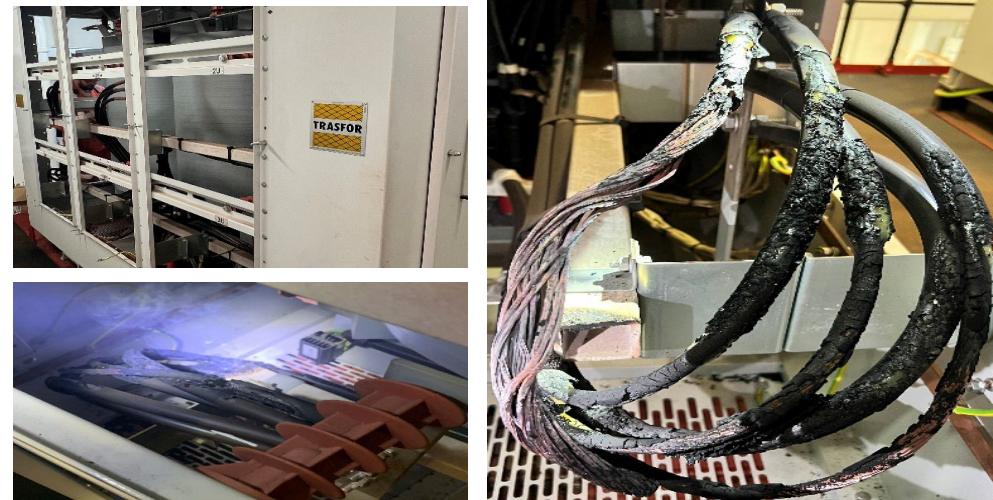
- Fire was located on electrical wire insulation that had overheated, this became possible due to chafing from vibration of vessel/machinery.
- No routine inspections in place.
- A large fire alarm detection zone caused delay in finding the cause of the alarm – No CCTV coverage.
- Diligent Crew continued to search for the source of alarm until found.
- Operations were stopped immediately, de-energizing the drive, limiting risk to personnel and of further damage to equipment.

### HOW COULD THIS INCIDENT HAVE BEEN AVOIDED?

- Robust inspection and maintenance schemes.
- Additional Fire detection zones / additional addressable Detectors installed.
- CCTV coverage of large fire detection zones.

### KEY REVIEW POINTS

- Always fully investigate for a source of a fire alarm, avoid speculation of causes.
- Use thermal imaging as part of preventative maintenance schemes, where appropriate, to identify potential fire sources, particularly within electrical installations.



### Look after yourself and each other

Don't let anyone act unsafely, always stop unsafe practices.

### Tools and Equipment

Use the right, well maintained, tools/equipment for the job. Never make do.

### Safe Systems

Follow safe systems of work, site rules, signage and traffic signals.



STOP THINK ACT