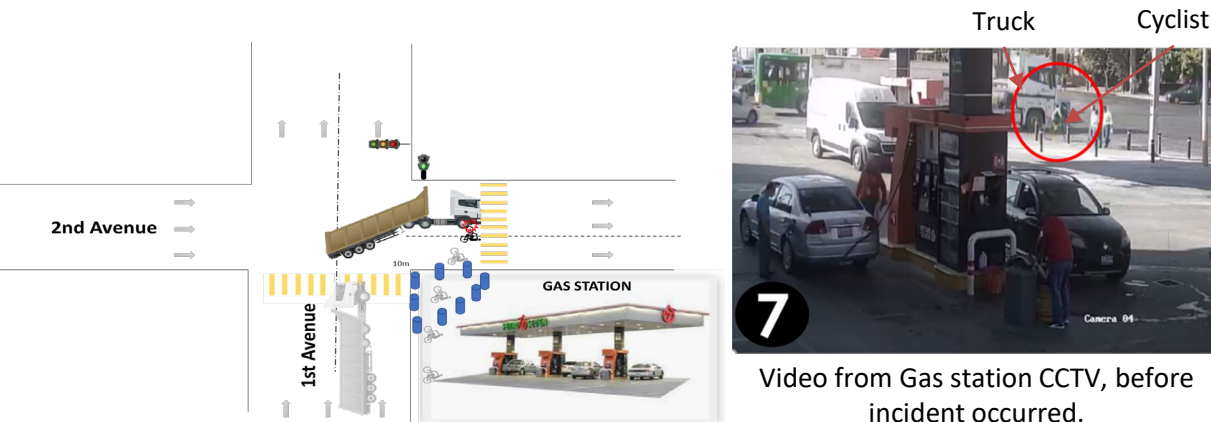


# GLOBAL SAFETY ALERT

## CYCLIST FATALLY INJURED

### INCIDENT DETAILS

A company truck driver stopped at a red traffic light and when it changed to green, he moved forward and turned to his right. While making this maneuver, his truck collided with a cyclist who was travelling in the same direction along the inside of the truck. Our driver hadn't realized the incident had occurred until a member of the public in the area alerted him.



Video from Gas station CCTV, before incident occurred.

### KEY FINDINGS

- The proximity sensors and right turn warning alarms were not working because of a design fault.
- The truck driver said he observed the cyclist when he stopped at the red light but was then not able to see him as he turned right, because he apparently had a blind spot.
- The cyclist tried to keep moving without observing with caution that the truck was turning to the right. Also, the cyclist's position did not allow him to see the truck's right turn signal.
- The truck stopped at the red light in the wrong position, blocking the pedestrian crossing, although that crossing was not going to be used by the cyclist. CCTV also showed our driver edging further forward several times before the light changed.
- Several distractions were present before and during the right turn, which included some colleagues who waved to our driver as they walked past.
- The pedestrian lights turned green at the same time as the roadway traffic lights and this type of arrangement can create confusion about who has the right of way.

### MANAGERS – KEY POINTS TO CHECK

- All trucks have the correct vehicle safety features and there is a procedure in place to remedy faults promptly and to park trucks up if there are pending critical safety items.
- Pre-start checks are made by the driver every shift and any faults are reported on the check sheet record, and verbally as well when the defect is serious.
- Blind spot prevention mirrors are fitted and correctly adjusted and included in the pre-start checks each shift. Drivers are also trained to constantly review their alignment.
- All drivers, including contractors, are well trained in defensive driving, including how to help protect vulnerable road users.

### ALL PERSONNEL – ACTION TO TAKE

- Always carry out your pre-start vehicle checks and report any defects. Never continue to use your vehicle if the fault is a safety critical item.
- Always be vigilant, regularly check your fields of vision and visibility aids and remain alert to the potential for vulnerable road users to be present.
- Never park across pedestrian crossings and always wait patiently at traffic lights and other stop signs. You might not be able to predict the actions of others, but if you always drive with caution, it can help prevent a serious incident.



Other Road Users



Safety Checks



Remember