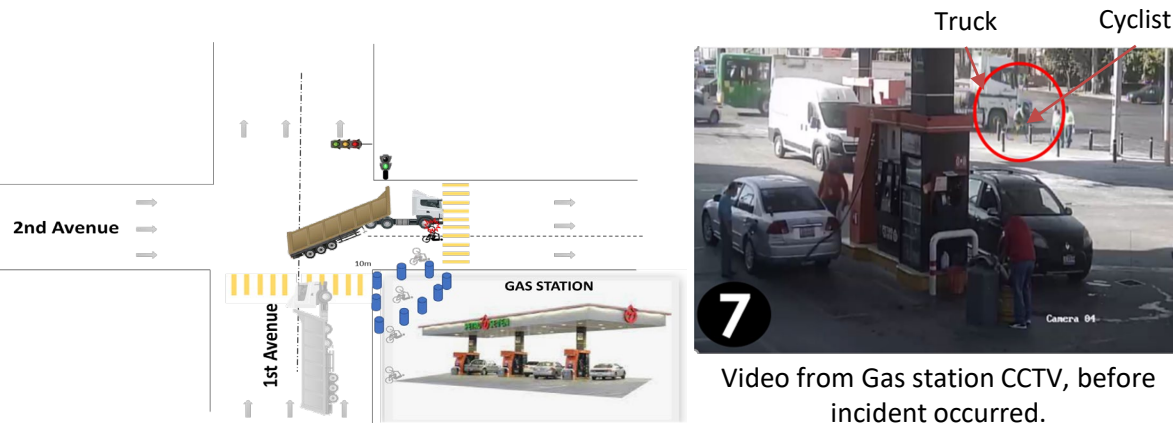


GLOBAL SAFETY ALERT

CYCLIST FATALLY INJURED

INCIDENT DETAILS

A company truck driver stopped at a red traffic light and when it changed to green, he moved forward and turned to his right. While making this maneuver, his truck collided with a cyclist who was travelling in the same direction along the inside of the truck. Our driver hadn't realized the incident had occurred until a member of the public in the area alerted him.



Video from Gas station CCTV, before incident occurred.

KEY FINDINGS

- The proximity sensors and right turn warning alarms were not working because of a design fault. *see update/correction on slide 2 .
- The truck driver said he observed the cyclist when he stopped at the red light but was then not able to see him as he turned right, because he apparently had a blind spot.
- The cyclist tried to keep moving without observing with caution that the truck was turning to the right. Also, the cyclist's position did not allow him to see the truck's right turn signal.
- The truck stopped at the red light in the wrong position, blocking the pedestrian crossing, although that crossing was not going to be used by the cyclist. CCTV also showed our driver edging further forward several times before the light changed.
- Several distractions were present before and during the right turn, which included some colleagues who waved to our driver as they walked past.
- The pedestrian lights turned green at the same time as the roadway traffic lights and this type of arrangement can create confusion about who has the right of way.

September 14th, 2022

SA 2022 / 09

MANAGERS – KEY POINTS TO CHECK

- All trucks have the correct vehicle safety features and there is a procedure in place to remedy faults promptly and to park trucks up if there are pending critical safety items.
- Pre-start checks are made by the driver every shift and any faults are reported on the check sheet record, and verbally as well when the defect is serious.
- Blind spot prevention mirrors are fitted and correctly adjusted and included in the pre-start checks each shift. Drivers are also trained to constantly review their alignment.
- All drivers, including contractors, are well trained in defensive driving, including how to help protect vulnerable road users.

ALL PERSONNEL – ACTION TO TAKE

- Always carry out your pre-start vehicle checks and report any defects. Never continue to use your vehicle if the fault is a safety critical item.
- Always be vigilant, regularly check your fields of vision and visibility aids and remain alert to the potential for vulnerable road users to be present.
- Never park across pedestrian crossings and always wait patiently at traffic lights and other stop signs. You might not be able to predict the actions of others, but if you always drive with caution, it can help prevent a serious incident.



Other Road Users



Safety Checks



Remember

GLOBAL SAFETY ALERT

CYCLIST FATALLY INJURED

EXTENDED INVESTIGATION

The investigation into this incident was extended to identify further learnings and subsequent actions to help prevent similar events in the future

KEY FINDINGS (Cont.)

- A truck inspection, after it was released by the authorities, confirmed the truck had all the correct mirrors as per the CEMEX standard. However, it was identified that their adjustment was not the optimal because of a lack of awareness by drivers and there was not a systematic requirement for the mirrors to be precisely adjusted before going on the road.
- Despite the truck also having proximity sensors, these were not connected at the time of the incident due to ongoing electrical issues within the truck electronic system that had developed soon after the unit was received by the operation.
- Due to operational needs, the truck was allowed to be on the road while the electrical issues were being resolved (sensors not operational), because at the time of the incident these devices were not considered in the operation as items that prevent the truck from being unsafe to use.
- The level of training that the driver received (Defensive driving and Vulnerable road users) was not effective, because there was not a formal process to ensure refresher training at specific intervals. This became more relevant because the driver had recently been relocated to a metropolitan area which was much denser in terms of Vulnerable Road Users compared to where he had previously been driving.

MANAGERS – KEY POINTS TO CHECK (Cont.)

- Pre-start checks clearly contain critical safety items that would prevent the truck from going on the road unless the item is working properly.
- The correct adjustment of mirrors is part of the daily activities for drivers before they go on the road.
- All drivers, including contractors, receive refresher training at adequate intervals on defensive driving and vulnerable road users.
- Drive along training exercises are included as part of the driver training program, especially for new or relocated drivers.
- There is a robust communication and sign off process between the local operation and the Procurement team to ensure all vehicle safety features are provided on new vehicles and that they are functioning correctly before the truck is commissioned for use.

ALL PERSONNEL – ACTION TO TAKE (Cont.)

- Always review and adjust the truck mirrors before you start operating the vehicle to ensure you have effective visibility of other road users and never operate a vehicle if a safety critical item is not functioning.
- Always follow the defensive driving principles and protection of vulnerable road users training that you have been provided.
- Always familiarize yourself with your intended route and think about the potential hazards and risks that may be present, including whether vulnerable road users might be present.



Other Road Users



Safety Checks



Remember