

SWANSEA WHARF EDGE PROTECTION

Nigel Street | 20 Feb 2023 | ID344

🚩 Idea of the Month Competition Nominees

✅ Closed with success by Nigel Street

Approver: Nigel Street

Implementation coordinator: Nigel Street

Plan: Quick Wins

Classes: Efficiency + Health & Safety

Problem, context, environment, status

I had around 100 to 150metres of exposed wharf edge with no physical barrier in place to prevent vehicle access or to demarcate the non pedestrian area. Problems were CEMEX not being the landowner and access required to wharfedge by stevedores and ABP staff.

Resources: [IMG_2526.JPG](#)



IMG_2526.JPG

Description of the initiative

I remembered a visit I had to concrete products at Wick as part of my role and business familiarisation back over 19 years ago where I had a tour of Wick products with Sue Townsend. I was aware of multiple sites in Ready-mix and Aggregates that had previously sourced 'lego blocks' externally at a significant cost and used them for demarcating areas. I remembered from my visit to Wick they used to have waste concrete moulds. I spoke to Sue who willingly agreed to start producing the Jersey blocks for us at Swansea.

The blocks were delivered and put in place by a local haulage contractor FG Bond who Wick products used. All this managed to happen by myself reaching across different business areas within CEMEX with full support from Sue Townsend. We only had to pay for delivery and placement costs and it offered us a great solution to the problem at a very low cost using waste concrete. We have since discussed another batch to be

delivered to our CEMEX Cardiff wharf for similar uses and with other boundary demarcating purposes.

Resources: [IMG_2544.JPG](#)

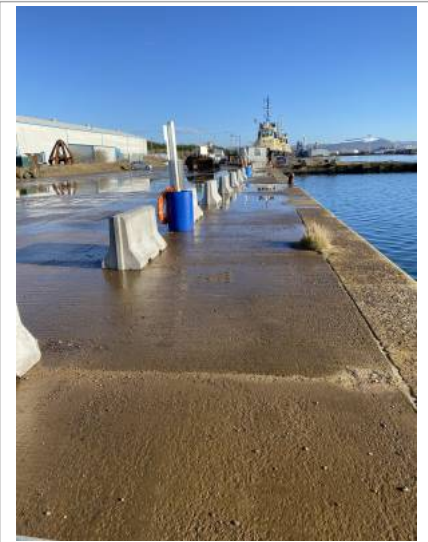


IMG_2544.JPG

Expected benefits

Movable edge protection allowing safe access for Stevedores and Port Staff without fixed structures requiring permission of third party site owner. Can be handled by forklift or telehandler for placement around site and for ease of movement during cleaning/housekeeping.

Resources: [IMG_2537.jpg](#)



IMG_2537.jpg