



ENVIRONMENTAL BRIEFING

Biffa Waste – Escalation Contacts

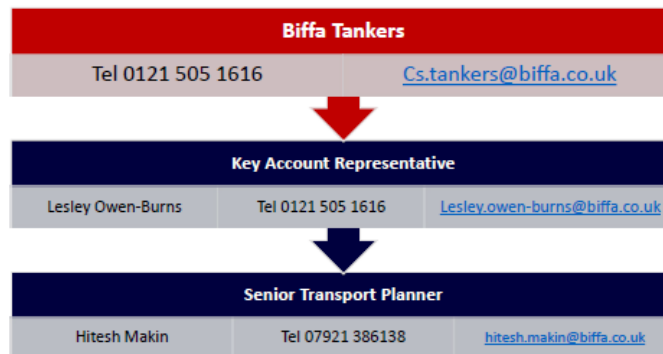
Introduction

Biffa provide non-hazardous waste management for most of our sites. If there are any issues with Biffa services on your site please use the escalation charts below. CS Team 7 escalation to be used for general waste and recycling waste queries. Tankers escalation to be used for any waste tanker related queries.

CS Team 7 Escalation Chart



Tankers Escalation Chart



As a quick reminder – please ensure that NO Hazardous waste is disposed in Biffa General Waste or Recycling Bins.



Key Points

- Please utilise the escalation charts to resolve issues with Biffa Services.
- Please ensure that waste is correctly segregated between General Waste and Recycling Waste bins.
- Please ensure that hazardous waste, e.g. oils & oily rags etc, is not disposed in the General Waste or Recycling Bin.

For further details or information, please contact a member of the Sustainability Department.