

CEMEX UK NEWS



Welcome to UK News 29th June 2023
your weekly update from around Cemex UK

View UK News on: www.cemexuknews.co.uk

You can also follow us on our
social media channels



HEALTH & SAFETY

UK Cement Supply Chain Achieve 3 Years ZERO LTIs



Congratulations to the UK Cement Supply Chain team who have achieved Zero LTIs for 3 years.

Dave Hart, Supply Chain Director said: “Congratulations to you and your team on achieving 3 years LTI and TRI free, a milestone of which you should feel very proud given the complexity of the operation. This has been achievable through your continued safety leadership and commitment allied with the close collaboration and engagement with the wider UK teams.

Please take time to recognise this with your team, our drivers and hauliers and continue to make sure we lead by example and ensure safety remains our focus and number one priority each day. Well done.”

LTI milestones demonstrate that ZERO is possible, especially in challenging environments and working processes. With the right level of focus and attention to Health & Safety, our Zero4Life objective can be met and sustained.

Latest Global Safety Alert

SAFETY ALERTS

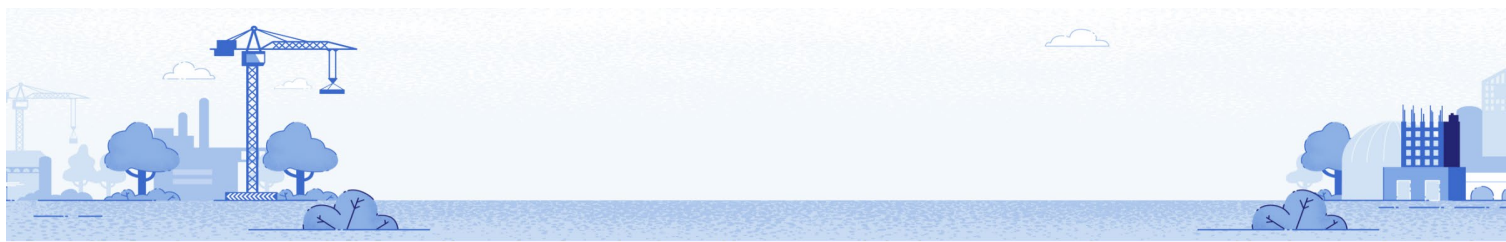


The latest Global Safety Alert describes an incident outside of the EMEA Region, where an employee sadly died when he was engulfed by coal.

Our colleague had been operating a front-end loading shovel, moving coal from stockpiles to a feed hopper, when

for unknown reasons, he left the loader and was engulfed by the coal pile near the “grizzly bar” structure above the feeding system.

The Alert highlights learning points applicable not only to this specific situation, but also stockpiles more generally.



We are also sharing an industry Toolbox Talk from the UK, which can be used to supplement the Alert and reinforce key safety principles associated with the management of stockpiles, which include:

- Managing stockpiles in accordance with methods devised by a competent person in conjunction with the machine operators, having taken appropriate geotechnical advice.
- The daily inspection of stockpiles by a competent person before vehicles work on them.
- Preventing pedestrian access to material stockpiles.
- Coordinating activities so that vehicles and machinery are not adding material to a stockpile when material is being removed.
- Machine operators constantly monitoring stockpiles for signs of slumping, cracking or instability..... any defects should be reported, and appropriate action taken.
- Avoiding faces steeper than the angle of repose of the material, where the angle of repose is the steepest angle at which a sloping surface formed of loose material is stable.
- Restricting the height of the stockpile at the loading out point so it is no higher than the reach of the machine working it.
- Avoiding overhanging faces, as this may cause compacted material to collapse or slip.

Please discuss the Alert with your teams, identifying applicable learning points and display it on relevant noticeboards.

You can find the Alert at the end of this document and on the UK News Download page [here](#).

Cemex Global Protocols require all Fatal Alerts to be communicated and Managers to capture the signature of employees and contractors to confirm they have received and understood the information and the control measures they need to adopt. In addition, operations are invited to observe a one-minute silence in memory of the deceased at the time of discussing a Fatal Incident Safety Alert.

Before starting any new task always **STOP, THINK... & CHECK** it is safe, and always **STEP IN** if you see anything unsafe.

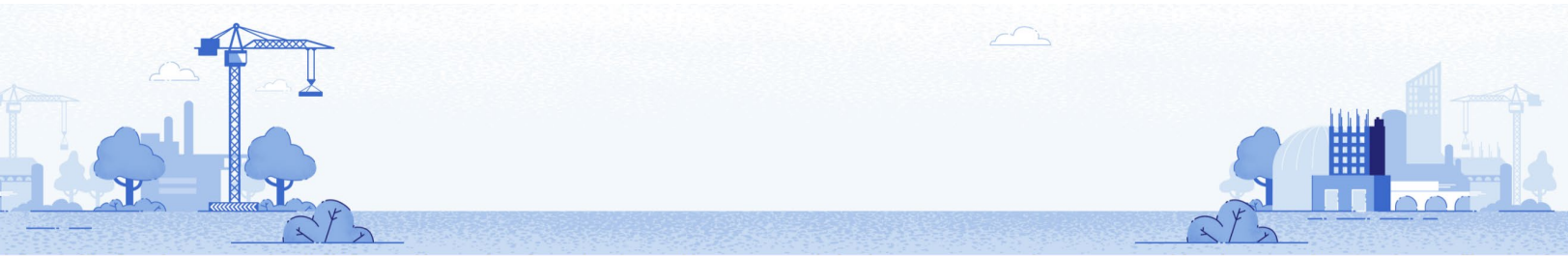
Keeping Us Safe on the Railways



This week is Rail Safety Week, which is an industry-wide and industry-led initiative focusing on rail safety for all. Rail Safety Week aims to bring rail safety to the forefront of people's minds across a dedicated week, keeping safety firmly in the spotlight and sharing ideas and best practice across industry colleagues.

To support this, we are sharing details of a free Railway Guardian app which we encourage you to download to your phones. This app is an all-in-one safety app from the British Transport Police (BTP). It allows you to report crimes or concerns on the rail network, share your journeys with trusted contacts, and get access to news, guides, or support.

The BTP wants everyone to feel safe and empowered when travelling, and by downloading the Railway Guardian app, help is always at hand if you need it.



Small actions can all play a part in making everyone's journey a good one, such as:

- downloading the app
- reporting crimes and concerns
- learning about acceptable behaviour on the network and setting an example
- being an active bystander

You can read more and download the app [here](#)

Rail and Sea Team Collaborating for Rail Safety Week



This week the Supply Chain Rail and Sea team were joined by Dave Hart, Supply Chain Director, and the Victa ground staff at Dove Holes quarry. They were also joined by representatives from the freight operating companies and Network rail as part of Rail Safety Week, which was an excellent way to collaborate effectively.

They received great feedback from Network Rail on the Health & Safety standards on site and the safety leadership of our employees.

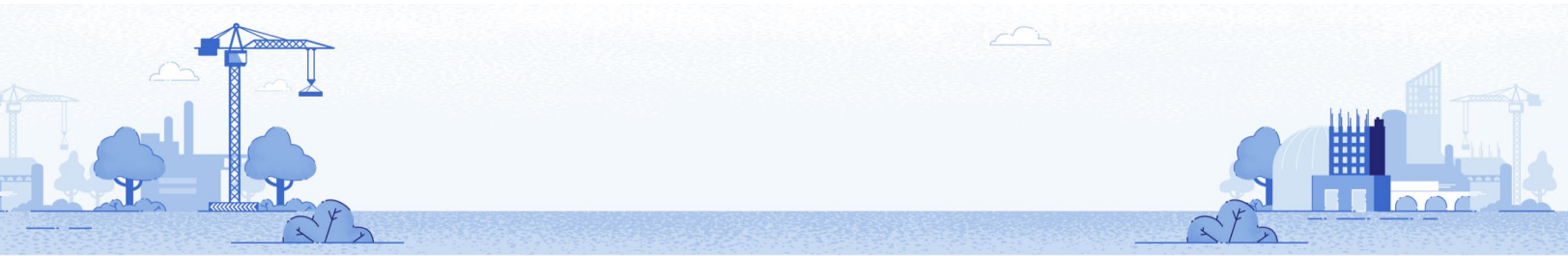
Congratulations McAleer & Rushe



This week Martin Simmons, Sales Executive Readymix, was delighted to present the winners of the Cemex UK Partners in Safety Q1 award to McAleer & Rushe at their site at Park Lane Liverpool.

Martin said: "The whole team has demonstrated a fantastic dedication to Health and Safety throughout their project. From controlling vehicle movements and guiding our drivers in and out of site to clear communication between site, shipping and myself, the project has run without any issues and is a deserving winner of the award."

Thanks again McAleer & Rushe for keeping our drivers and staff safe."



Do You Know Your Body Mass Index (BMI)?



BMI is used to categorise people's weight. BMI charts are mainly used for working out the health of populations rather than individuals.



A high or low BMI may be an indicator of poor diet, varying activity levels, or high stress. Just because someone has a 'normal BMI' does not mean that they are healthy.

BMI doesn't take account of body composition, for example, muscle, fat, bone density. Sex and other factors which can impact your weight can also lead to an inaccurate reading. As such a BMI calculation is not a suitable measure for some people including children and young people under 18, pregnant women and athletes.

BMI Ranges

Your BMI will fit into one of five bands:

- **under 18.5** – This is described as underweight.
- **between 18.5 and 24.9** – This is described as the 'healthy range'.
- **Between 25 and 29.9** – This is described as overweight
- **between 30 and 39.9** – This is described as obesity
- **40 or over** – This is described as severe obesity

Use this easy NHS tool to check your BMI [BMI calculator](#)

Need to keep reduce your BMI? Check out these eight tips for healthy eating: [8 tips for healthy eating - NHS](#)



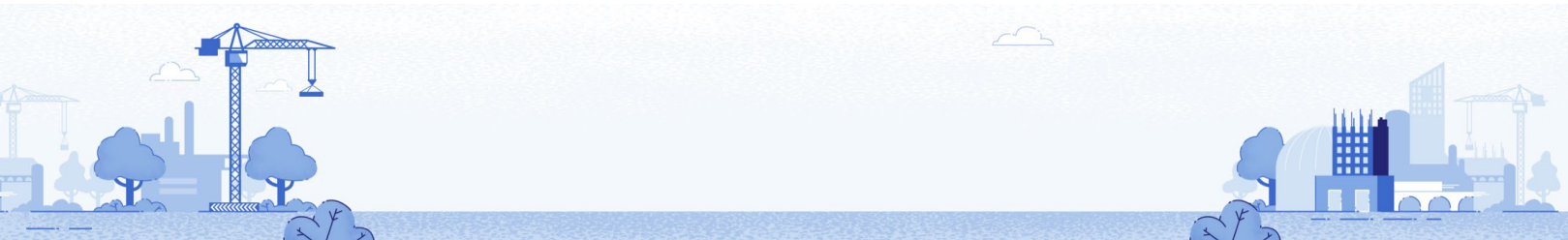
CUSTOMER CENTRICITY

Revision to the British Standard for Concrete BS 8500



Later this year the UK concrete industry will publish a new version of the British Standard for Concrete BS 8500, which will work even harder to move the industry forward in hot pursuit of decarbonisation. In short, the incoming revision to the British Standard for concrete, BS 8500, will allow the expanded use of a new generation of lower-carbon cements.

Decarbonising cement manufacture is a critical element of Cemex's Future In Action Strategy. The revision of BS 8500



will help us to continue to develop our Vertua® brand expansion, and in tandem, focus on sustainable excellence through climate action, circularity, and natural resource management with the primary objective of becoming a net-zero CO₂ company.

Lowering clinker proportions in cement has a direct impact on reducing the amount of carbon produced. A key strategy for reducing concrete's embodied carbon involves replacing a proportion of clinker (a material produced in the manufacture of Portland cement), with limestone and other industrial by-products, using up materials that might otherwise go to waste. The introduction of such an approach is one of many steps that will support Cemex's roadmap to net-zero, along with the increased use of alternative fuels.

The key UK standard for concrete BS 8500 is to be published in two parts. Part 1 is concerned with the method of specifying and provides guidance for the specifier and Part 2 covers the specification for constituent materials and concrete.

The latest draughts of the new additions of BS8500 -1 and BS8500 -2 are available for public comment via BSI's standards development portal until 4th July 2023. This gives the industry a chance to influence the development of these important standards and gather together the widest industry input into these new additions.

Cemex will be working closely with customers and with the MPA to ensure that the revised standards are communicated clearly and consistently. More updates on the revision to BS 8500 will follow and will soon be available on our website.

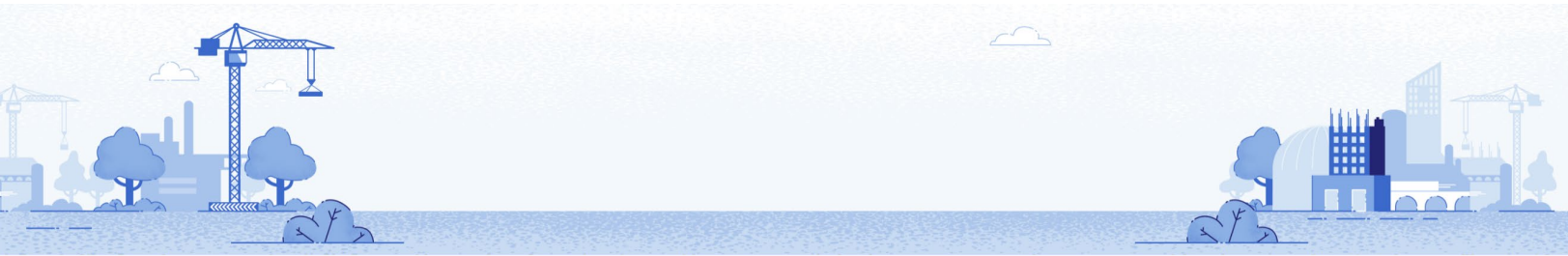
Key Customer Visit to Cement Plant



Recently, the Cement team welcomed our partners from H+H Ltd, one of our key external Cement customers, to our Rugby Cement plant.

Together the group enjoyed an open and transparent discussion about our shared passion for developing more sustainable operations.

We are excited to collaborate together further to communicate the necessity of lower carbon cements for the construction industry.





Vertua® Has Evolved!



In 2020 Cemex UK launched the UK's first ready mixed concrete that was a CarbonNeutral® product – our Vertua® Low Carbon Concrete Range.

Cemex is committed to global sustainability goals. That's why the Vertua® brand has now EVOLVED since the original launch!

Vertua® is now not just lower carbon concrete, it is a portfolio of sustainable products that leverage cutting-edge technology and innovation to help our customer meet their construction needs sustainably.

Vertua® products can help measure the sustainable impact of projects and each product has a fact label that outlines the specific characteristics of its environmental impact and benefits. This can be reflected both in the product manufacturing process and in the useful life of the project.

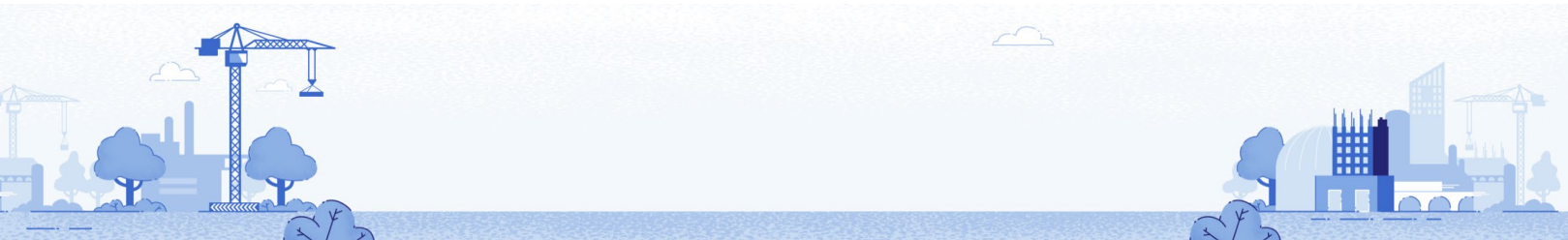
The Vertua® brand now covers five sustainability attributes:

- lower carbon
- energy efficiency,
- water management
- recycled materials
- design optimisation

These attributes have been identified in line with Cemex's dedicated climate action strategy, Future in Action, which targets operation as a net-zero company globally by 2050.

Coming next week

Look out for our latest In the Mix podcast next week where Mike Higgins, UK Technical Manager, explains more about our Vertua® portfolio of sustainable products.



Marine Team Supporting Mental Health Programmes in Hampshire



Members of the Southampton Marine team recently volunteered at Solent Mind to dismantle a disused garden shed, painting and digging out additional space for flowerbeds.

Solent Mind, the leading mental health charity across Hampshire, has set out to develop a horticultural therapy programme to assist users who are on the mental health recovery journey. Not everyone in the centre of Southampton has access to a garden or is able to travel easily to green spaces, so the garden at Solent Mind is being transformed into a space that is suitable for peer-led horticultural therapy.

Kurt Cowdery, UK Marine, commented: “It’s great to see the work that Solent Mind does, spending valuable time investing in the local community and providing support and a safe place for people to visit and use I am very proud of the Cemex Marine team, led by Susie Taylor, for deciding to support this cause. It’s been well planned, managed and very enjoyable, well done.”

Susie Taylor, Crewing Logistics & Training Coordinator, said: “The last few years have been a challenging time for everyone, and lockdown was especially difficult for people who didn’t have access to a private outdoor space. I was keen to channel my passion for gardening, the natural environment, and exercise, (all of which have helped improve my own mental and physical wellbeing over time) into a volunteer project that the whole of the Marine team could get involved in.

Kate and the staff at Solent Mind were very welcoming and treated us to Danish Pastries a tea break, which was very kind of them! I’m sure the garden will be enormously beneficial to all those who will use it and I’m glad we were able to help make the space a more inviting place for both staff and clients in the future.”

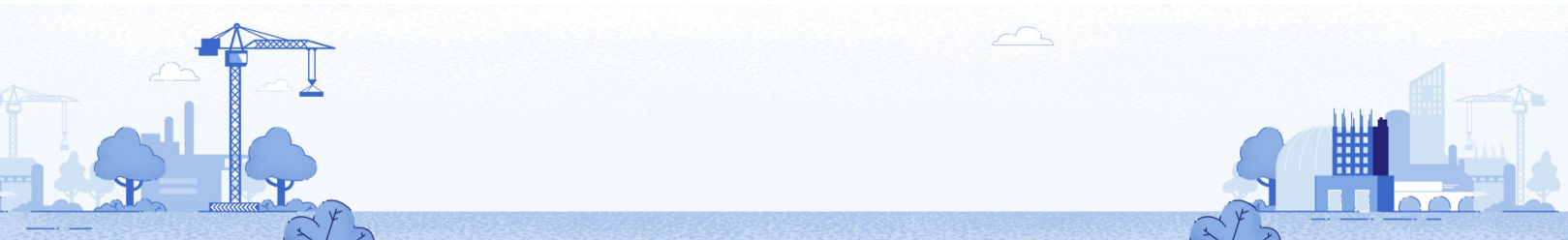
Kate Steaggles, the Networks and Training Co-ordinator (Peer Support), stated in response to the Cemex team support: “Thank you very much for all your hard work helping in our Peer Support office garden at 28 the Avenue over the last couple of weeks. What you have done has made a big difference.

It helps us in beginning to make our garden a calm space where staff, volunteers and service users can all reconnect with nature to help their wellbeing.”

Some Facts about Solent Mind

Solent Mind runs Peer-led recovery services in Southampton and across Hampshire. The peer Supporters are those with lived experience of mental health challenges who help people currently struggling in their mental health recovery. This can be on a 1-1 basis or in groups. The Peer Supporters work within the Primary Care Networks- in the GP surgeries and Community Mental Health Teams.

Solent Mind has several open spaces along with referral groups to support people around Southampton. Solent Mind also leads in the provision of Improving Access to Psychological Therapies (IAPT) services in Hampshire through the iTalk service, which also offers Peer Support.



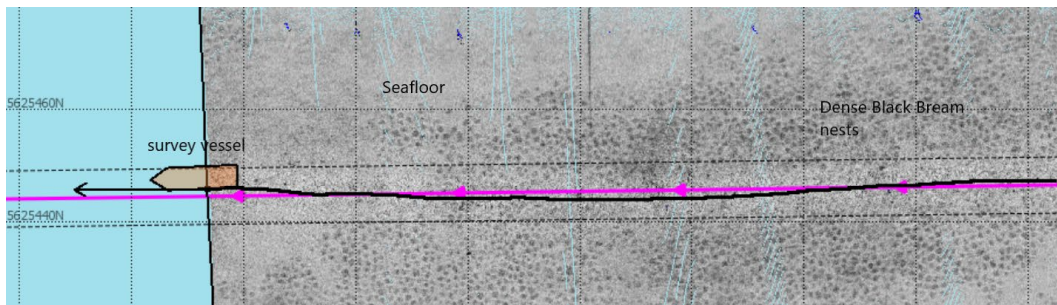
UK Marine Annual Fish Nesting Monitoring Survey



Black Sea Bream is a marine fish that nests and spawns on the seabed off the south coast of the UK. One spawning area is located close to one of Cemex's Marine Licence extraction areas off the Sussex coast. There is a Marine Conservation Zone (MCZ) in place, and we arrange the monitoring of the nests every year to ensure our activity is not having a detrimental effect.

The first and second phases of this year's Black Sea Bream nest survey have been completed by environmental consultants, ABPmer. During the first phase, a survey vessel runs across parts of the MCZ and geophysical sensors generate an image of the seabed tens of metres across.

Black Sea Bream create nests by moving sediment to expose the underlying bedrock on which they lay their eggs. Changes in backscatter between the sediment and bedrock show up as contrasting shades. Dense nests have once again been identified (the dark dots on the image), each measuring 1m to 2m across.



The second phase involves lowering an underwater video camera into the water column and visually reviewing nests observed in the geophysical data.

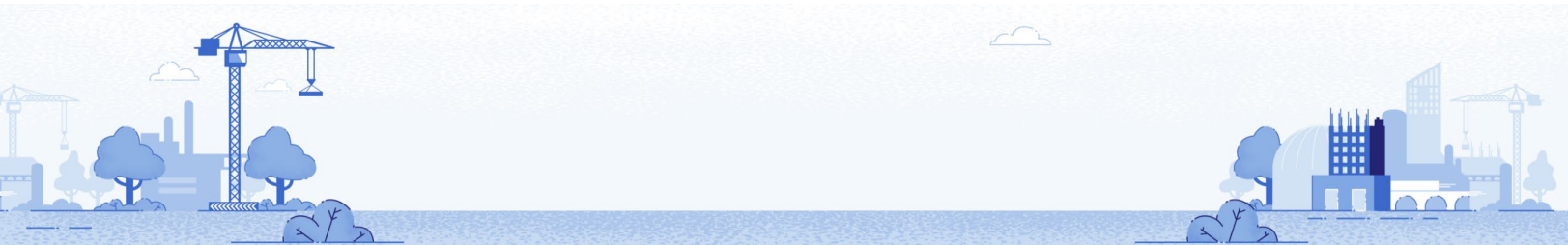
Quarry Garden Competition

ATTENTION all Quarry Managers!



Are you working on an active quarry? Would you like to create a wellbeing space outside your site office for you and the rest of the quarry staff to enjoy? A space that can also help fight the decline of biodiversity. We are offering nectar rich plants along with a water butt for you to do just this on your quarry!

The Cemex/RSPB partnership have identified £200 worth of peat-free, nectar rich planting which every quarry site can apply for by 31st July 2023. Along with the planting we will supply a 250-litre water butt to help you



reduce water use and keep your new wellbeing garden looking healthy. We will organise delivery of plants and water butt to your site to get you started.

In return we ask that you **build planters using recycled materials** from your site using a little Cemex knowhow! For example, old tyres or crates can be made into planters.

Soils can be taken from the surrounding area. Please use peat-free compost (such as Silva, New Horizon General Purpose) if you are using additional compost.

The Competition

Make sure you take photos of your planters as we will be running a competition, judged in Spring 2024, for the Best Use of Recycled Materials and Best Overall Garden. Prizes include a picnic bench, garden tools and bird feeders.

We would love to see photos of you receiving the plants and water butts, building the planters, planting them up and then sitting back and reaping the benefits of all of your hard work! Send your photos to the Communications team at gb-communicationsandpublicaffairs@cemex.com

Prizes:

Best use of recycled materials

Prize: Gardening tools or bird feeders

Best Overall Garden

Prize: Picnic Bench

How to Enter:

Send an email to gb-communicationsandpublicaffairs@cemex.com with all of the following information:

Your Name:

Quarry Name:

Quarry material (Sand and Gravel/Chalk/Limestone):

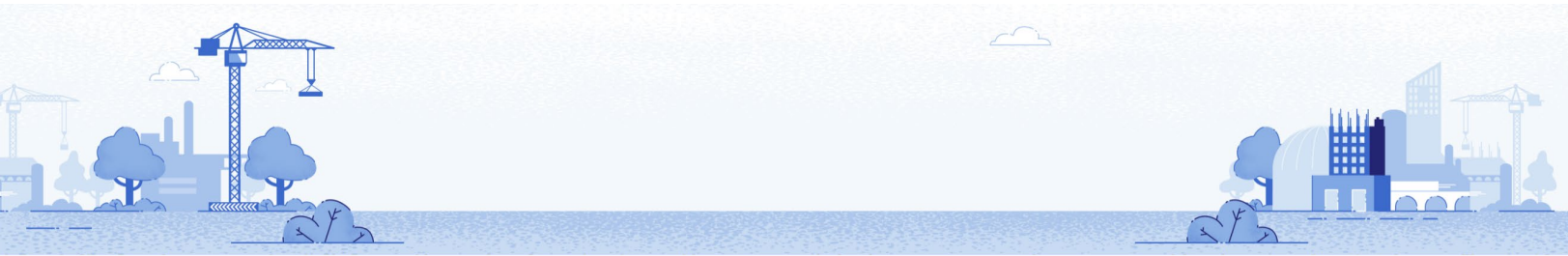
Delivery location address:

Days of the week you can receive deliveries:

Contact name for deliveries:

DEADLINE: 31st July 2023

If you have any questions about this competition do please get in contact via gb-communicationsandpublicaffairs@cemex.com





EMPLOYEES

Celebrating Day of the Seafarer



**DAY OF THE
SEAFARER**
— 25 JUNE —

25th June marks the UN International Day of The Seafarer. This is organised by the International Maritime Organisation and aims to increase awareness among the general public of the world's 1.5 million seafarers for their unique, and all-too-often overlooked, contribution they make to the wellbeing of all of us. The idea is to recognise the contribution of seafarers to global supply chains, without which we would not have many of the resources and goods which we do.

We want to take this opportunity to thank all those who work on our ships and in the Marine team; thank you for your vital work to source aggregate and safely deliver it to our customers.

To celebrate our Marine colleagues, we have created a short slideshow video featuring our ships and many of the people who work on and with them over the past 12 months.

Here is a short video to say a big thank you: <https://web.microsoftstream.com/video/4e936e28-e1d8-40de-8430-1fb637c8cc8d>

Thanks For Your Effort Winner – May



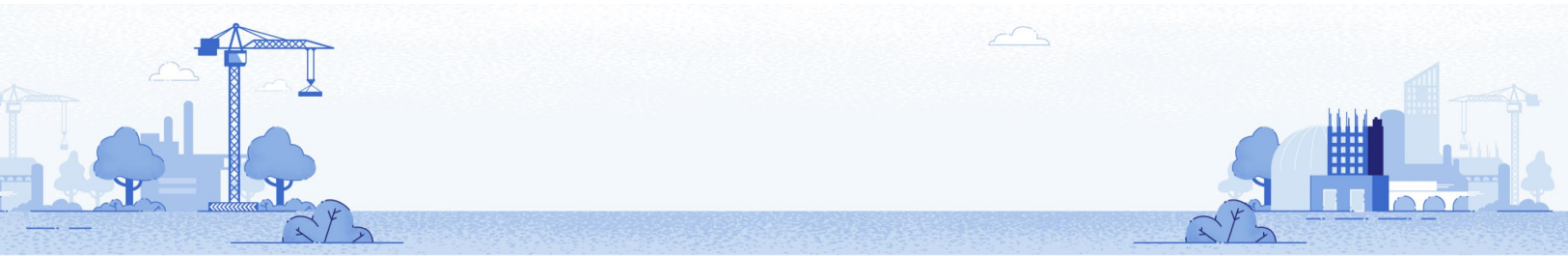
Congratulations to the May 2023 Thanks For Your Effort winner - **Adrian Radnor, Plant Manager, Hereford Readymix.**

Adrian won the award for being a role model who consistently demonstrates and shares his knowledge; passion and experience for Cemex operations with new and existing colleagues.

Adrian was nominated for the Thanks For Your Effort award by Nigel Hinton, Plant Manager, Readymix Midlands. Nigel explained:

Adrian Radnor has been employed with Cemex Readymix for over 16 years and the knowledge, passion and experience he has for his appointment is truly astonishing. I have been simply blessed to be co-managing the Hereford plant with Adrian as he is simply outstanding. I have been privileged to have Adrian as an instructor and mentor during my first few weeks and indeed still continuing and can say without reservation that the knowledge, experience, passion and true commitment Adrian has demonstrated and instilled in me is first class.

Adrian is hard working, fully committed and unreservedly loyal to the Cemex standards, and in my opinion a true role model for any aspiring Plant Manager who wants to be the best they can. The reputation of Cemex has been well and truly reinforced and maintained by Adrian's approach, actions



and results. Cemex is a well-established brand throughout Hereford. This is down to the hard work, dedication and selfless commitment constantly demonstrated by this outstanding Cemex employee.

Thanks For Your Effort Nominees – May



More thanks go to our fantastic colleagues nominated for the May Thanks For Your Effort award for showing exceptional dedication and going above and beyond their day jobs. They are.....

Paul Crowther, Product Standards Manager and Liam Cranfield, Technician at Urban Solutions: Rail

Cemex LabExperts were completing a commercial circular economy project for Manufacturing Technology Centre evaluating potential incorporation of RCA into sleepers. As part of the project, the customer asked if full scale sleepers could be produced as example pieces. Working as One Cemex Paul and the team at Rochester hand mixed sufficient material to produce the three sleepers and helped produce an explainer video for MTC. The customer is a catapult centre that regularly accesses government funding to bridge academic and industry projects. The efforts of Paul and the guys helps fortify our relationship and LabExperts has been engaged for their next construction materials project.

Berkswell Quarry team

For dealing so quickly and efficiently with a small cash sale – the customer was delighted with the team’s professionalism and will likely result in repeat business.

Third Parties Occupying our Sites Without Permission



The Cemex UK Legal team have been working with our Estates and Security teams to repossess one of our sites as the company that took occupation more than ten years ago, refused to leave when asked to do so. Unfortunately, they were within their rights to remain in occupation because the

correct form of lease was not put in place at the time.

The process has been long, time-consuming and expensive and we must ensure that it doesn’t happen again. Additional risks and problems arise if the third party concerned deposits material in breach of environmental permits, as liability could lie with Cemex, even though we are not at fault.

Please ensure that Mark Cole or Indrani Hazra-Corte are contacted for advice before allowing a third party to occupy any of our sites even for a short-period.

Your Legal Team Contacts

Vishal Puri (Legal Director and Data Protection Officer) vishal.puri@cemex.com

Mark Cole (Senior Property Solicitor) mark.cole@cemex.com

Indrani Hazra-Corte (Property Solicitor) indrani.hazracorte@cemex.com



Laurence Sheppard (Interim Consultant Commercial Solicitor) laurence.sheppard@ext.cemex.com

Alice Powell (Paralegal) alice.powell@cemex.com

Beth Rattenbury (Personal Assistant) bethany.rattenbury@cemex.com

Find us on Yammer: [UK Legal](#)

The information in this note is for general guidance only. Please contact a member of the Cemex Legal Department if you have a specific concern on any particular legal matter.

Raising Awareness of PTSD



Leon Richards, a haulier for BMD Distribution, was diagnosed with PTSD in 2013 after deployment to Afghanistan. Leaving the army, he embarked on a new challenge in the haulage industry to when he joined BMD Distribution.

BMD Distribution were awarded the Clay contract at Rugby Cement plant in 2019, when Leon was promoted to the Driver Supervisor of the fleet.

Leon decided he wanted to be able to promote PTSD awareness by telling his story using his truck. He started attending charity truck shows to raise awareness and raise money for such worthy causes.

In 2022 he attended Dunstable & Leighton Buzzard Truck Convoy and he won "BEST RENAULT" category. In 2023 he attended the same convoy and for a second year running he won again "BEST RENAULT" category. This year the chosen charities were Scotty's little soldiers & Air Ambulance.

Most recently Leon attended The Shed Truck Show raising money and awareness for the MIND charity. A total of £12,785 was raised for this weekend alone, and again he won another trophy finishing in third place for "BEST RENAULT".

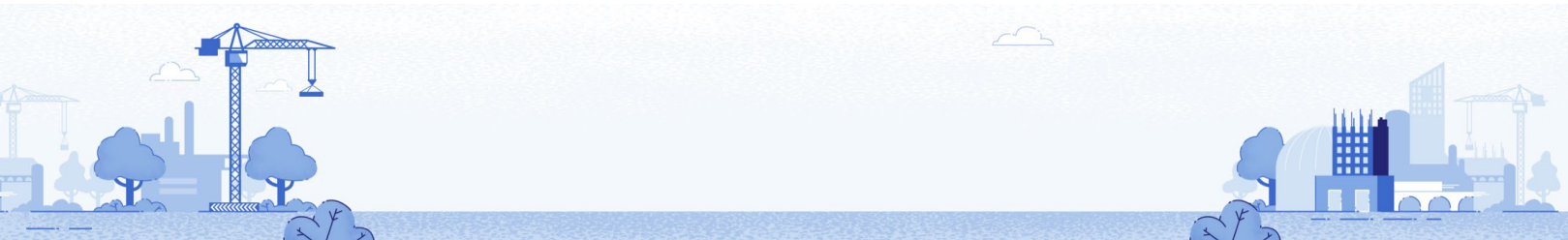
Given this is a working truck transporting raw material back and forth from Southam to Rugby each day the time and effort that Leon puts into his truck tells its own story.

Pawel Celebrates 15 Years Long Service



Congratulations to UK Marine's Pawel Zietarski for reaching 15 years long service. Pawel works as Bosun aboard our Sand Falcon ship and was presented with his long service award by Captain Tony Surey.

Kurt Cowdery, UK Marine, said: "Thank you Pawel for all your hard work and commitment, we look forward to your continuing support."



Hamplified Festival is Back



Rugby's annual Hamplified Festival is back!

Hamplified Music & Rugby 7's festival takes place on Saturday, 15th July, at Rugby St Andrews RFC Hillmorton Grounds in Ashlawn Road at 1pm until 11pm.

The event takes place to raise funds and awareness for The Matt Hampson Foundation who support young people seriously injured through sport. Founders of Hamplified and Cemex Logistics Planners, Mark Brightwell and Rob Low, said: "Our inspiration came 12 years ago when our friend and co-founder Andy Smith injured himself seriously playing rugby. Andy found inspiration to fully recover after reading the book 'Engage', written by Matt Hampson after a similar horrific career-ending and life-changing injury while playing for Leicester Tigers."

The festival was created features a fantastic men's and ladies Rugby 7's tournament with top local teams Rugby St Andrews RFC, Rugby Lions, Old Laurentrians and Newbold RFC battling it out for the Hamplified trophy.

Hamplified has always relied on 100% of its acts and organisers to offer their time and talent free of charge in order to raise as much as possible through donations, collections, raffles, auctions and pitch fees etc on the day.

We have also been incredibly lucky to get support from Cemex this year as one of our sponsors. We cannot thank them enough for their partnership for this fantastic local community event. This event has always been well supported by our Cemex colleagues, their families and friends and we welcome them all again for a great day and night of live music and rugby.

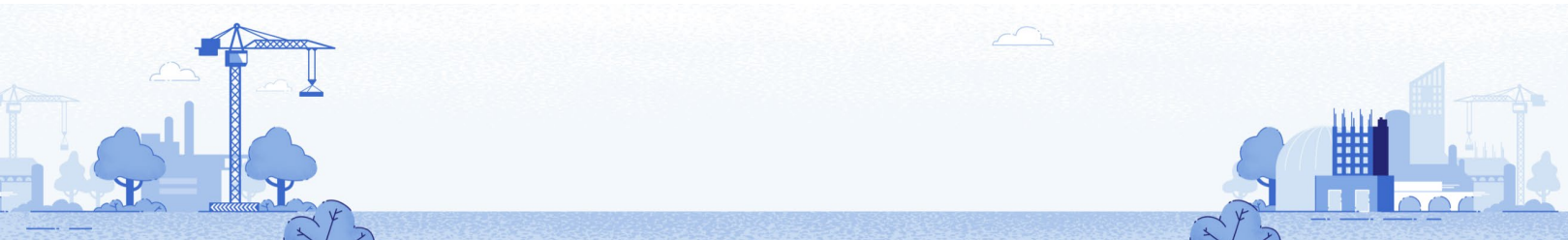
To date, they have raised more than £30,000 since the launch in 2011.

"This year being the rugby bicentenary, we have made sure that it has the best line up of local acts, rugby clubs, food and stalls," added Rob.

Music starts at 1pm with 11 great bands containing several talented Cemex employees! – including: Sunroof, Anomaly, The Skunks, The Shady, The Passerines, The Record Covers, Solid Bond, The Rushmore, Synthmachine, The Jellyheads and Wild Ride.

Rob Lowe commented: "I am certain no other festival gets absolutely to the heart of the community of Rugby taking the people, bands, business, Cemex employees/ families and music supporters with us at every stage which helps our little idea make a big difference."

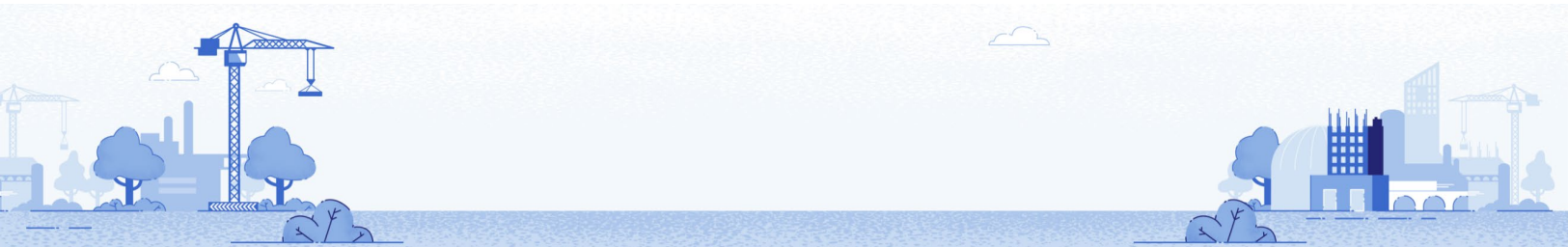
For additional information visit the website www.hamplified.com and sign up to the newsletter or email robert.low@cemex.com for more details.



You can find a poster with more details at the end of this document and on the UK News download page [here](#).

Internal Vacancies

IVC Ref	Position	Company	Location	Closing date
134-06-2023	Shift Foreman	Urbanisation Solutions – Building Products	Rochester	30/06/2023
135-06-2023	Yard Foreman	Urbanisation Solutions – Building Products	Rochester	30/06/2023
136-06-2023	Plant Manager	Materials - Readymix	Ryall	30/06/2023
137-06-2023	Multiskilled Operative	Materials - Aggregates	Jarrow Wharf	30/06/2023
138-06-2023	Operative	Materials - Aggregates	Brighton Wharf	03/07/2023
139-06-2023	Plant Manager – (Fixed Term Contract – 6 months)	Materials - Readymix	Salford	04/07/2023
140-06-2023	Plant Manager	Urbanisation Solutions - Asphalt	Bletchley	05/07/2023
141-06-2023	Technical Systems Administrator	Materials – Quality and Product Technology	Binley	07/07/2023
142-06-2023	Operative	Materials - Aggregates	Ryall Quarry	10/07/2023
143-06-2023	Urbanisation Solutions - Asphalt	Multiskilled Operative/Fitter	Liverpool Docklands	10/07/2023
144-06-2023	Weighbridge Operative – (Fixed Term Employment for Maternity Cover for 12 months)	Materials - Aggregates	Jarrow Wharf	11/07/2023

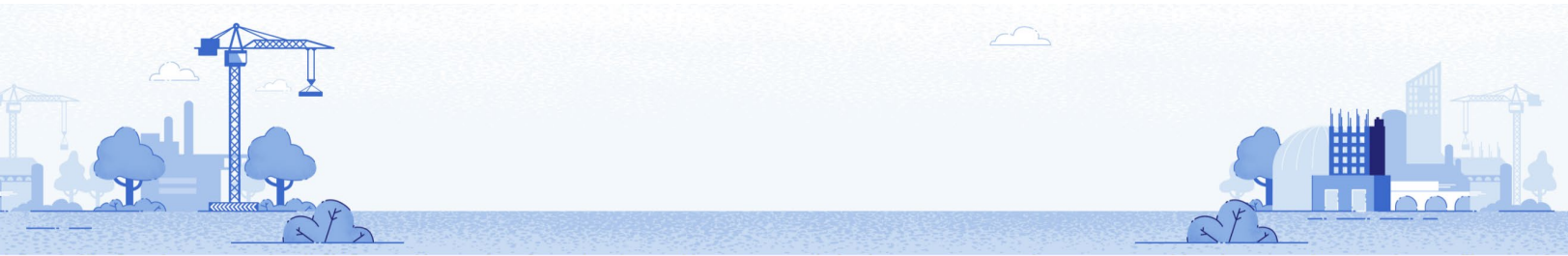


145-06-2023	Multiskilled Operative (Nights)	Materials - Aggregates	Dove Holes Quarry	12/07/2023
146-06-2023	Plant Manager	Materials - Readymix	Burnley	12/07/2023
147-06-2023	Relief Plant Manager	Materials - Readymix	London	12/07/2023

We would love to hear from you for the next edition

To send us a story: either click on 'submit a story' on the UK News website or email gb-communicationsandpublicaffairs@cemex.com

If you can, please include a photo too (taken in super fine landscape setting and saved as a jpeg.) Thank you.



GLOBAL SAFETY ALERT

EMPLOYEE FATALLY INJURED

INCIDENT DETAILS

An employee was operating a front end loader in the coal shed. For unknown reasons he left the loader and became engulfed in the coal pile near the grizzly bar structure for the feeding system. County emergency services arrived and managed the recovery.



KEY FINDINGS

- The employee, who had approximately 1 year experience in the plant, was working on the night shift and was operating the front end loader to move coal onto the grizzly in the coal shed prior to the incident.
- There was significant inventory of coal in the storage building and limited separation between the stockpiles and the feed pile on the grizzly bar structure.

MANAGERS – KEY POINTS TO CHECK

- Raw material and fuel stockpile storage areas are inspected regularly and controls in place to prevent pedestrian access to these areas. This should also include delivery drivers who may be present in these areas.
- Formal procedures have been developed for maintaining all material stockpiles at the angle of repose and controlling vertical faces that could slip away.
- That raw material and fuel stockpile storage areas have sufficient illumination and there are overhead visual markers to indicate the location of ground level grizzly feeders.
- Establish formal procedures when performing maintenance on feeding systems, that includes controls to isolate material stockpiles from the work area.

ALL PERSONNEL – ACTION TO TAKE

- Do not attempt to walk on any material stockpile, as these are inherently unstable.
- Never park mobile equipment or other vehicles near material stockpiles, as material can unexpectedly slip away.



Look after yourself
and each other



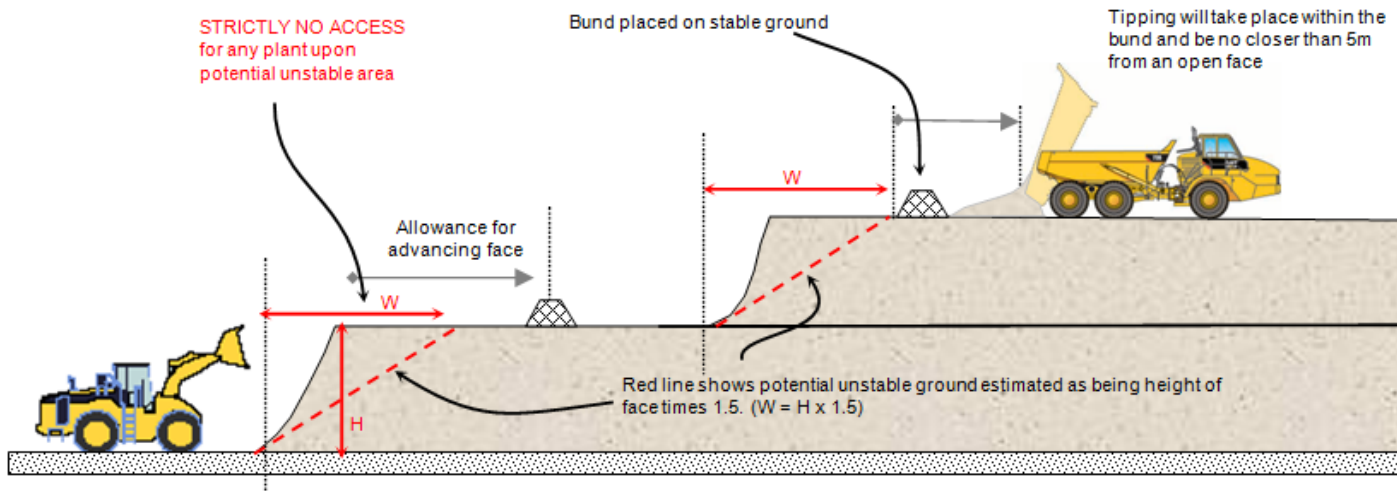
Safe
Systems

Managing Stockpiles

Management of stockpiles

Pre-commencement Planning

- Prior to work commencing, a competent person appointed for the purpose will agree the method of safe construction with the machine operator
- Shown below is an **example** of a safe method of work. QNJAC recommends you take competent geotechnical advice which must take into account local factors when devising safe working methods.



Inspection and Monitoring

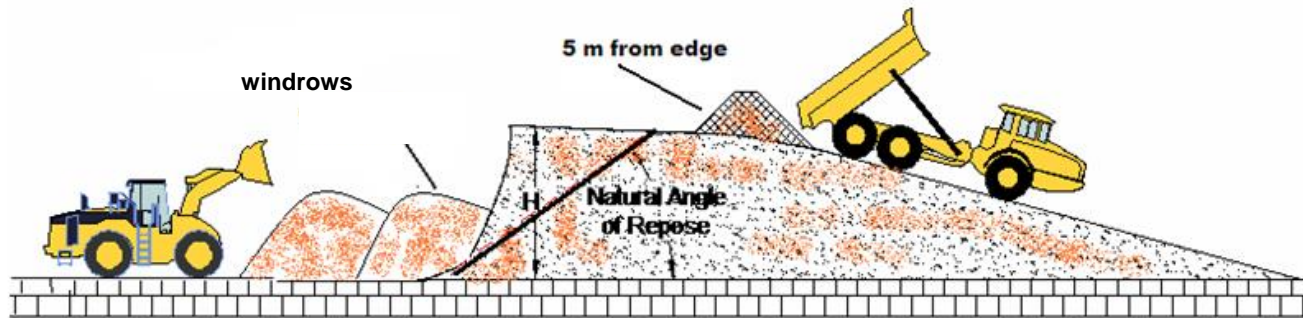
- A competent person should be appointed to inspect stockpiles and tips before vehicles work on them, and ensure that vehicles cannot gain access to areas where material is being actively removed. This competent person should ensure that activities are coordinated so that vehicles and machinery are not adding material to a stockpile when material is being removed.
- This appointed competent person should inspect the stockpiles and actively worked tips at least once per day and report any defects. Any significant defects found should result in work being suspended and the defect rectified before work recommences.
- Stockpiles and tips not being worked should be inspected by a competent person at least once per week and take action against any significant defects identified.
- The machine operators should constantly monitor the stockpile or tip for signs of slumping, cracking or instability. Any defects should be reported and appropriate action taken.
- Inspections should consider whether the bunds and access routes comply with the design (i.e. they are in the correct location to allow for loading out and maintaining face stability).
- Records of tipped material must be kept.

Layout

- Ideally a stockpile should be closed for tipping whilst loading out is taking place. If this is not possible, then the area affected by the loading out must be isolated from the stockpile access routes and tipping area.
- Materials will only be stockpiled in designated areas as identified on the quarry plan or agreed by appropriate site management.
- When creating a stockpile the access points for plant should have the ability to be readily closed off.

Stockpiling Material

- When stocking material always place material in windrows at the base of the pile this is important when the loading face is near vertical. Doing this provides support at the base of the stock pile. When material is to be tipped on top of the stock pile always maintain a safe distance from the edge, behind the angle of repose, leaving sufficient edge protection in place. If material has to be pushed off the end of the pile this must be carried out by a front end wheeled loader or Dozer (it may also be possible to pull material down using an excavator). Shown below is an **example** of a safe working method. QNJAC recommends you take competent geotechnical advice which must take into account local factors when devising safe working methods.
- (NB: Angle of repose – the steepest angle at which a sloping surface formed of loose material is stable)



Loading out of materials

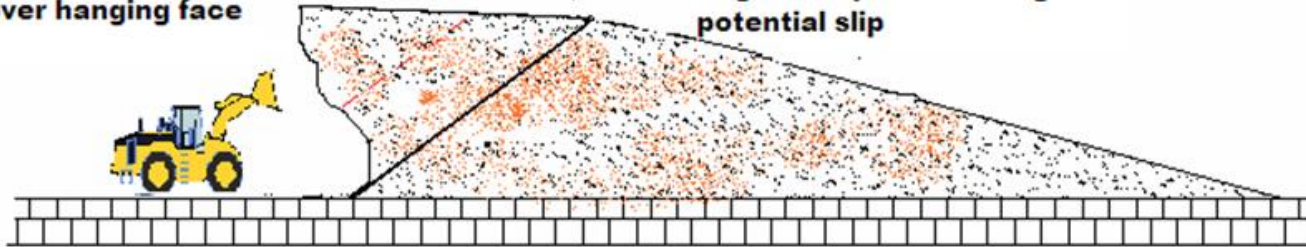
- Faces steeper than specified in the design should not be allowed to form. In the absence of any competent geotechnical advice, faces should not be any steeper than the angle of repose of the material in the stockpile/tip.
- The height of the stockpile at the loading out point should be no higher than the reach of the machine working it.
- If, at any time, the height of the loading out point is greater than the machine working it, the stockpile should be benched in accordance with the diagram shown at the beginning and end of this talk.
- A stand off in front of the advancing stockpile face should be maintained at all times. The exact distance should be determined by taking competent geotechnical advice.

Loading from a stock pile

- Never dig under an overhanging face. This can cause compacted material to collapse or slip. If a face becomes steeper than the design or the angle of repose of the material, or becomes overhung then loading must stop from that area immediately. A sufficient stand off should be placed in front of the face to prevent access and to catch any collapsed material. The face will have to be dressed to its natural angle of repose using an excavator.

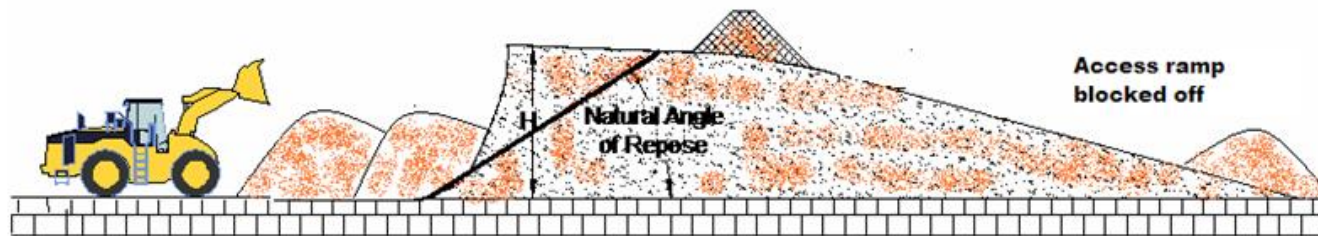
**Never dig under a
over hanging face**

**Angle of repose showing
potential slip**



Edge Protection and Stand-offs

- Sufficient edge protection must be in place when access is required for stocking out material, a minimum of 1.5 metres or the radius of the largest machines wheel. If the edge protection has been lost due to loading from the pile or the stock pile will not be accessed for a significant time, then the access roads should be blocked off at the bottom. Edge protection will have to be constructed when access is next required

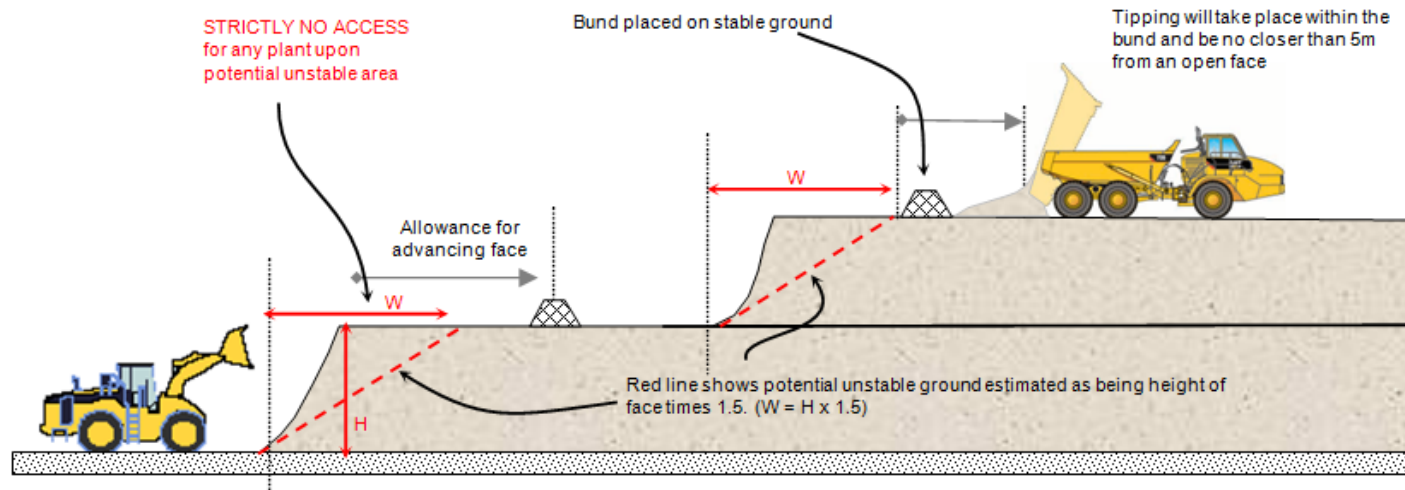


Placement of materials

- Materials should be spot tipped as far from the edge as practical. When undertaken by a dumper, placement should be made a safe distance from the edge. Competent geotechnical advice should be taken to specify this distance. This is to prevent instability of the stockpile as weight transfers to the back axles whilst unloading.
- Spot tipped material should then be pushed over the edge by a dozer or shovel.
- **End tipping over the edge is strictly forbidden.**
- Tip material will be pushed by dozer or loading shovel, up and over the face to maintain a bund between the machine and the open edge.
- Work should not start after a break without an inspection of the face for signs of slumping, cracking or instability. Any significant defect should be rectified before work re-commences.

Conclusion

- Remember this **example**.....
QNJAC recommends you take competent geotechnical advice which must take into account local factors when devising safe working methods.



ENTERLUDE & RUGBY ST ANDREWS RFC PRESENTS

Saturday July 15th 2023

HAMPLIFIED

Live Music & Rugby 7's festival

SUNROOF - THE PASSERINES - ANOMALY -
THE RECORD COVERS - SYNTHMACHINE -
SOLID BOND - THE SHADY -
THE RUSHMORE - THE SKUNKS -
THE JELLYHEADS - WILDRIDE

Official energy supplier:



GENERAC

Free Entry

Hambo Foundation
donations welcome

BBQ - WOODFIRED PIZZA - OUTDOOR BAR

- FAMILY ACTIVITIES - RAFFLE & STALLS

Rugby 7's

Starts at 10am
Live music 13pm



Raising funds and awareness for the
Matt Hampson Foundation supporting
young people injured through sport.



Hamplifiedfestival

hamplifiedofficial

HILLMORTON GROUNDS, ASHLAWN RD, RUGBY CV22 5QQ WWW.HAMPLIFIED.CO.UK