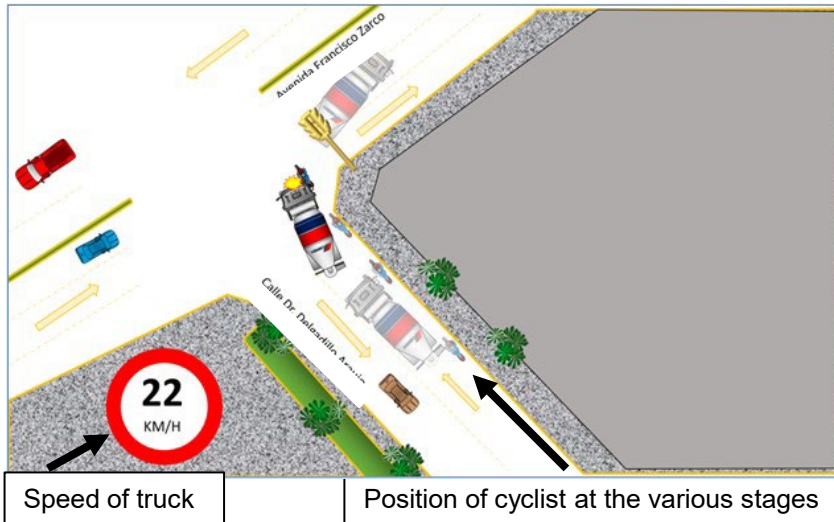


GLOBAL SAFETY ALERT

CYCLIST FATALLY INJURED

INCIDENT DETAILS

A readymix truck driver had stopped for a red light at a road junction and when the light turned green, he proceeded to make a right turn. Without the driver noticing, a cyclist had approached on the inside of his truck with the intention of going straight ahead and as the truck turned it struck the cyclist.



KEY FINDINGS

- The cyclist could have been seen in the truck's side mirrors on the approach to the junction and the front corner 'blind spot' mirror just before the turn, but the driver says he didn't notice anything.
- Other vehicles were in the close vicinity, including a motorcyclist that overtook the truck from the left lane and the truck driver's attention may have been distracted towards them instead of the area of road for the right turn.
- The truck was fitted with side warning sensors that are activated when the indicator is used to make a turn, but the driver did not indicate and therefore the warning device was not operational during the manoeuvre.
- The cyclist wasn't wearing high viz clothing or a protective helmet, as required by local law.

14th July 2023

SA 2023 / 5

MANAGERS – KEY POINTS TO CHECK

- All drivers are trained in the precautions to take to help safeguard vulnerable road users and awareness raising campaigns are regularly put in place.
- VFL exercises by leaders include discussions about vulnerable road users, the precautions to take and the need to always use vehicle safety features.
- Effective maintenance, pre-start checks, and remediation processes are in place to help keep the truck and safety features in good working order.
- There is an ongoing strategy to implement our CEMEX model to help protect vulnerable road users



ALL PERSONNEL – ACTION TO TAKE

- Always be alert to vulnerable road users, especially at junctions, when making turns and during times of congested traffic.
- Before making a turn, always use your indicator and check (and check again) that the arc of the turn is clear for you to safely proceed.
- Always make full use of the vehicle safety features that are provided. They are there to help you and others on the road. If you have any defects, report them to your supervisor immediately.
- If you use a bicycle yourself, always wear high viz clothing (and a helmet) and never attempt to manoeuvre along the inside of vehicles, because you may not be seen. Please alert your family and friends to this as well.