



Managing Stress and Pressure at Work

Stress can be a misused word. In our busy working day we often refer to the day to day working environment and all that it entails, as stress, when we actually mean pressure. We are under pressure to do our job well, to deliver on our commitments, to meet deadlines and to cope with the ever changing demands on us. This is normal within the working environment and the working day.

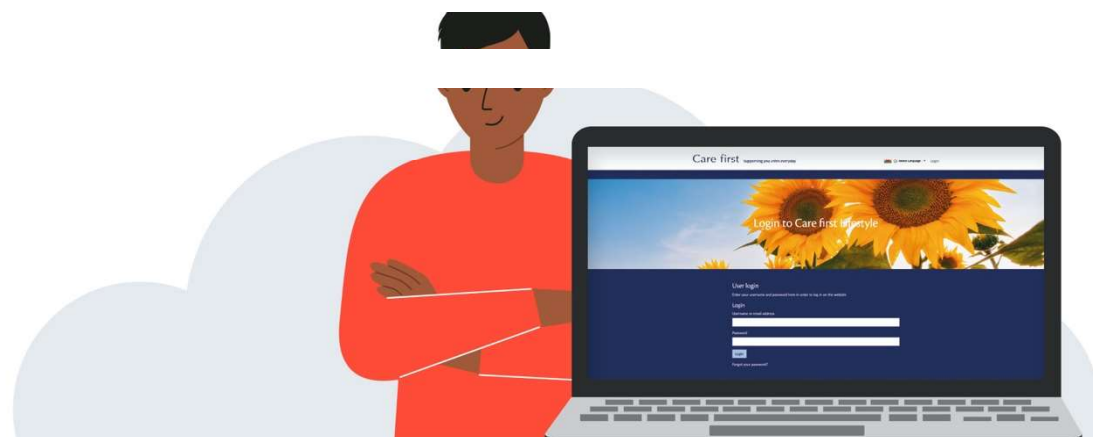
We need a certain amount of pressure to energise and motivate us. It helps us get things done!

Stress is different from pressure. Stress is an on-going pressure that keeps building to a level where day to day work may become unmanageable. This can result in increased absenteeism which in turn may add pressure to those still working. When you feel you are struggling and under pressure, it is important to speak to your manager and explain how you are feeling, and together, look at ways of improving, where possible, your working pattern, your planning and organisation.

There are many ways in which your manager can help and support you, so do speak with them and give them the opportunity to help.

Existing mental health issues can also become a source of stress in themselves, for example, those living with an anxiety disorder and/or depression can be more prone to stress as they try to manage their day to day conditions.

Those who are perhaps more vulnerable are more likely to develop mental health issues and illnesses when high stress levels are present. So, given that, what can we do about it? The key is to help people examine the factors that make them vulnerable and encouraging them to look for positive ways to change them.





Care first Webinar Article

Helpful coping strategies

- Make time for yourself for positive experiences
- Get enough rest
- Talk to someone
- Take exercise and get fresh air
- Keep hydrated
- Remember you are not alone
- Be kind to yourself

All these things appear so simple, but when one feels overwhelmed it is difficult to see a clear way forward. There is one, we just need to believe that.

More information

If you would like to view the Webinar on **'Managing Stress and Pressure at work'** this is being delivered live on **Friday 26th April 2024 at 12:00**, please use the following link to register for this session

<https://attendee.gotowebinar.com/register/5104440289155116635>

If you are unable to join the webinar live, a recording of the session can be accessed using the same link above after the webinar has taken place.

If you feel you may need some support, you can contact Care first. Care first is a leading provider of confidential, professional counselling, information and advice services. All employees are eligible to use Care first, our services include; telephone counselling, information services and online support. Call Care first on the Freephone number provided by your organisation and you can speak to a professional in confidence.



Get access to the help you need **24/7** with Care first

Care first
Part of **PRIORY**