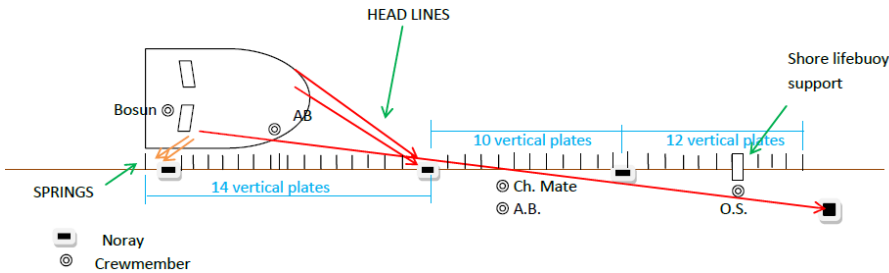


GLOBAL SAFETY ALERT

VESSEL CREW MEMBER STRUCK BY MOORING ROPE

INCIDENT DETAILS

A Crew member of a chartered vessel was struck by a mooring rope under tension during vessel shifting (moving) operations. 3 crew members came onto the quayside to adjust the mooring ropes. The Injured Person (IP) was moving the headline along the quay to a different bollard to allow the vessel to move from hold No 2 to hold No 4, during this move the rope became snagged on a lifebuoy stanchion positioned on the quayside. As the rope tightened, it bent the lifebuoy stanchion over and the rope under tension hit the IP. The IP was bleeding from a head injury and was experiencing pain in the chest area.



KEY FINDINGS

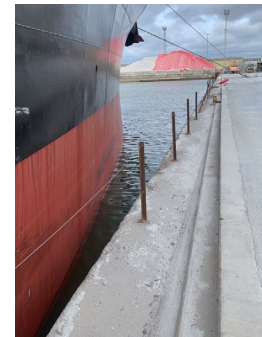
- A fence had been erected along the quay edge by the port operator to provide protection to their contractors engaged in resurfacing the berth. (following this incident, the fence has been removed and lifebuoy relocated)
- The crew member was attempting to keep the mooring rope clear of the fence, when it became caught on the lifebuoy stanchion.
- The mooring rope became caught on the studs that hold the lifebuoy to the post.
- Error / lack of coordination between personnel on the berth and personnel at the vessel mooring station operating winch.

MANAGERS – KEY POINTS TO CHECK

- Measures taken to make one job safer can introduce unintended hazards. Are management of change procedures robust? When a job changes it should be re-assessed.
- Ensure quaysides are clear of any obstacles.
- Co-ordination between line handlers ashore and the mooring team on board is crucial; ensure crew members know the relevant instructions and are adequately supervised
- Additional personnel may need to be introduced to assist with manual handling tasks.
- Good practice would be to paint a line at a safe distance from the quay edge, marked “Lifejackets to be worn beyond this line”

ALL PERSONNEL – ACTION TO TAKE

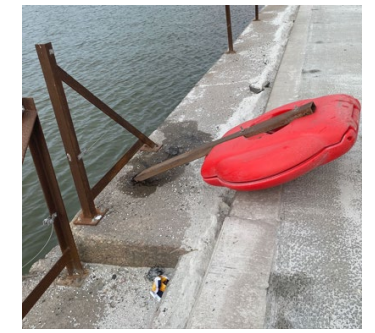
- Shifting operations should be treated the same as mooring operations, i.e. a plan should be formed, and all those involved should be authorised, competent and briefed in the tasks.
- Never stand in the “line of fire”
- Be aware of “snap back”, the whole area can be considered a “snap back” zone while mooring operations are being carried out, both on the mooring deck and ashore.
- Seek assistance with manual handling tasks when necessary.
- Personnel involved in operations close to the quay edge should wear lifejackets.



Fence along quay



Mooring rope caught on bolt



Lifebuoy post bent by rope



Safe Systems



Look after yourself and each other

Mooring Deck Safety Animation

