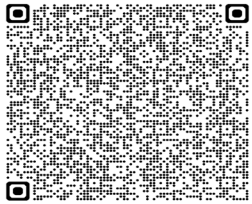


GLOBAL SAFETY ALERT

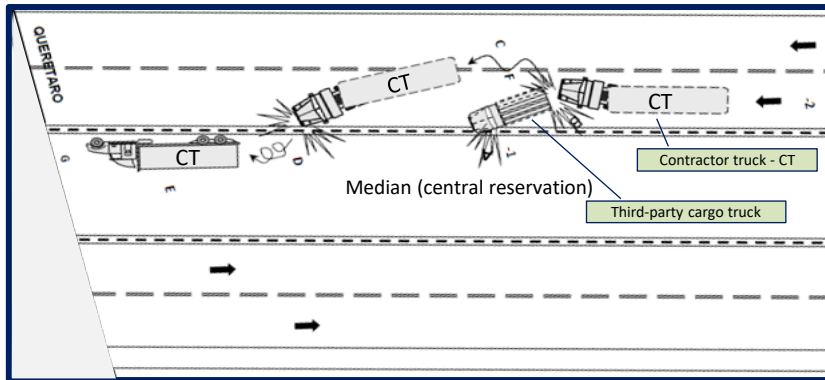
CONTRACTOR FATALITY DURING TRUCK ROLLOVER AND FIRE

INCIDENT DETAILS

A Contractor was travelling in the outside lane on a federal highway with a load of clinker, when he encountered another truck in the same lane ahead. As the contractor tried to pass using the inside lane, his vehicle colliding with the rear right side, causing the contractor to lose control and his truck rolled over and caught fire. The other truck caught fire as well during the incident, and while that driver managed to exit his cab in time, sadly, our contractor was trapped inside.



To see video : scan QR code or access via [URL Link](#) QR code / URL is only accessible to people with a valid CEMEX Microsoft 365 account.



KEY FINDINGS

- After reconstructing the incident, it was concluded that the third-party truck was travelling at a low speed (approx. 20 km/h) in the overtaking lane and the contractor, who travelling at a higher speed (63 km/h), misjudged the required safety distance when he tried to pass.
- The section of road where the rear-end collision occurred was straight with good visibility. It is concluded that a micro sleep or some distraction may have influenced the late maneuver.
- The delivery need was not part of the usual supply requirements and had been arranged to provide support between two company plants. This resulted in a different route to the norm being used and other process controls not being followed.

MANAGERS – KEY POINTS TO CHECK

- All vehicles and drivers are approved to make sure they meet the Health and Safety requirements. In situations where more than one team arranges deliveries and contractors, they are all aware of the controls to apply.
- Effective checks are made to review whether contractor companies have robust management practices in place for their fleet and drivers.
- Driver training records are included in driver assessments to make sure the training is relevant and up to date and you are aware of any relevant previous breaches in safety requirements.
- Working hours are monitored as part of a fatigue avoidance process.

ALL PERSONNEL – ACTION TO TAKE

- Never drive tired!** If you feel sleepy on the road, look for a safe place to stop and take a break.
- Always** remain aware of your surroundings while driving, avoiding any distractions that may reduce your ability to react to unexpected situations on the road.
- Always** adjust your speed according to the position of other vehicles, the road conditions and layout. Remember to use lower gears to help slow your vehicle.
- Always** overtake with caution, anticipating that other vehicles might be travelling slower, or faster, than they seem.
- Please remember, its very important for you to be safe on the road, and to always **follow the Driving Essentials– Your family is waiting for you at home!**



Fit & Alert



Keep a safe distance



Watch your speed



Remember