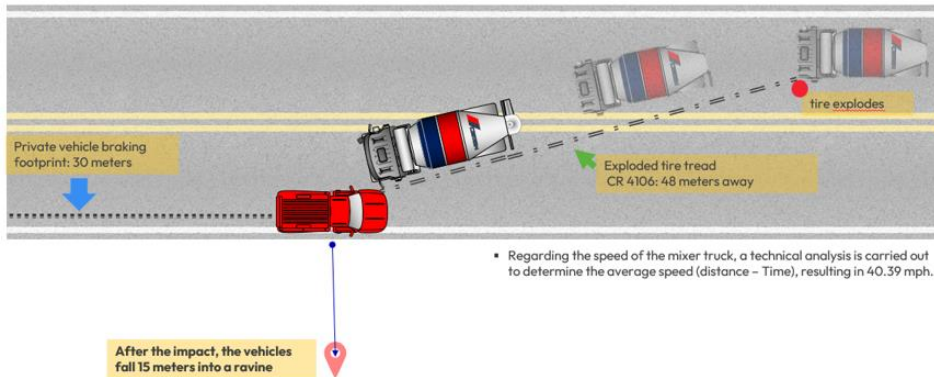


# GLOBAL SAFETY ALERT

## THIRD PARTY PICK-UP TRUCK DRIVER FATALLY INJURED

### INCIDENT DETAILS

A mixer truck operator was heading towards a customer's site when his front left tire exploded. This caused him to lose control of his vehicle and in doing so, it invaded the opposite lane and impacted a pick-up truck that was traveling in the opposite direction. Both vehicles then fell into a ravine, approximately fifteen meters deep.



### KEY FINDINGS

- The tire that exploded was operating with low air pressure, which had also been causing irregular tread wear, and it had a bulge on the inside wall that was generated by an impact prior to the incident. Both faults contributed to the explosion.
- Existing tire check processes, which had been carried out at various stages by internal and external personnel, had not identified the critical failures.
- The mixer truck was only used as back up to support the supply demand and it was established that the pre-start checklist was not being correctly and thoroughly applied by a number of different drivers that used the truck.

### MANAGERS – KEY POINTS TO CHECK

- Procedures have been defined to ensure the good condition of the tires, which includes periodic verification routines and clear acceptance and rejection criteria.
- Drivers are trained in how to thoroughly inspect tires, as well as the acceptance and rejection criteria, and the potential risks associated with faults.
- Appropriate tools are provided to drivers so that they can objectively verify variables such as tire inflation pressure and tread depth.
- Records are being kept of the history and useful life of the tires, and this information is available to the maintenance team.

### ALL PERSONNEL – ACTION TO TAKE

- **Always** check your vehicle before operation, making sure to use the provided checklist as a guide to ensure critical points are covered.
- Make sure you understand the criteria for passing or rejecting each vehicle element and which of them render them inoperative if they are defective.
- **Always** report faults on your vehicle using the pre-start check and defect reporting systems. Remember that making the right decision can save your life and the lives of others.
- **Always** follow the CEMEX Driving Essentials!



Safety Checks



Journey Planning



Remember