

# SAFETY ALERT

## ANKLE INJURY

UK SA06/2025 – 03.07.25

Display Until  
31.08.25



### INCIDENT DETAILS

While performing routine maintenance on a CEMEX vessel, a crew member was painting the turning gland support bracket of the dredge system. To access the work area, he stood on the hatch cover, as illustrated in the attached photo. (Fig 1) As he repositioned himself and took a small step back towards the center, his right foot lost traction on a hinge plate. This resulted in his foot sliding off the edge of the hatch cover and into the narrow gap between the hatch and the nearby support structure, the employee suffered a grazed shin and believed he had sprained his ankle, he was able to continue light duties the next day, however due to noticeable bruising the employee went to the medical Centre for a check up and was subsequently diagnosed with a small fracture to the bone in his right ankle, thankfully the employee has made a full recovery

### KEY FINDINGS

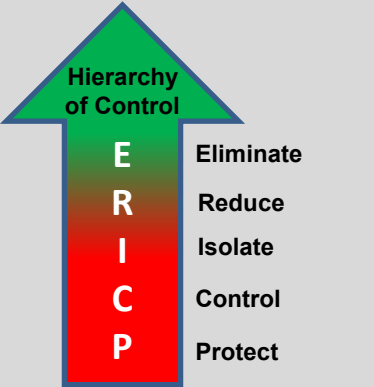
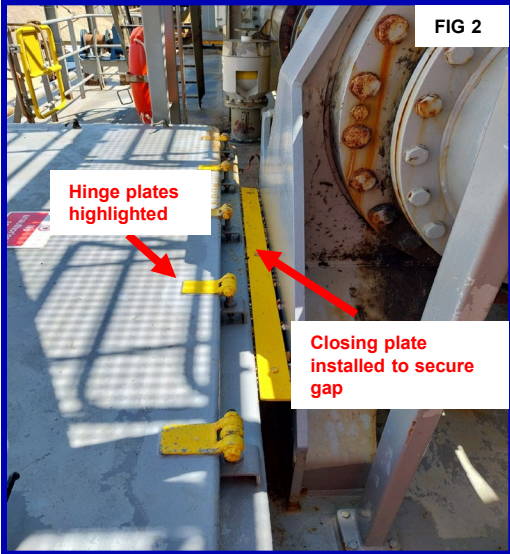
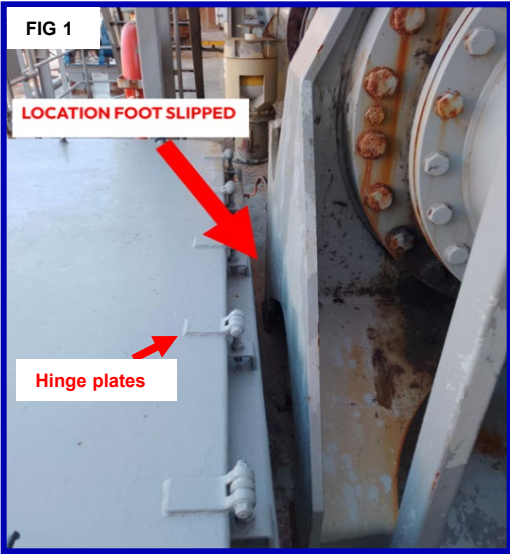
Take-5/Risk assessment	A pre-task risk assessment was performed before commencing the task.
Experience	The operator was competent and very experienced in his role
Workplace layout/Design	The workplace layout was inadequate for the task due to the presence of potential tripping hazards near a gap, increasing the risk of losing footing.

### HOW COULD THIS HAVE BEEN AVOIDED

- Comprehensive review of the workplace layout prior to the task, ensuring all potential risks are identified. Note: Corrective actions have been implemented to prevent reoccurrence (Fig 2)

### KEY REVIEW POINTS

- Assess work areas and perform effective workplace inspections to identify any risks or hazards.
- Do risk assessments and operating procedures consider the potential of slips, trips, and falls?
- Ensure that all elevated areas used for access are fitted with adequate edge protection, consider toe boards or guardrails, wherever practical



**Look after yourself and each other**

Don't let anyone act unsafely, always stop unsafe practices.

**Tools and Equipment**

Use the right, well maintained, tools/equipment for the job. Never make do.

**Safe Systems**

Follow safe systems of work, site rules, signage and traffic signals.

