



Welcome to UK NEWS



Your bi-weekly update from
around Cemex UK
14th August 2025



www.cemexuknews.co.uk

Follow **Cemex UK** on LinkedIn

Health & Safety

Latest Safety Alert – Mobile Phone Use



The latest Safety Alert relates to our Cemex Spain operations but is relevant to every country in which we operate.

You can read this latest Safety Alert at the end of this document, and on the UK News download page [HERE](#).

It is extremely fortunate that the injuries were not more serious in this incident. It provides a very clear reminder about the dangers of distracted driving, and the need to be fully concentrated on the road. Also, the Cemex Global Standard for Mobile Phone Use can be used as part of discussions with your team(s). You can also find this at the end of this document, and on the UK News download page [HERE](#).

📌 Managers, please review and discuss with your team(s) and display on relevant noticeboards.

Health and Safety information and resources can be found on the SharePoint:

🔗 <https://cemex.sharepoint.com/sites/UKHealthandSafety/SitePages/Safety-Alerts.aspx?web=1>

MPA Launches 2026 Health & Safety Awards

A message from Lex Russell, Chair of the UK Health & Safety Committee

The MPA have launched their 2026 Health and Safety Awards and are now calling for entries. This year the MPA have announced the launch of a new award for the Outstanding Contractor working within the mineral products industry.



The key philosophy behind the MPA Health & Safety Awards is that we are all 'Safer by Sharing'. By actively participating you will be helping to prevent injuries and fatalities within the mineral products industry. Please watch the short video below by clicking on the link. It highlights the benefits for our employees, our organisation, our stakeholders and others working within the mineral products industry, by submitting entries to the MPA Health & Safety Awards.

📺 Please watch this [video](#) to find out more.

Over the years, the Awards have played a pivotal role in preventing serious injuries and fatalities within the mineral products industry and enable the industry to learn about and share the innovations and good practice that improve health, safety, and wellbeing in the workplace. Many of the entries highlighted in the Awards from previous years have now been widely adopted across the mineral products industry and shared via [the Sharing Good Practice guides](#).

For the attention of All General Managers and Operational Managers

It would be great if you can all please encourage entries from your teams*, in any of the topics listed below, and for Individual and Young Leader Recognition (Under 30). The Awards are a great opportunity to share good practices across Cemex UK and the wider industry, to recognise the efforts of our teams and, most importantly, to help keep everyone safe.

*Please note, submissions must be made by Managers.

Award Topics:

- The 7 Health & Safety Topic Awards
 - Safer production
 - Safer maintenance and housekeeping
 - Safer management of pedestrians and transport on-site
 - Safer transport and logistics
 - Safer operations at a contracting/laying asphalt, construction, or customer site
 - Safer through improvements in health and wellbeing
 - Safer together
- 'The Fatal 6' Award
- The Eurobitume Trophy
- The Outstanding Contractor Award (New for 2026)
- The Individual Recognition Awards
- The Young Leader Award (Under 30)
- The John Crabbe Trophy
- The Sir Frank Davies Award

The closing date for submissions is 17th October 2025 and should be emailed to entries@mpahsawards.org. A briefing note and the entry forms are available via the following link:

https://www.safequarry.com/home/best-practice-awards/ent.aspx?dm_t=0,0,0,0,0

The Health and Safety team are available to provide guidance on possible Award entries and submissions as necessary.

We have a proud history of supporting the Awards with significant numbers of entries and Awards received in the past. There is no limit to the number of entries so you are all encouraged to showcase the great initiatives that we are continually developing and implementing. Be proud, blow your own trumpet and share your initiatives with the industry. We look forward to continuing our long history of success in these prestigious awards.

Risk Assessments – keeping us all safe

Hazard Identification and Risk Assessment is a key part of our Health and Safety Management System (HSMS). This process helps us spot potential hazards and figure out how likely and serious the risks are before they turn into incidents.

Element 2 of our Cemex Health and Safety Management System (HSMS) contains full details (click here to access: [HSMS](#)). Please familiarise yourself with it but contact your local Health & Safety specialist for further advice and guidance if it's needed.

✂ Please print and display the Risk Assessment poster on your Health & Safety notice boards. You can find it at the end of this document and on the UK News download page: www.cemexuknews.co.uk/downloads



What is a Risk Assessment?

A **risk assessment** is a simple but vital process we use to keep people safe at work. It involves looking at a job, task, or work area, identifying what could cause harm, and deciding what we need to do to control it. It's not just paperwork — it's about preventing injuries, protecting health, and making sure we all go home safe.

Hazard vs. Risk

It's important to understand the difference:

Hazard

Something with the potential to cause harm (e.g., moving machinery, working at height, chemicals).

Risk

The chance that the hazard will cause harm, and how serious the outcome could be.

Example:

Hazard: A wet floor.

Risk: Someone slipping, falling, and breaking a bone.

Benefits of Effective Risk Management:

When we manage risks well we can spot potential problems early and deal with them before they become big issues. This helps keep everyone safe and the business running smoothly. The benefits include:

- **Injury and Incident Prevention:** By spotting hazards early we can put measures in place to stop incidents before they happen. So everyone goes home safely.
- **Improved Morale and Engagement:** A safe workplace builds trust and confidence among everyone. When people see that their safety is a priority, they're more likely to be engaged and productive.
- **Enhanced Operational Efficiency:** Knowing the risks helps us plan better and use resources more effectively. This streamlines processes, cuts down on waste, and boosts overall efficiency.
- **Continuous Improvement:** Risk assessment isn't a one-time thing—it's an ongoing process. Regular assessments help us adapt to changes in operations, technology, and workforce dynamics.
- **Legal and Regulatory Compliance:** Conducting and regularly reviewing risk assessments ensures we comply with health and safety laws. This helps us avoid fines, legal issues, and damage to our reputation.
- **Cost Reduction:** Preventing incidents saves money on medical expenses, insurance premiums, compensation claims, and equipment damage. It also reduces productivity losses due to absenteeism or operational disruptions.

How to Carry Out a Risk Assessment

A workplace risk assessment is a systematic process used to identify hazards, evaluate risks, and implement measures to control or eliminate them.

Key Steps:

1. Identify Hazards (something with the potential to cause harm)
2. Determine Who Might Be Harmed and How
3. Evaluate Risks (probability of harm occurring i.e. the chance of an injury)
4. Determine control measures by applying the Hierarchy of Control - ERICP
5. Record Findings and Implement Measures
6. Review and Update Regularly

Make sure to share the relevant findings from risk assessments with everyone who needs to know. Remember, risk assessments should be reviewed regularly, at least once a year, and whenever there are changes like new staff, new equipment, or new processes etc.

When We Do Risk Assessments

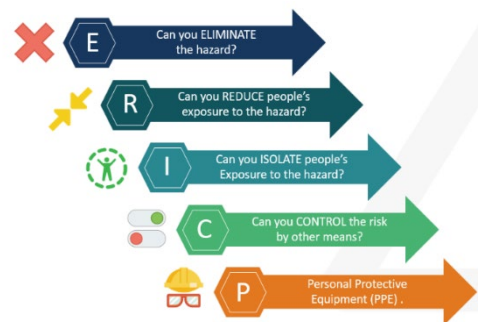
Risk assessments are carried out for:

- **Activities** (e.g., lifting operations, maintenance work)
- **Tasks** (e.g., grinding, welding, loading materials)

- **Specific job roles** (e.g., forklift operators, cleaners, maintenance staff)

Hierarchy of Control:

1. **Elimination (E):** This is the most effective method. It involves completely removing the hazard from the workplace. For example, if a machine is dangerous, eliminating it means getting rid of the machine altogether.
2. **Reduction (R):** This step involves reducing people's exposure to the hazard. This could mean limiting the amount of time workers spend near the hazard or reducing the number of people who come into contact with it.
3. **Isolation (I):** This involves isolating people from the hazard. For instance, placing a barrier between the hazard and the workers or using remote controls to operate machinery from a safe distance.
4. **Control (C):** This step involves implementing other control measures to reduce the risk. This could include using safety guards on machinery, implementing safety procedures, or providing training to workers.
5. **Personal Protective Equipment (PPE) (P):** This is the least effective method and should be used as a last resort. It involves providing workers with personal protective equipment like gloves, masks, or helmets to protect them from the hazard.



By following this hierarchy workplaces can effectively manage hazards and ensure the safety of their employees.

Take 5



Our Take 5 process is here to help you make sure everything's safe before you start a task. It's a quick personal check that only takes a few minutes but can prevent injuries.

Take 5 is your personal **pre-task check** before starting work:

- Stop, look around, and think about hazards in that moment.
- Take 5 does **not** replace the formal risk assessment — it complements it.

Make it a habit!

Profitability

New Inshore Dredger Secures Further Mineral Reserves

Cemex UK has recently invested in a new inshore dredger at our West Heath quarry lake, securing four additional years of mineral reserves and opening up extensions that will support quarrying for another ten years in the future.

The new inshore dredger, imported from the Netherlands, features technology similar to what's used in Cemex Marine's vessels fleet. Before its launch, existing operators participated in supplier-led training to ensure they were ready to use the new equipment.

The cutter suction dredger allows minerals to be extracted from beneath the lake at depths that conventional excavation can't reach. Situated in the South



Downs National Park, West Heath quarry operates under strict license rules, with restrictions on dewatering and strict management requirements for nearby heath and wetlands. With the introduction of the dredger, quarry operations can continue without compromising the site's valuable wildlife habitats.

Despite being smaller than those in the marine fleet, the new dredger can extract minerals from depths of up to 17 metres within a compact area, supplying over 100 tonnes of high-quality silica sand per hour. This is pumped as a slurry back to shore for dewatering.

West Heath is one of the few remaining operational quarries in the South Downs National Park. According to Area Operations Manager, Wayne Strevens: "The new dredger represents a significant investment for West Heath. The on-site team has embraced this innovative approach and demonstrated strong ownership throughout the project and has made us think about novel ways of extracting mineral deposits in the future."

The installation of the dredger and all necessary infrastructure was made possible by close collaboration between Operations, Engineering, Land Development, Procurement, IT, and Marine teams. Thanks to this fantastic teamwork, the project finished without disruption to production, with zero safety incidents, delivering benefits to shareholders, customers, and the local environment, while maintaining Cemex's highest safety standards.

Congratulations to everyone involved for delivering this fantastic asset to our UK operations.

Rotherham Plant Expands



We are pleased to share a significant development at our Rotherham plant in South Yorkshire!

The plant has been transformed from a mortar plant into a state-of-the-art screed and concrete production centre. This upgrade enables Cemex UK to offer premium screed and concrete solutions to businesses and projects throughout the Yorkshire region.

Our investment in cutting-edge technology and processes guarantees that our concrete

products meet the highest standards of quality and sustainability. Our concrete plants now cover most of Yorkshire, and additionally, our Castleford facility is fully equipped to supply screed and mortar, ensuring comprehensive coverage across the region. Whether our customers are embarking on a new residential build, a commercial venture, or any project requiring reliable screed and concrete, we are well-positioned to support their needs.



A Proud Farewell to Denge Quarry

After over 40 years of operation, Cemex UK's Denge quarry officially closed on 31st July 2025, marking the end of an extraordinary journey that began with a planning application in the 1970s. Since the 1980s the site has supplied over 6 million tonnes of high-quality material for major projects including the Channel Tunnel, sea defences along the south coast, and our readymix plants across the south east.

A Brief History

Denge quarry's journey began in the 1970s with a planning application, followed by ground preparation in 1980 and the plant built in 1983. During its operational years, the site has been led by four Quarry Managers and five Assistant Quarry Managers, each contributing to its legacy. The quarry sold over 6 million tonnes of high-quality stone, contributing to numerous projects including Readymix plants in the South East, the Channel Tunnel, Cemex's Thorpe Head Office roof gardens, plus sea defences at Eastbourne, Jurys Gap Camber, and Littlestone in Kent.



Over the years, the site had seven trucks based on site during the construction of the Channel Tunnel, with nine members of staff working over two miles of field conveyor feeding the processing plant. The quarry also had two loading shovels and one RB71 dragline. When the dragline operation finished, the team transitioned to using a hydraulic long-reach excavator to extract material. In the last five years of operation, they worked on the water with an excavator on a pontoon.

Remarkable Discoveries

The quarry has also been a site of significant discoveries. In 2022, a 16th-century cargo ship was unearthed, and human remains found in the 1980s are now housed in the local Lydd Museum.

Safety Achievements

One of the most commendable achievements of Denge quarry is its impressive safety record. The site maintained a continuous 27 years of Lost Time Injury (LTI) until it's close in the final week of July. This is a testament to the dedication and commitment of the current and past teams who have worked at the quarry.

Looking Ahead

As the site has been restored, it will be handed over to the RSPB later this year. This marks a new chapter for the area, and we are proud of the contributions Denge quarry has made to various projects and the community.

A heartfelt thank you to everyone who played a part in its extraordinary journey.

Lend A Hand' Helps Keep Twyford and Compton Lock Litter Free

Earlier this month a team from our UK Marine business rolled up their sleeves for a 'Lend a Hand' volunteering litter pick in the scenic villages of Twyford and Compton Lock.

Joined by Cllr Susan Cook (Ward Councillor for Colden Common & Twyford, Winchester City Council), the group collected rubbish from local streets, footpaths, and the surrounding countryside, including the picturesque Compton Lock, a stretch of the River Itchen designated both as a Site of Special Scientific Interest (SSSI) and a Special Area of Conservation (SAC) for its rich biodiversity and floodplain meadows.



The day was inspired by Marine's Susie Taylor – she shared: “As a member of the Hampshire and Isle of Wight Wildlife Trust, I've always enjoyed getting out into the countryside and wanted to support a local area of natural beauty, used and enjoyed by the wider public. We got in touch with the H&IOW Trust who in turn then directed us to Tom Bristowe at the Litter Partnership and Cllr Susan Cook. We are grateful for their time and enthusiasm which enabled us to set up the day.”

Cllr Cook was full of praise for the effort:

“We were blessed with wonderful weather and I'm so glad the company took this challenge on. What the team achieved today was amazing.”

The volunteers ensured all collected waste was disposed of responsibly. The cans were donated to the Air Ambulance Yellow Bin in Colden Common, plastics went to the appropriate recycling streams and remaining rubbish was placed in suitable waste bins.

Marine team members taking part included: Will Bridge, Mark Hampton, Mark Williams, Sam Ringwood, Alex Peacock, Susie Taylor, Joseph Holcroft and Rebecca Rickaby.

Well done everyone, we hope you all enjoyed your day.

EMEA Photography Competition

Our third Wildlife Photography Competition is open to all EMEA employees.

Cemex actively protects and nurtures biodiversity at all sites through careful environmental management and education.

Our photography competition is to celebrate diversity of wildlife at our sites, since every organism is part of an ecosystem which needs protection for a richer, stable and resilient environment as we progress towards being Nature Positive by 2030.

We invite you to capture this diverse world in photographs and participate in the Nature Photography Competition, which we are organising for the third time in 2025.

Please send your photos with descriptions via email to sean.cassidy@cemex.com. Please include your contact details in the email body.

An independent panel will judge the entries, and the best photographs will be awarded prizes. We also look forward to showcasing them on our communication channels, promoting the diverse natural world at our facilities. For more details, you can also reach out to your local Sustainability team. All photos submitted are likely to be used in our internal and external communications channels.

The winners will receive “Nature books” from the El Carmen reserve in Mexico, which is celebrating its 25th anniversary this year.

Competition is open until 5th September 2025.



Staying Safe While Working Outside

With the heat continuing this week and next, it's important to remember the importance of Sun Safety if you work out doors.

Stay protected from the sun, particularly between 11am and 3pm.
Did you know – the sun's UV rays are strongest when your shadow is shorter than you!

Too much ultraviolet (UV) radiation from the sun or sunbeds can damage DNA in your skin cells and cause skin cancer. In the UK almost nine in ten cases of melanoma skin cancer could be prevented by staying safe in the sun and avoiding sunbeds.

The best way to stay safe in the sun and protect your skin is to use shade, clothing and sunscreen. Shade and clothing are better than sunscreen at protecting your skin.

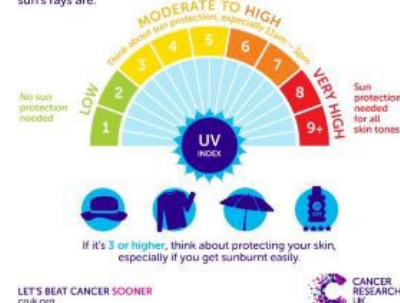
Sunscreen shouldn't be used to spend longer in the sun but can be useful for protecting the parts of skin not covered by clothing or shade.

Here are some Sun Safety tips:

- Spending time in the shade, especially between 11am and 3pm in the UK.
- Covering up with clothes, a wide-brimmed hat and UV protection sunglasses.
- And using a sunscreen with at least SPF30. Use it generously, reapply regularly and use together with shade.
- Stay hydrated and take regular breaks.

DON'T LET SUNBURN CATCH YOU OUT

Check the UV index at www.metoffice.gov.uk/uv to see how strong the sun's rays are.



Data Retention Policy – Action Required!

Further to the email you should have received from José Antonio Cabrera regarding the Global Data Retention Policy, here's a quick reminder to start tagging your emails according to Cemex's Global Data Retention Policy!

Starting 2nd February 2026, emails 180 days and older that were not tagged will be automatically deleted.

Starting on February 2nd, 2026, untagged emails will be automatically deleted.

- | | |
|---|---|
|  Retention Tags should only be applied to required emails in accordance with the Policy. |  Untagged emails will be automatically deleted 180 days after the email's creation date. |
|  Once the Retention Tag period expires, the emails that were tagged will be automatically deleted. |  If you wish to retain the email's content, we recommend converting it to PDF and saving it in your OneDrive or Teams. |

Please make sure that if you need to retain certain emails you need to assign the corresponding 5 or 10-year retention tag based on operational and legal requirements before 2nd February 2026. You need to continuously tag relevant emails to retain them.

If you don't need to retain any emails, no further action is required. Compliance with this Policy is **mandatory** for all employees.

Consult the "[Quick Guides](#)" and the "[Data Retention Pathway](#)" for guidance.

Any questions? Please contact the [GSC](#).

Have You Tried the Discounts App?



The Discounts app is a mobile app that allows Cemex employees to purchase discounted eVouchers and film eCodes while on the go, to instantly use in-store and online.

Available as a free download on App Store for iPhone and on Google Play, simply search 'Pluxee UK Discounts' to get your app.

Find out more [HERE](#):

Our Employee Assistance Programme

Did you know that Cemex offers all employees a free, confidential employee assistance programme called Lifestyle Support?

You can find a guide all about How Care first can support you in the UK News website: [here](#)

Lifestyle Support is easy to access, available 24/7 and can provide help and support with a wide range of issues or concerns such as family matters, debt, relationships, bereavement, depression and anxiety.

It is run by a separate provider and not part of Cemex and Cemex does not receive any employee specific information from them.

Contact the Employee Assistance Line (Lifestyle Support) for confidential advice and support – call 0808 168 2143 or visit www.lifestyle-support.co.uk (Username: cemex Password: cemex).

Do you need support? Care first

Cemex offers all employees a free, confidential employee assistance programme (EAP) called Lifestyle Support, operated by Care first.

Lifestyle Support is easy to access, available 24/7 and can provide help and support with a wide range of issues or concerns such as family matters, debt, relationships, bereavement, depression and anxiety.

It is run by a separate provider and not part of Cemex – we don't receive any employee specific information from them.



Call 0808 168 2143

Visit www.lifestyle-support.co.uk

Username: cemex
Password: cemex



Internal Vacancies

IVC Ref	Position	Company	Location	Closing date
98-08-2025	Multiskilled Operative (Primary Back Shift)	Materials - Aggregates	Dove Holes Quarry	18/08/2025
99-08-2025	Operative	Urbanisation Solutions – Building Products	Rochester	19/08/2025
100-08-2025	Driver - Mixer	Materials - Readymix	Peterlee	20/08/2025
101-08-2025	Quarry Manager	Materials - Aggregates	Hatfield Quarry	20/08/2025
102-08-2025	Quarry Manager	Materials - Aggregates	Raynes Quarry	20/08/2025
103-08-2025	Maintainer/ Operator	Cement Operations	Rugby Cement Plant	21/08/2025
104-08-2025	Plant Manager	Materials - Readymix	York	27/08/2025

105-08-2025	Technical Manager	Materials - Technical	London	27/08/2025
106-08-2025	Operative	Materials - Asphalt	Halkyn Quarry	27/08/2025
107-08-2025	Sales Executive	Materials - Readymix	Cheshire	27/08/2025

We would love to hear from you for the next edition

To send us a story: either click on 'submit a story' on the UK News website or email gb-communicationsandpublicaffairs@cemex.com

If you can, please include a photo too, Thank you.

SAFETY ALERT

HIPO-CEMENT TRANSPORT-FLATBED TRUCK

Display Until
XX.XX.XX



DETAILS OF THE INCIDENT

A contracted flatbed truck that was transporting cement bags to a customer site unexpectedly encountered a traffic jam, but the driver failed to reduce speed in time and, to avoid a collision, made a sharp turn. This maneuver led to an impact with the last vehicle in a line of stationary traffic. Due to the sudden swerve, two of the four pallets stacked on the truck fell onto another vehicle. At the time of the incident, the truck driver was in a conversation using the vehicle's integrated speaker system. The incident involved three individuals traveling in the affected vehicles, one of whom sustained a contusion and an arm injury. The truck driver was unharmed.

KEY FINDINGS

✓	The contractor driver has more than 10 years of experience at Cemex, had received the safety induction and was approved as a contractor.
✓	The truck was stowed correctly and the pallets that were mounted were secured with slings.
✓	The driver scored medium-high in his driving assessment (Movertis).
✓	Police conducted alcohol and drug tests on the driver, which came back negative.
✓	The truck was traveling at a speed of 66 km/hour in a section where the maximum speed is 90 km/hour.
✗	The driver received a professional call that lasted approx. 7 minutes, a colleague asking for directions to a new delivery destination.
✗	The driver was distracted due to the call and did not detect that he was approaching a traffic jam, which did not give him time to brake.
✗	The driver lost four points on his driving licence and received a fine for not respecting the safety distance from the vehicle in front.
✗	The driver had received a previous warning during a VFL for driving at an inappropriate speed inside the plant.

HOW COULD THIS HAVE BEEN AVOIDED

- Being fully concentrated on the road and not being distracted
- Not using mobile phone while driving, only allowing to attend to urgent and short-term calls. The rest will be attended to when the vehicle is stopped.
- Plan the route to your destination before making any trip.

KEY REVIEW POINTS

- Drivers should avoid taking long calls while driving, even when using mobile integrated systems. If the call is not urgent, the driver must indicate that is "driving" or "call back later".
- Maintain full attention when driving any vehicle, especially when traveling on busy roads where traffic jams are frequent and you must react quickly.
- Drivers are aware of the Global Standard for Mobile Phone Use While Driving



Hierarchy of Control

E Eliminate
R Reduce
I Isolate
C Control
P Protect

Journey Planning
Assess the risks and plan your journey to use the safest route.

Mobile Phone
Use of a hand-held mobile phone whilst driving is prohibited.

Keep a Safe Distance
Leave enough space between you and the vehicle in front so you can stop safely.

STOP THINK ACT

Mobile Phone Use While Driving

Global Standard – Minimum Requirements

As a first principle, all drivers must avoid phone use while driving unless it is absolutely necessary. In situations when there is an absolute need to use the phone while driving, the following are the minimum conditions that must be followed:

1. A Hands Free device must be used. It shall be correctly mounted in a safe place or consist of an integrated vehicle system. Head/earphones are not permitted, but a secure single ear blue tooth device is allowed.
2. Only use when driving in non congested conditions and when safe to do so after assessing and continuing to assess the overall situation, which includes other traffic, pedestrians, visibility and the weather/elements at the time - an example of when the phone must not be used is when in the area of a school
3. All conversations must be kept to a minimum. If a conversation is unlikely to be short, the caller must be told they will be contacted as soon as the driver has found a safe place to park
4. When out going calls are permitted, the driver can only initiate the call via voice activation or an integrated vehicle system which allows the driver to keep their hands on the steering wheel and their eyes on the road
5. Texting, emailing and any other hands-on use of mobile devices are banned
6. If the phone or another device is used for satellite navigation purposes, it must be mounted in a fixed device where it can be easily seen while keeping a good view of the road, it must not obstruct the driver's view and cannot be held in the hand. It is not allowed to manipulate the device while driving.

Anyone phoning a mobile phone, must first ask the person if it is safe to take the call.

Additional Requirements

- Each country will raise awareness with drivers, about the risks associated with mobile phone use, through training courses and communication campaigns
- Each country must identify ongoing opportunities to significantly reduce the amount of occasions and time people need to use the phone while driving

Risk Assessments

Keeping everyone safe



Hazard Identification and Risk Assessment is a key part of our Health and Safety Management System (HSMS). It helps us identify potential hazards, how likely and serious the risks are, and how to control them.

Element 2 of our Cemex HSMS contains full details (click here: [HSMS](#)). Please familiarise yourself with it, but contact your local H&S specialist for further advice and guidance if required.

WHAT IS A RISK ASSESSMENT?



- A simple but vital process to identify what could cause harm and decide how to control it.
- Prevents injuries, protects health, and ensures we all go home safe.

HAZARD VS. RISK



Hazard

Something with potential to cause harm (e.g., moving machinery, wet floors).

Risk

The likelihood and severity of harm occurring.

Examples:

Hazard – Wet floor.

Risk – Someone slipping and breaking a bone.

BENEFITS OF RISK ASSESSMENT



- Prevents injuries and incidents
- Builds trust and morale
- Improves efficiency
- Drives continuous improvement
- Ensures legal compliance
- Saves costs and resources

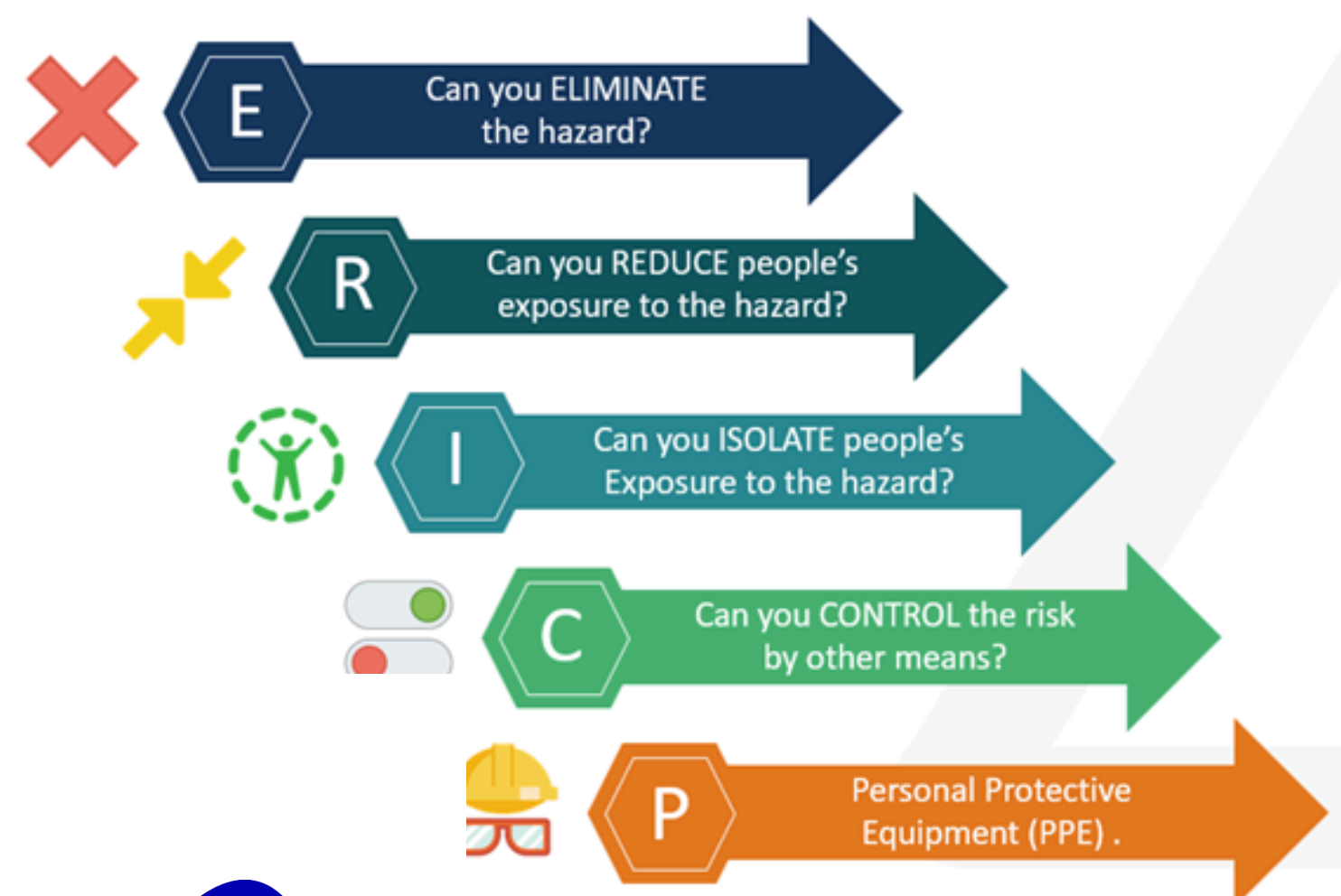
HOW TO DO A RISK ASSESSMENT

- 1 Identify hazards (has the potential to cause harm)
- 2 Decide who might be harmed & how
- 3 Evaluate the risk level (probability of harm occurring)
- 4 Apply the Hierarchy of Control (ERICP)
- 5 Record findings and implement measures
- 6 Review and Update Regularly

When We Do Risk Assessments?

They are carried out for Activities (e.g. lifting/maintenance), Tasks (e.g. grinding/welding), Specific job roles (e.g. forklift operators, cleaners)

HIERARCHY OF CONTROL (ERICP)



TAKE 5



Take 5 is your personal pre-task check before starting work:

WHAT IS TAKE 5 ?

1. Stop, Look, Walk Around



2. Think Through the Task

3. Identify Hazards



4. Control Risks

5. Do the Task Safely



- Stop, look around, and think about hazards in that moment.
- Take 5 does not replace the formal risk assessment – it complements it.

